

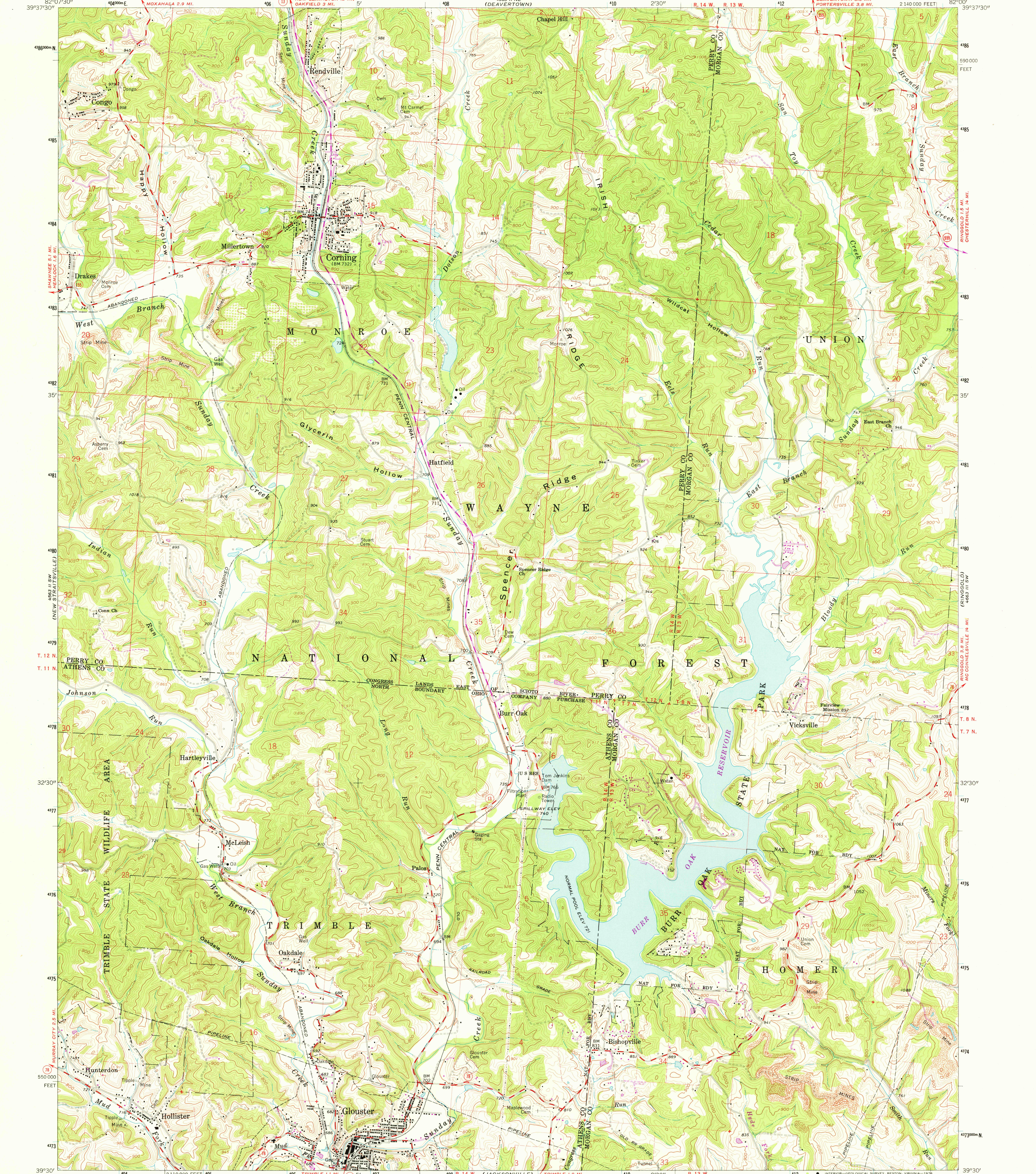
(NEW LEXINGTON)
4563 11 NE
(DEAVERTOWN)

UNITED STATES
DEPARTMENT OF THE INTERIOR
GEOLOGICAL SURVEY

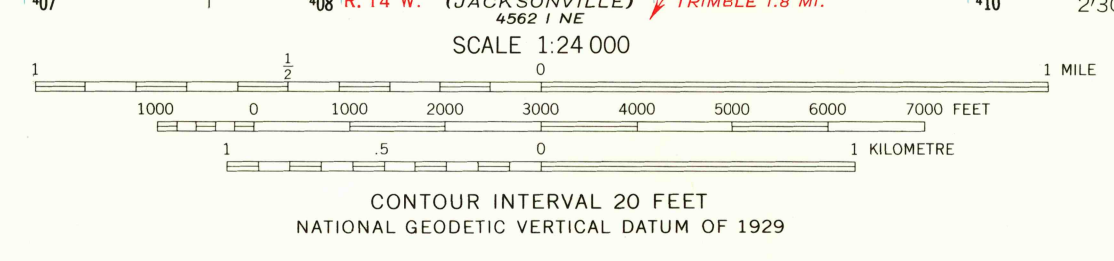
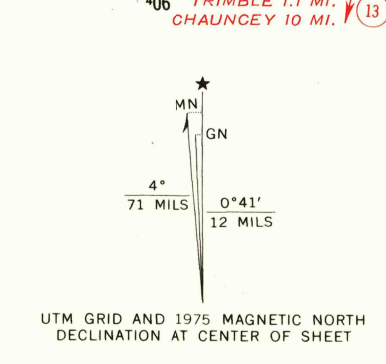
STATE OF OHIO
DEPARTMENT OF TRANSPORTATION
DEPARTMENT OF NATURAL RESOURCES
DIVISION OF GEOLOGICAL SURVEY

CORNING QUADRANGLE
OHIO
7.5 MINUTE SERIES (TOPOGRAPHIC)

4563 11 NW
(FOOTSBLOCK)



Mapped, edited, and published by the Geological Survey
Control by USGS and USCGS
Topography by photogrammetric methods from aerial
photographs taken 1960. Field checked 1961
Polyconic projection. 1927 North American datum
10,000-foot grid based on Ohio coordinate system, south zone
1000-meter Universal Transverse Mercator grid ticks,
zone 17, shown in blue
Fine red dashed lines indicate selected fence and field lines where
generally visible on aerial photographs. This information is unchecked
Unlabeled wells are oil wells
Land lines based on the Ohio River Base
Dotted land lines established by private subdivision
of the Ohio Company Purchase



ROAD CLASSIFICATION
Medium-duty ———— Light-duty ————
Unimproved dirt ————
State Route ————
CORNING, OHIO
N3930-W8200/7.5
USGS
Historical File
Topographic Division
1961
PHOTOREVISED 1975
AMS 4563 II SE - SERIES V852
MAY 03 1976

THIS MAP COMPLIES WITH NATIONAL MAP ACCURACY STANDARDS
FOR SALE BY U. S. GEOLOGICAL SURVEY, RESTON, VIRGINIA 22092
A FOLDER DESCRIBING TOPOGRAPHIC MAPS AND SYMBOLS IS AVAILABLE ON REQUEST

Revisions shown in purple compiled in cooperation with
State of Ohio agencies from aerial photographs taken
1975. This information not field checked