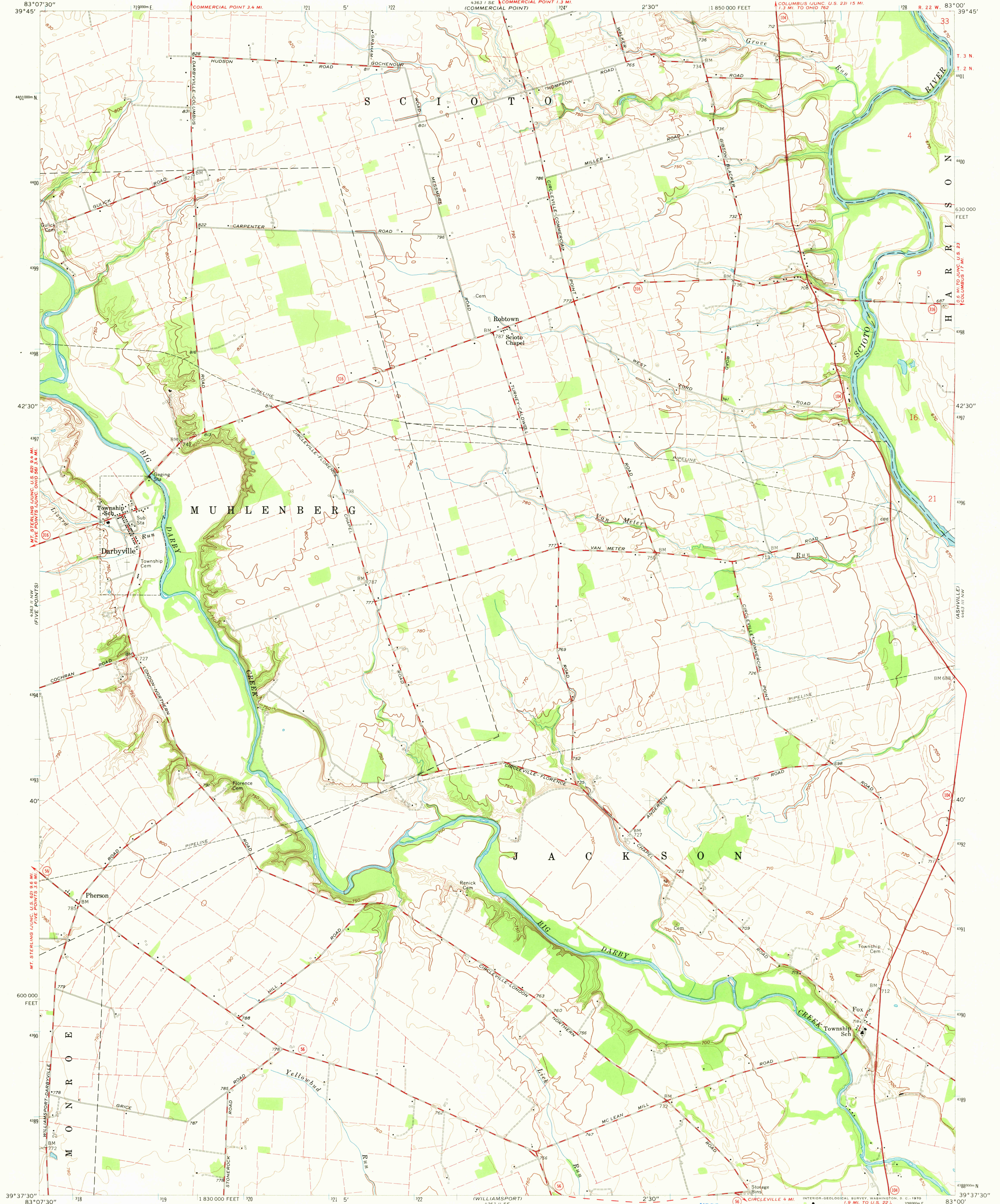
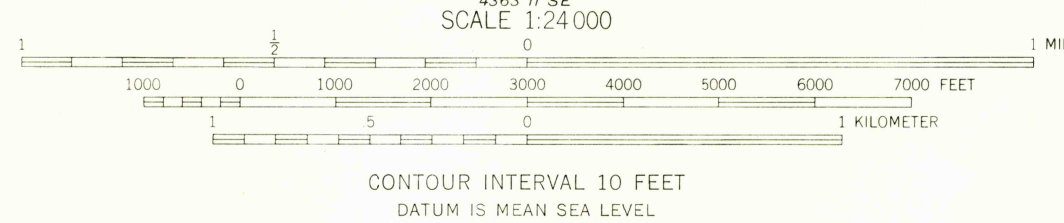
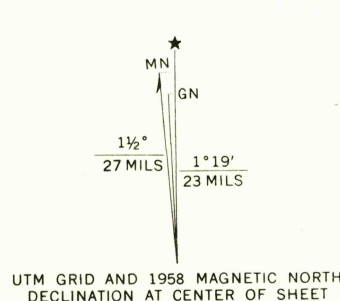


UNITED STATES  
DEPARTMENT OF THE INTERIOR  
GEOLOGICAL SURVEY

DARBYVILLE QUADRANGLE  
OHIO-PICKAWAY CO.  
7.5 MINUTE SERIES (TOPOGRAPHIC)  
NE/4 ERA 15' QUADRANGLE



Mapped, edited, and published by the Geological Survey  
Control by USGS and USC&GS  
Topography from aerial photographs by Kelsh plotter and by  
planetable surveys 1958. Aerial photographs taken 1955  
Polyconic projection. 1927 North American datum  
10,000-foot grid based on Ohio coordinate system, south zone  
1000-meter Universal Transverse Mercator grid ticks,  
zone 17, shown in blue  
Fine red dashed lines indicate selected fence and field lines  
visible on aerial photographs. This information is unchecked  
Area west of the Scioto River lies within the Virginia Military  
District. Land lines east of the Scioto River based on the  
Scioto River Base



USGS  
Historical File  
Topographic Division



ROAD CLASSIFICATION  
Heavy-duty ——— Light-duty ———  
Medium-duty ——— Unimproved dirt ———  
State Route ———  
U.S.G.S.  
FILE COPY  
TOPOGRAPHIC DIVISION  
DARBYVILLE, OHIO  
NE/4 ERA 15' QUADRANGLE  
N3937.5—W8300/7.5  
1958  
AMS 4363 II NE-SERIES V852

THIS MAP COMPLIES WITH NATIONAL MAP ACCURACY STANDARDS  
FOR SALE BY U. S. GEOLOGICAL SURVEY, WASHINGTON, D. C. 20242  
A FOLDER DESCRIBING TOPOGRAPHIC MAPS AND SYMBOLS IS AVAILABLE ON REQUEST

NOV 17 1959