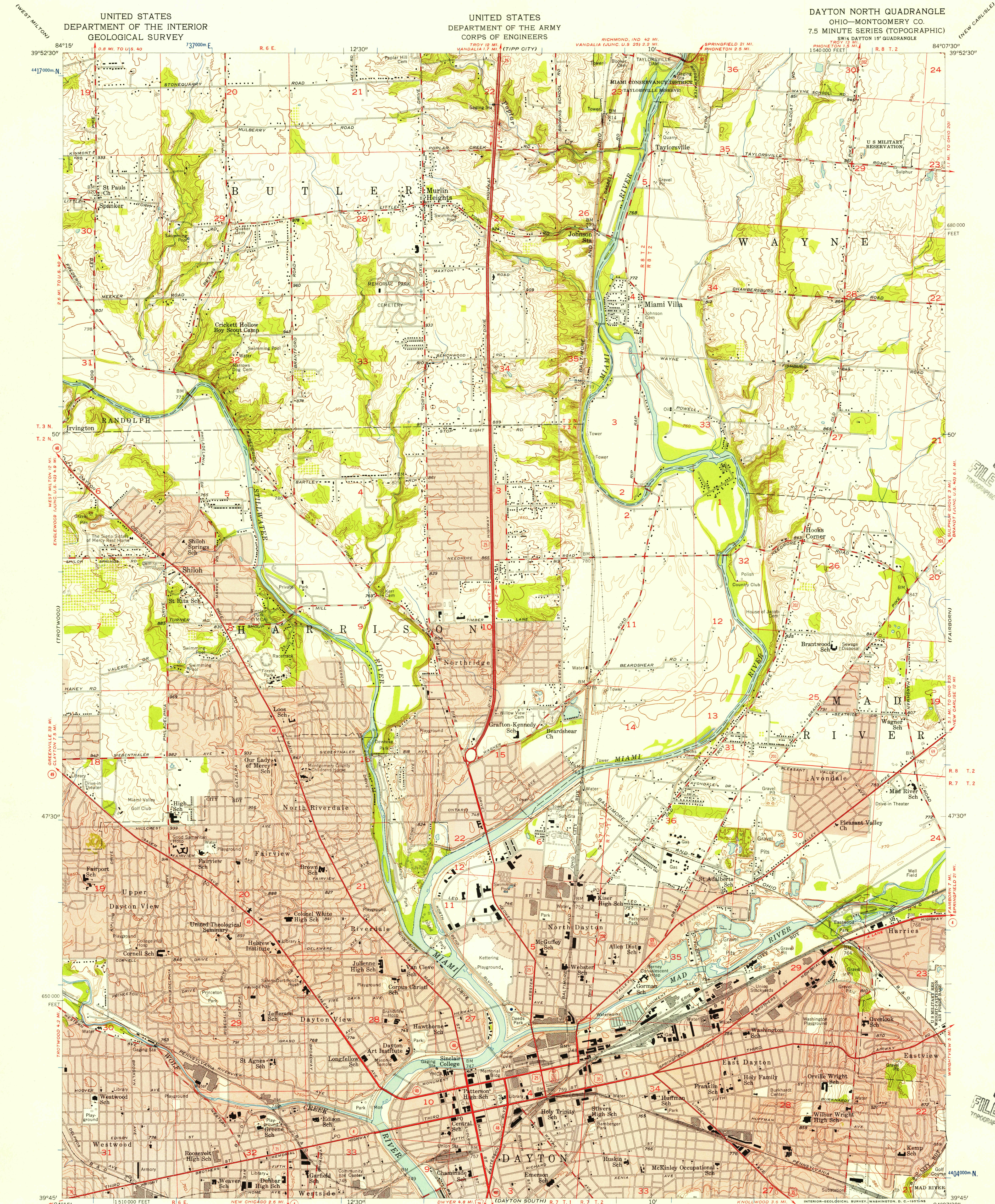


UNITED STATES
DEPARTMENT OF THE INTERIOR
GEOLOGICAL SURVEY

UNITED STATES
DEPARTMENT OF THE ARMY
CORPS OF ENGINEERS

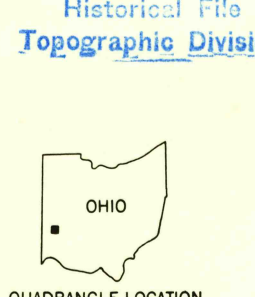
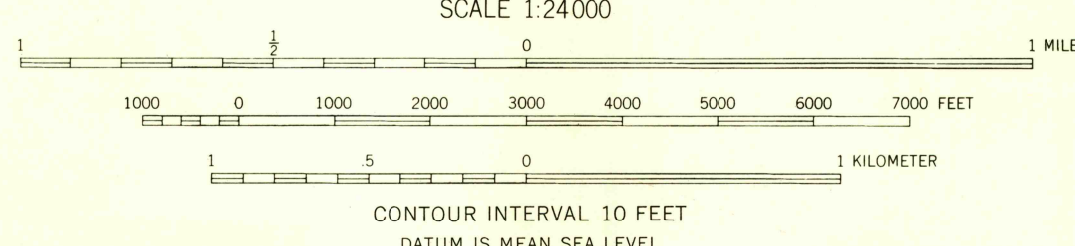
DAYTON NORTH QUADRANGLE
OHIO—MONTGOMERY CO.
7.5 MINUTE SERIES (TOPOGRAPHIC)
SW/4 DAYTON 15' QUADRANGLE



U.S.G.S.
FILE COPY
TOPOGRAPHIC DIVISION

U.S.G.S.
FILE COPY
TOPOGRAPHIC DIVISION

Mapped, edited, and published by the Geological Survey
Control by USGS, and USC&GS
Topography from aerial photographs by photogrammetric methods. Aerial photographs taken 1954. Field check 1955
Polyconic projection. 1927 North American datum
10,000-foot grid based on Ohio coordinate system, south zone
1000 meter Universal Transverse Mercator Grid ticks, zone 16, shown in blue
Red tint indicates areas in which only landmark buildings are shown
Area covered by dashed light-blue pattern is subject to controlled inundation to 818 feet
Land lines based on the Great Miami River Base



ROAD CLASSIFICATION
Heavy-duty ——— Light-duty ———
Medium-duty ——— Unimproved dirt ———
U. S. Route ——— State Route ———

DAYTON NORTH, OHIO
SW/4 DAYTON 15' QUADRANGLE
N 3945—W 8407.5/7.5

1955

FEB 13 1957

3300