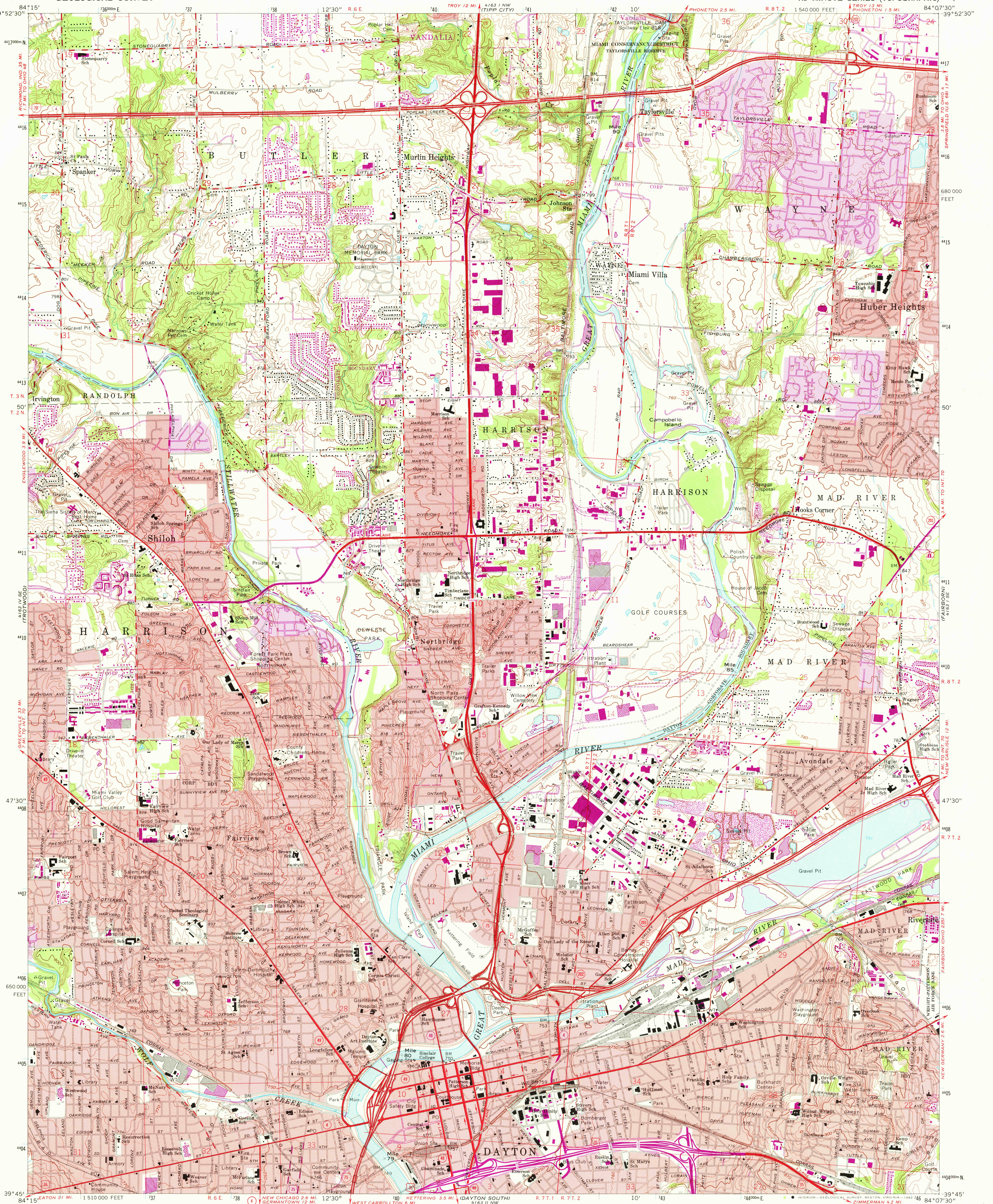


UNITED STATES
DEPARTMENT OF THE INTERIOR
GEOLOGICAL SURVEY

DAYTON NORTH QUADRANGLE
OHIO—MONTGOMERY CO.
7.5 MINUTE SERIES (TOPOGRAPHIC)



Maped, edited, and published by the Geological Survey
in cooperation with the Army Map Service.

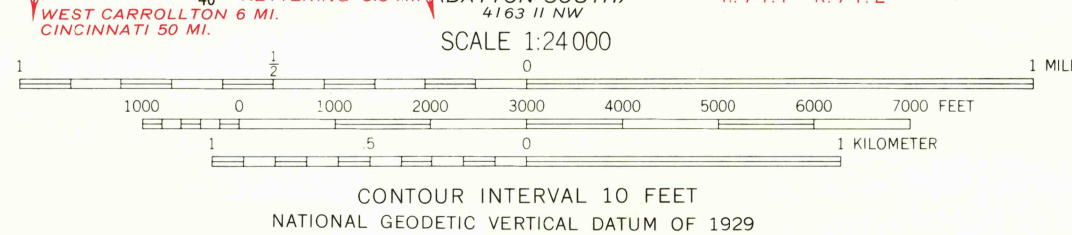
Revised in cooperation with State of Ohio agencies
Control by USGS and NOS/NOAA

Topography by photogrammetric methods from aerial photographs
taken 1954. Field checked 1955. Revised from aerial
photographs taken 1964. Field checked 1965.
Polyconic projection. 10,000-foot grid ticks based on Ohio coordinate
system, south zone. 1000-meter Universal Transverse Mercator
grid ticks, zone 16, shown in blue. 1927 North American Datum
To place on the predicted North American Datum 1983 move
the projection lines 2 meters south and 6 meters west as shown
by dashed corner ticks.

Red tint indicates areas in which only landmark buildings are shown
Area covered by dashed light-blue pattern is subject to controlled
inundation to 818 feet
Area west of the Great Miami River lies within the Miami River Survey
Area east of the Great Miami River lies within the Between the Miamis
Land lines based on the Great Miami River Base

There may be private inholdings within the boundaries of
the National or State reservations shown on this map

Revisions shown in purple and woodland compiled in
cooperation with State of Ohio agencies from aerial
photographs taken 1979 and other sources. This
information not field checked. Map edited 1981
Purple tint indicates extension of urban areas



THIS MAP COMPLIES WITH NATIONAL MAP ACCURACY STANDARDS
FOR SALE BY U. S. GEOLOGICAL SURVEY, RESTON, VIRGINIA 22092
A FOLDER DESCRIBING TOPOGRAPHIC MAPS AND SYMBOLS IS AVAILABLE ON REQUEST



ROAD CLASSIFICATION
Heavy-duty ————— Light-duty —————
Medium-duty ————— Unimproved dirt —————
Interstate Route U.S. Route State Route

DAYTON NORTH, OHIO
N3945—W8407.5/7.5
1965
PHOTOREVISED 1981
DMA 4163 1 SW—SERIES V852

OCT 25 1981

RETURN TO:
USGS AND HISTORICAL MAP ARCHIVE