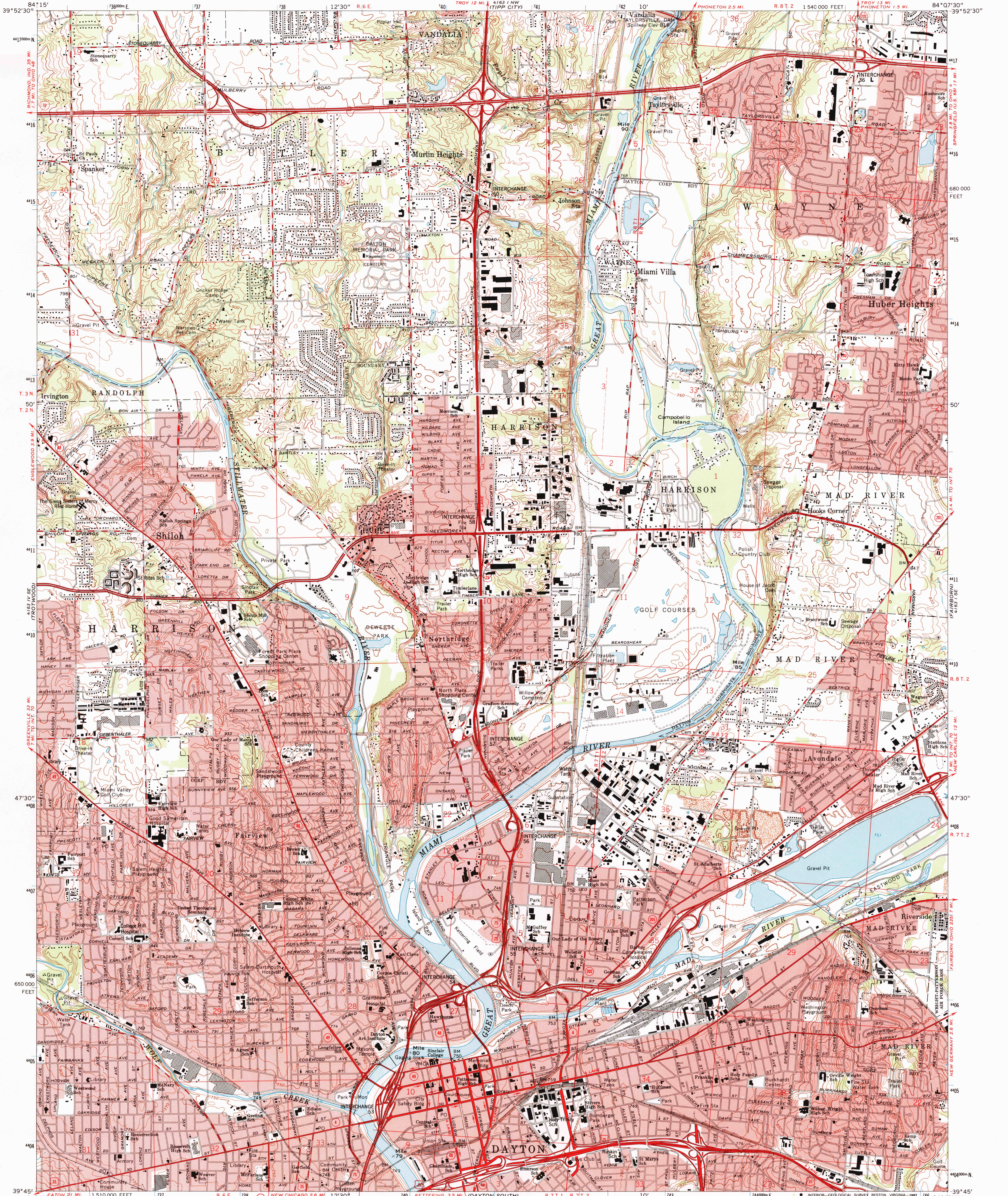


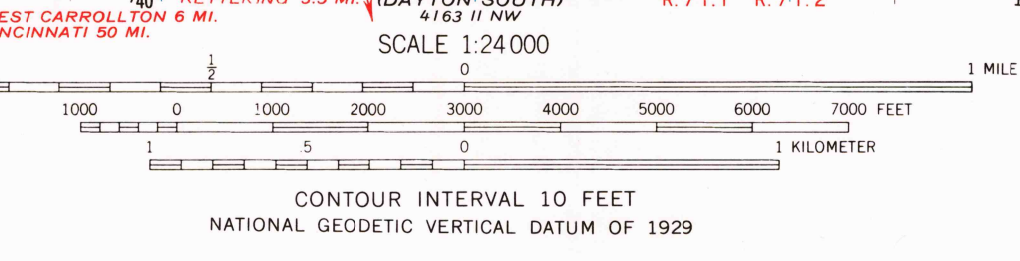
UNITED STATES
DEPARTMENT OF THE INTERIOR
GEOLOGICAL SURVEY

DAYTON NORTH QUADRANGLE
OHIO—MONTGOMERY CO.
7.5 MINUTE SERIES (TOPOGRAPHIC)



Maped, edited, and published by the Geological Survey
in cooperation with the Army Map Service
Revised in cooperation with State of Ohio agencies
Control by USGS and NOS/NOAA
Topography by photogrammetric methods from aerial photographs
taken 1954. Field checked 1955. Revised from aerial
photographs taken 1964. Field checked 1965.
Polyconic projection. 10,000-foot grid ticks based on Ohio coordinate
system, south zone. 1000-meter Universal Transverse Mercator
grid ticks, zone 16, shown in blue. 1927 North American Datum
The difference between 1927 North American Datum and North
American Datum of 1983 (NAD 83) for 7.5-minute intersections
is given in USGS Bulletin 1875. The NAD 83 is shown by
dashed corner ticks
Red tint indicates areas in which only landmark buildings are shown
Area covered by dashed light-blue pattern is subject to controlled
inundation to 818 feet
Area west of the Great Miami River lies within the Miami River Survey
Area east of the Great Miami River lies within the Between the Miamis
Land lines based on the Great Miami River Base

There may be private inholdings within the boundaries of
the National or State reservations shown on this map



Revisions compiled in cooperation with
State of Ohio agencies from aerial
photographs taken 1988 and other sources.
Contours not revised. This information
not field checked. Map edited 1992

DAYTON NORTH, OHIO
39084-G2-TF-024
1992
REVISED 1992
DMA 4163 1 SW-SERIES Y852