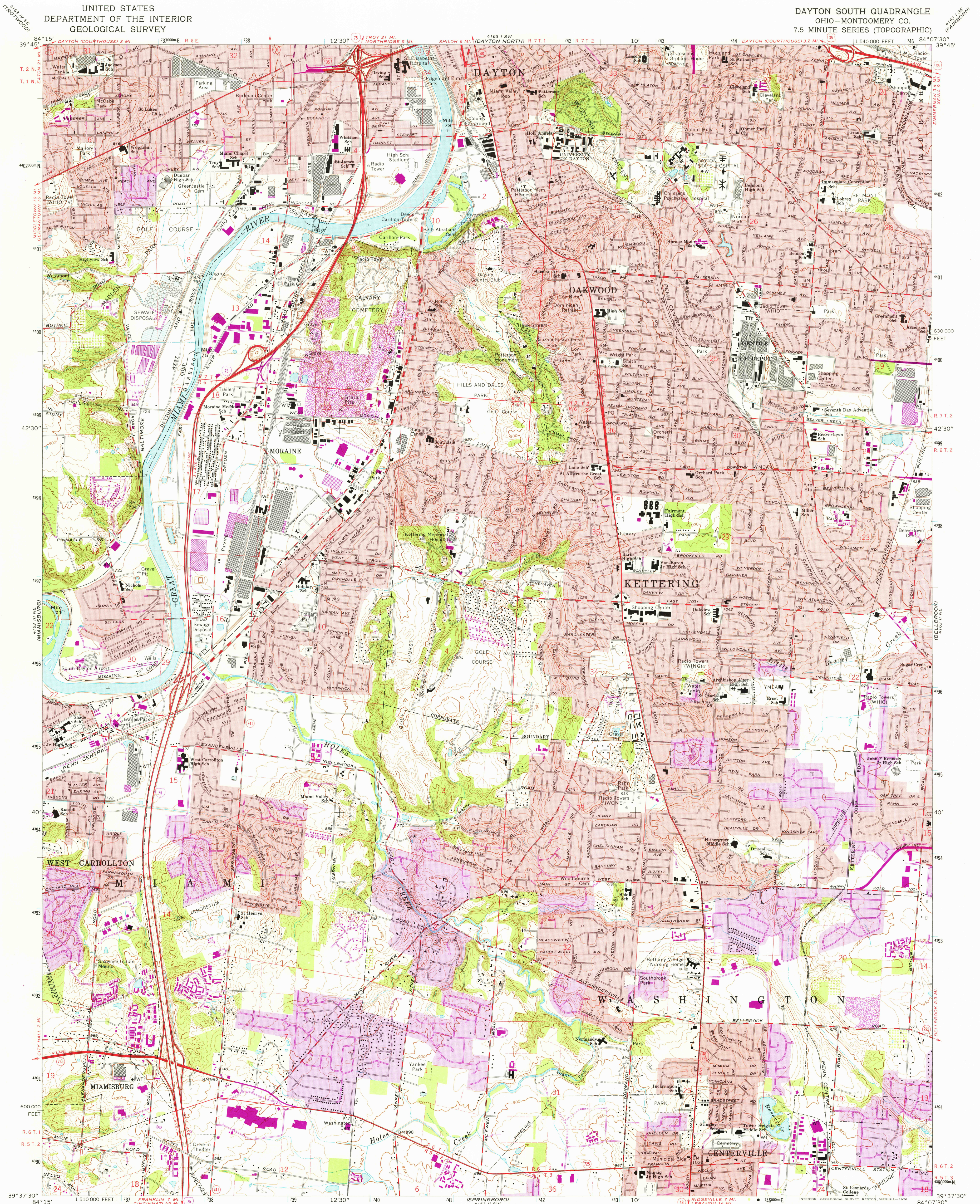
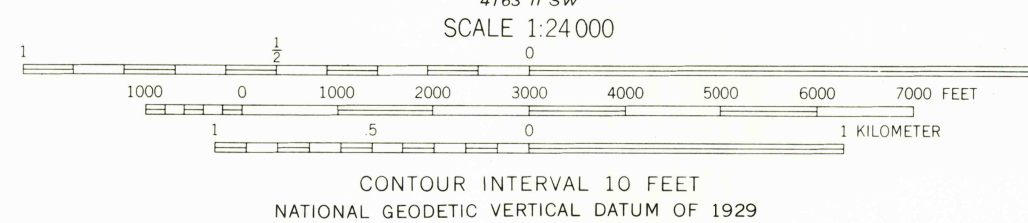


UNITED STATES
DEPARTMENT OF THE INTERIOR
GEOLOGICAL SURVEY

DAYTON SOUTH QUADRANGLE
OHIO—MONTGOMERY CO.
7.5 MINUTE SERIES (TOPOGRAPHIC)



Mapped, edited, and published by the Geological Survey
in cooperation with the Army Map Service
Revised in cooperation with State of Ohio agencies
Control by USGS and USC&GS
Topography by photogrammetric methods from aerial photographs
taken 1954. Field checked 1955. Revised from aerial
photographs taken 1964. Field checked 1966
Polyconic projection. 1927 North American datum
10,000-foot grid based on Ohio coordinate system, south zone
1000-meter Universal Transverse Mercator grid ticks, zone 16, shown in blue
Fine red dashed lines indicate selected fence and field lines where
generally visible on aerial photographs. This information is unchecked
Red tint indicates areas in which only landmark buildings are shown
Area west of the Great Miami River lies within the Miami River Survey
Area east of the Great Miami River lies within the Between the Miamis
Land lines based on the Great Miami River Base.



ROAD CLASSIFICATION
Heavy-duty ——— Light-duty ———
Medium-duty ——— Unimproved dirt ———
○ Interstate Route ○ U.S. Route ○ State Route



DAYTON SOUTH, OHIO
N3937.5—W8407.5/7.5

Revisions shown in purple compiled in cooperation with
State of Ohio agencies from aerial photographs taken
1974. This information not field checked.
Purple tint indicates extension of urban areas
1966
PHOTOREVISED 1974
AMS 4163 II NW—SERIES V852