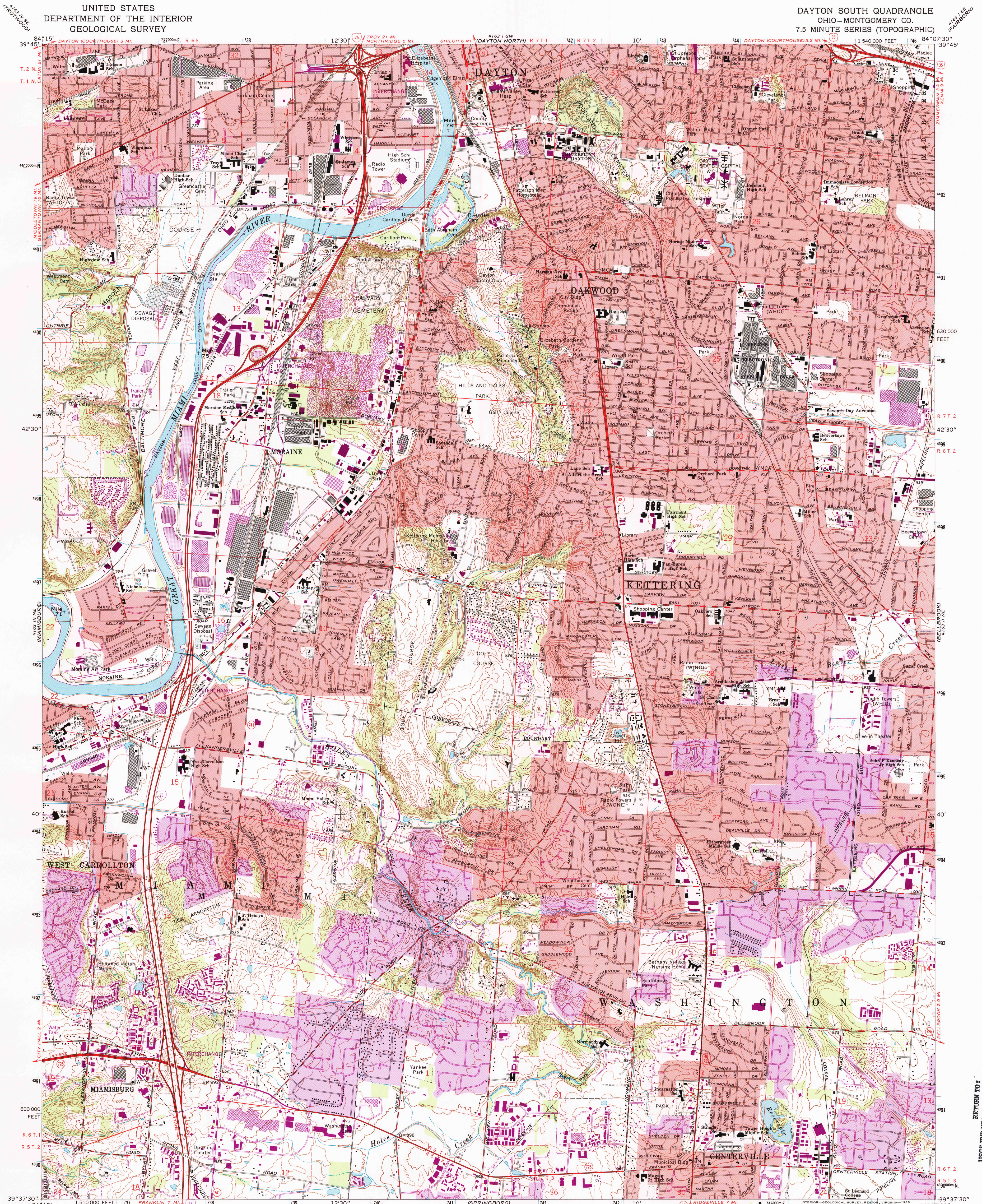


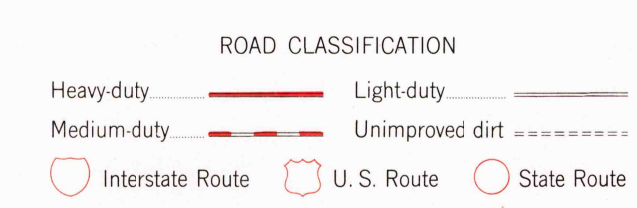
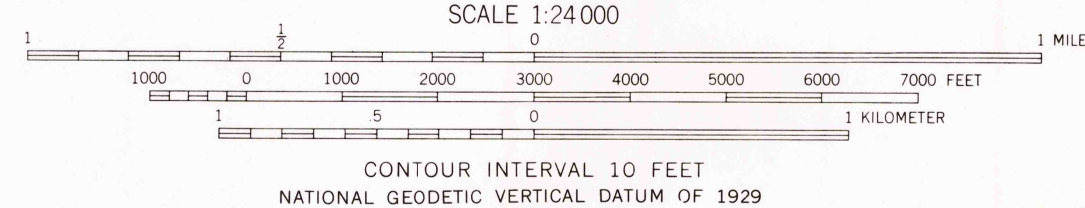
UNITED STATES  
DEPARTMENT OF THE INTERIOR  
GEOLOGICAL SURVEY

DAYTON SOUTH QUADRANGLE  
OHIO—MONTGOMERY CO.  
7.5 MINUTE SERIES (TOPOGRAPHIC)



Maped, edited, and published by the Geological Survey in cooperation with the Defense Mapping Agency. Revised in cooperation with State of Ohio agencies. Control by USGS, NOS/NOAA, and USCE. Topography by photogrammetric methods from aerial photographs taken 1954. Field checked 1955. Revised from aerial photographs taken 1964. Field checked 1966. Polyconic projection. 10,000-foot grid ticks based on Ohio coordinate system, south zone. 1000-meter Universal Transverse Mercator grid ticks, zone 16, shown in blue. 1927 North American Datum. To place on the predicted North American Datum 1983 now the projection lines 3 meters south and 6 meters west as shown by dashed corner ticks. Fine red dashed lines indicate selected fence and field lines where generally visible on aerial photographs. This information is unchecked. Red tint indicates areas in which only landmark buildings are shown. Area west of the Great Miami River lies within the Miami River Survey Area east of the Great Miami River lies within the Between the Miamis Land lines based on the Great Miami River Base. There may be private inholdings within the boundaries of the National or State Reservations shown on this map.

Revisions shown in purple and woodland compiled in cooperation with State of Ohio agencies from aerial photographs taken 1979 and other sources. This information not field checked. Map edited 1981. Purple tint indicates extension of urban areas.



DAYTON SOUTH, OHIO  
39084-F2-TF-024

1966  
PHOTOREVISED 1981  
DMA 4163 II NW-SERIES V652

THIS MAP COMPLIES WITH NATIONAL MAP ACCURACY STANDARDS FOR SALE BY U.S. GEOLOGICAL SURVEY, DENVER, COLORADO 80225, OR RESTON, VIRGINIA 22092. A FOLDER DESCRIBING TOPOGRAPHIC MAPS AND SYMBOLS IS AVAILABLE ON REQUEST.

RETURN TO:  
USGS AND HISTORICAL MAP ARCHIVES