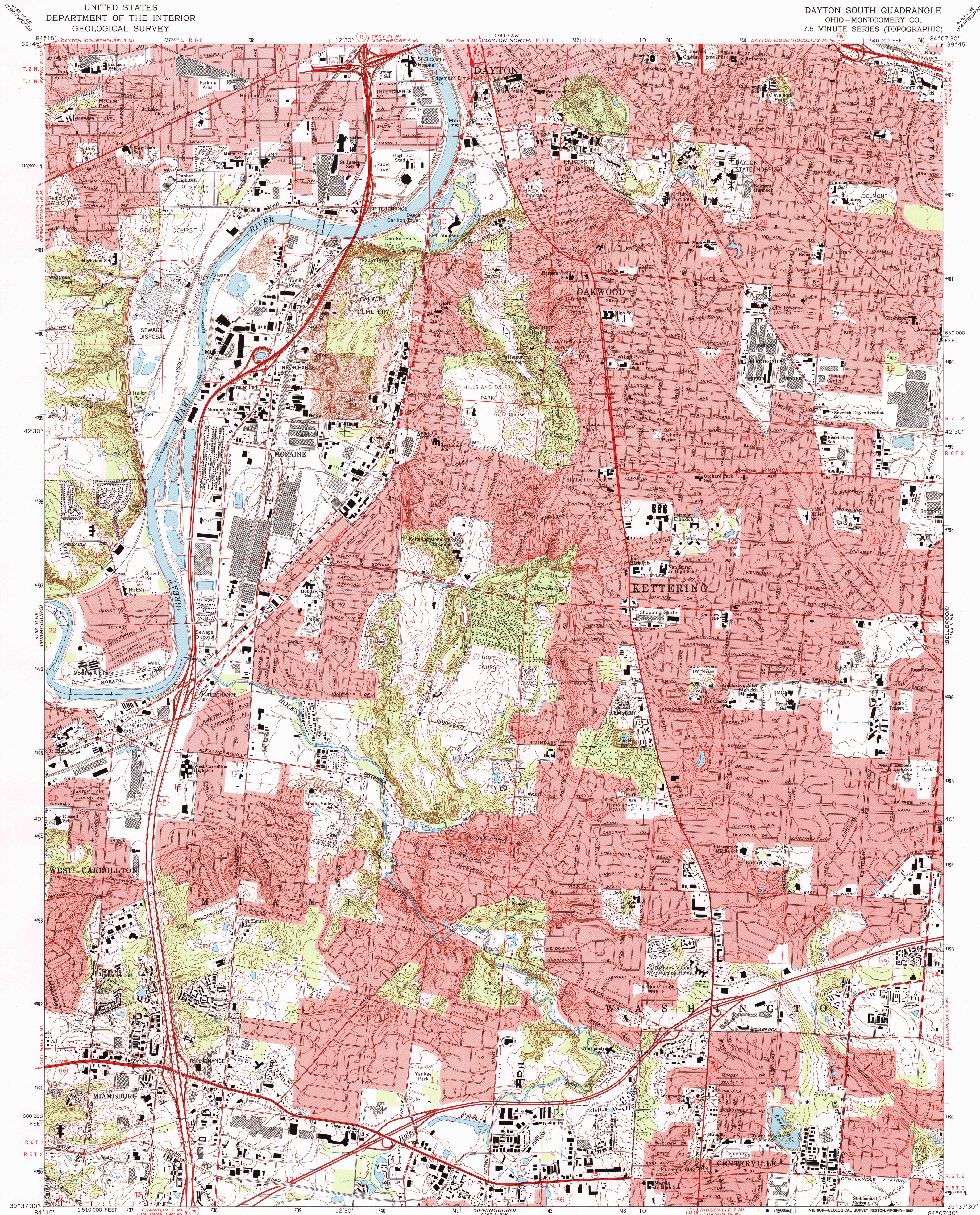


UNITED STATES
DEPARTMENT OF THE INTERIOR
GEOLOGICAL SURVEY

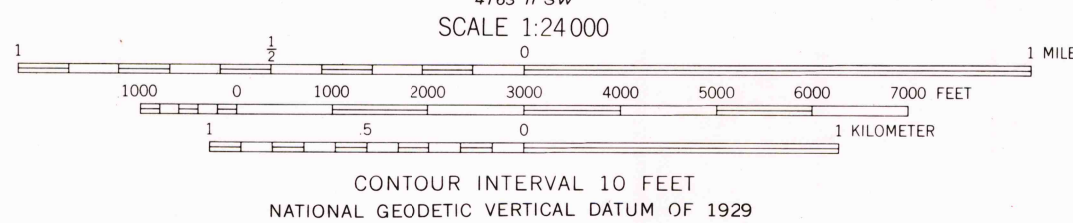
DAYTON SOUTH QUADRANGLE
OHIO—MONTGOMERY CO.
7.5 MINUTE SERIES (TOPOGRAPHIC)



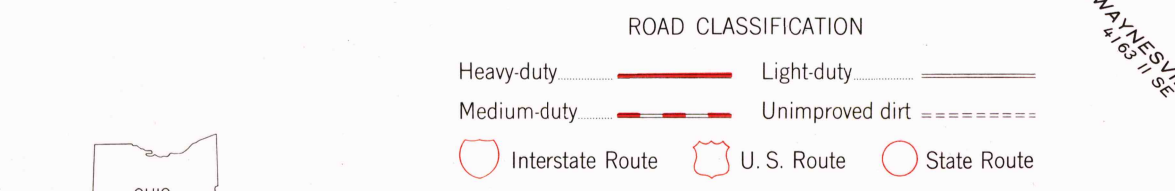
Mapped, edited, and published by the Geological Survey in cooperation with the Defense Mapping Agency. Revised in cooperation with State of Ohio agencies. Control by USGS, NOS/MOA, and USACE. Topography by photogrammetric methods from aerial photographs taken 1954. Field checked 1955. Revised from aerial photographs taken 1964. Field checked 1966. Polyconic projection. 10,000-foot grid ticks based on Ohio coordinate system, south zone. 1000-meter Universal Transverse Mercator grid ticks, zone 16, shown in blue. 1927 North American Datum. The difference between 1927 North American Datum and North American Datum of 1983 (NAD 83) for 7.5 minute intersections is given in USGS Bulletin 1875. The NAD 83 is shown by dashed corner ticks.

Fine red dashed lines indicate selected fence and field lines where generally visible on aerial photographs. This information is unchecked. Red tint indicates areas in which only landmark buildings are shown. Area west of the Great Miami River lies within the Miami River Survey. Area east of the Great Miami River lies within the Between the Miamis.

Land lines based on the Great Miami River Base. There may be private inholdings within the boundaries of the National or State reservations shown on this map.



THIS MAP COMPLIES WITH NATIONAL MAP ACCURACY STANDARDS FOR SALE BY U.S. GEOLOGICAL SURVEY. DENVER, COLORADO 80225 OR RESTON, VIRGINIA 22092. A FOLDER DESCRIBING TOPOGRAPHIC MAPS AND SYMBOLS IS AVAILABLE ON REQUEST.



DAYTON SOUTH, OHIO
39084-F2-TF-024

Revisions compiled in cooperation with State of Ohio agencies from aerial photographs taken 1988 and other sources. Contours not revised. This information not field checked. Map edited 1991.

1966
REVISED 1991
DMA 4163 II NW—SERIES V852

SEP 1992