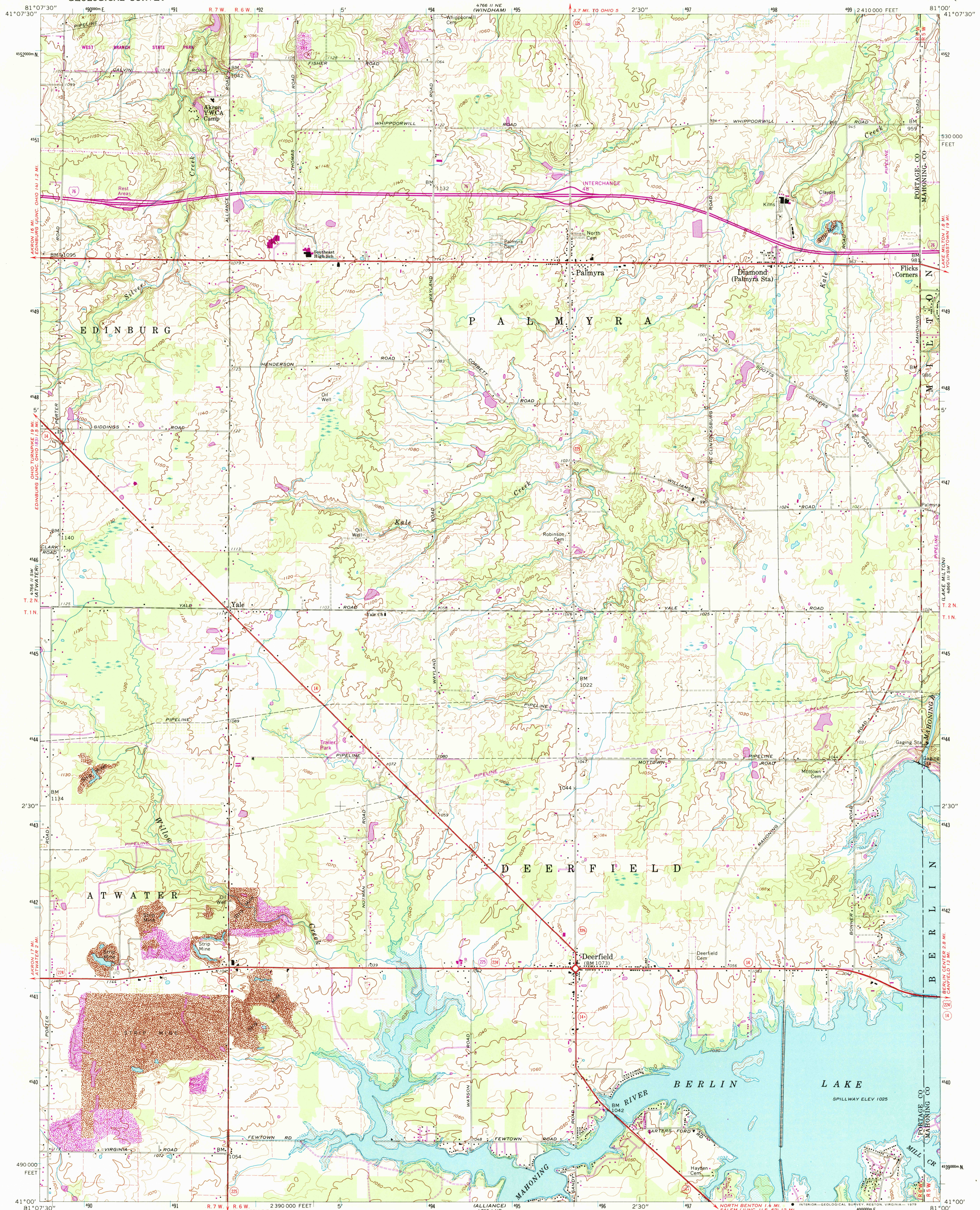


UNITED STATES
DEPARTMENT OF THE INTERIOR
GEOLOGICAL SURVEY

DEERFIELD QUADRANGLE
OHIO
7.5 MINUTE SERIES (TOPOGRAPHIC)



Mapped, edited, and published by the Geological Survey
Control by USGS and USC&GS

Topography from aerial photographs by photogrammetric methods
Aerial photographs taken 1952. Field check 1960

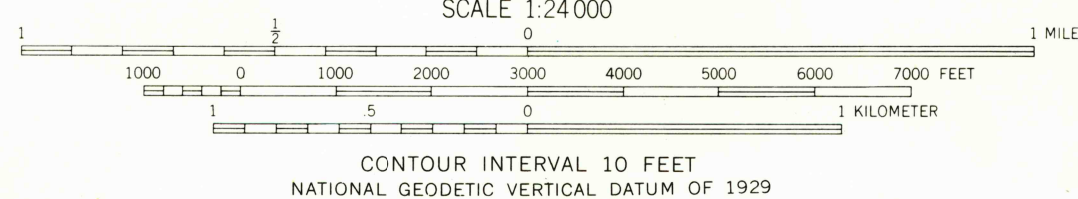
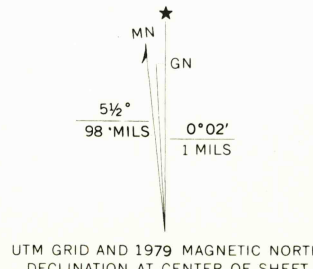
Polyconic projection. 1927 North American datum
10,000-foot grid based on Ohio coordinate system, north zone
1000-meter Universal Transverse Mercator grid ticks,
zone 17, shown in blue

Fine red dashed lines indicate selected fence and field lines where
generally visible on aerial photographs. This information is unchecked

Entire area lies within the Connecticut Western Reserve
Land lines established by private subdivision
of the Connecticut Western Reserve

Area covered by dashed light-blue pattern is
subject to controlled inundation

There may be private inholdings within the boundaries of the
National or State Reservations shown on this map.



THIS MAP COMPLIES WITH NATIONAL MAP ACCURACY STANDARDS
FOR SALE BY U.S. GEOLOGICAL SURVEY, RESTON, VIRGINIA 22092
A FOLDER DESCRIBING TOPOGRAPHIC MAPS AND SYMBOLS IS AVAILABLE ON REQUEST



QUADRANGLE LOCATION

Revisions shown in purple compiled in cooperation with
State of Ohio agencies from aerial photographs taken
1970. This information not field checked. Map edited
1979
Boundary lines shown in purple compiled from the controlling
authority

ROAD CLASSIFICATION	
Heavy-duty	Light-duty
Medium-duty	Unimproved dirt
Interstate Route	U.S. Route
	State Route

DEERFIELD, OHIO
N4100—W8100/7.5

1960
PHOTOREVISED 1979
AMS 4766 II SE—SERIES V852

RETURN TO:
USGS AND HISTORICAL MAP ARCHIVES