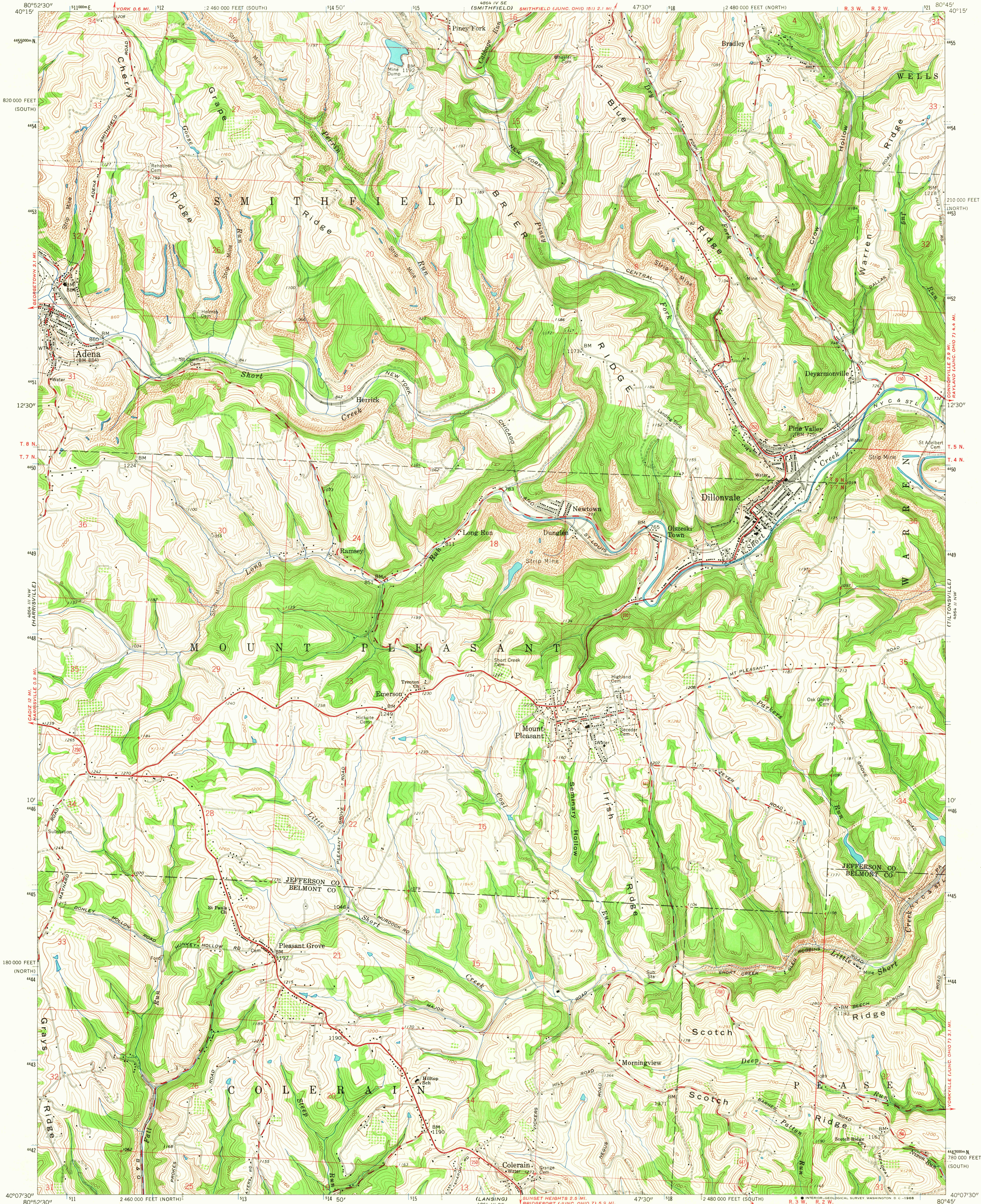


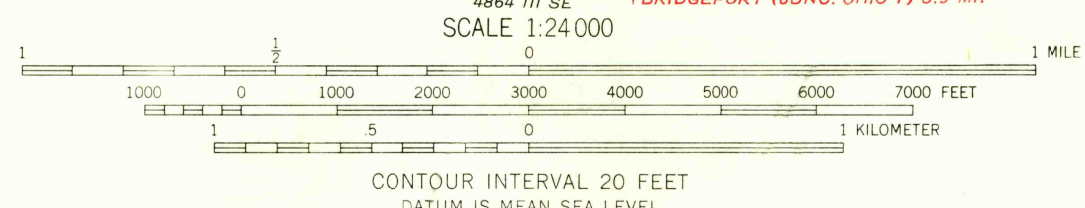
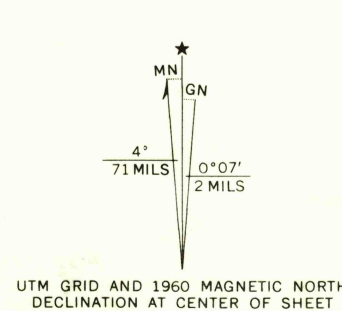
UNITED STATES
DEPARTMENT OF THE INTERIOR
GEOLOGICAL SURVEY

STATE OF OHIO
DEPARTMENT OF HIGHWAYS
DEPARTMENT OF NATURAL RESOURCES
DIVISION OF GEOLOGICAL SURVEY

DILLONVALE QUADRANGLE
OHIO
7.5 MINUTE SERIES (TOPOGRAPHIC)
NE 1/4 ST. CLAIRSVILLE 15' QUADRANGLE



Mapped, edited, and published by the Geological Survey
Control by USGS and USC&GS
Topography from aerial photographs by photogrammetric methods
Aerial photographs taken 1958. Field check 1960
Polyconic projection. 1927 North American datum
10,000-foot grids based on Ohio coordinate system, north and south zones
1000-meter Universal Transverse Mercator grid ticks, zone 17, shown in blue
Fine red dashed lines indicate selected fence and field lines where generally visible on aerial photographs. This information is unchecked
Entire area lies within the Old Seven Ranges
Land lines based on the Ohio River Base



USGS
Historical File
Topographic Division



ROAD CLASSIFICATION

Heavy-duty	Light-duty
Medium-duty	Unimproved dirt
U.S. Route	State Route

U.S.G.S.
FILE COPY
TOPOGRAPHIC DIVISION

DILLONVALE, OHIO
NE 1/4 ST. CLAIRSVILLE 15' QUADRANGLE
N 4007.5-W 8045/7.5
1960
AMS 4864 III NE-SERIES V852

4335
JUN 20 1968