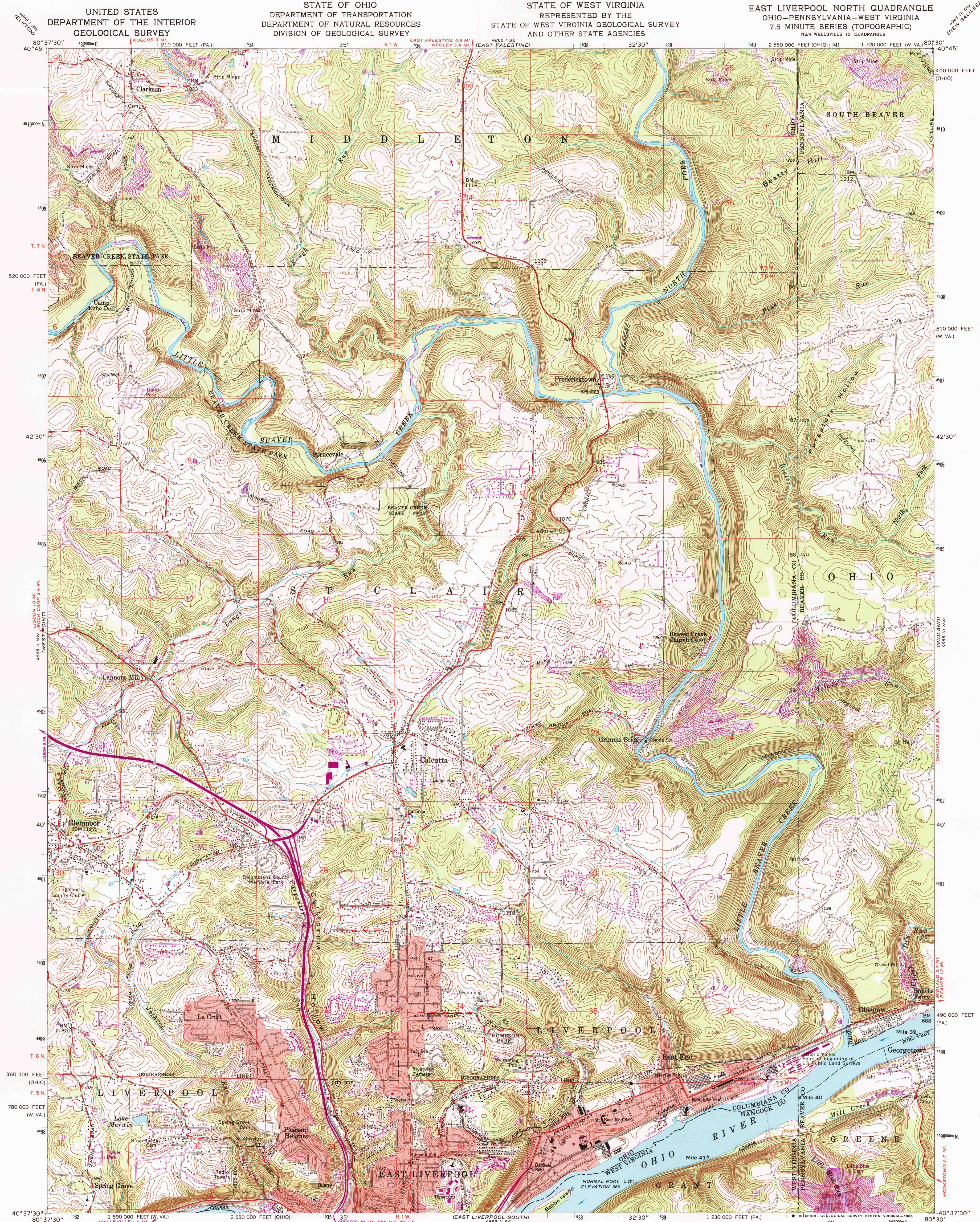


UNITED STATES
DEPARTMENT OF THE INTERIOR
GEOLOGICAL SURVEY

STATE OF OHIO
DEPARTMENT OF TRANSPORTATION
DEPARTMENT OF NATURAL RESOURCES
DIVISION OF GEOLOGICAL SURVEY

STATE OF WEST VIRGINIA
REPRESENTED BY THE
STATE OF WEST VIRGINIA GEOLOGICAL SURVEY
AND OTHER STATE AGENCIES

EAST LIVERPOOL NORTH QUADRANGLE
OHIO-PENNSYLVANIA-WEST VIRGINIA
7.5 MINUTE SERIES (TOPOGRAPHIC)
NE 4 WELLSVILLE 15' QUADRANGLE



Maped, edited, and published by the Geological Survey
Control by USGS and NOS/NOAA
Topography by photogrammetric methods from aerial
photographs taken 1956. Field checked 1960
Polyconic projection, 10,000-foot grid ticks based on Ohio
coordinate system, north zone, Pennsylvania coordinate system, south
zone, and West Virginia coordinate system, north zone
1000-meter Universal Transverse Mercator grid ticks,
zone 17, shown in blue
1927 North American Datum
To place on the predicted North American Datum 1983
move the projection lines 3 meters south and
16 meters west as shown by dashed corner ticks
Red tint indicates areas in which only landmark buildings are shown
The Ohio-W. Va. boundary as shown represents the approximate position
of the low water line as determined from U. S. Corps of Engineers Ohio
River Charts, surveyed 1913, and supplementary information
Area north of Geographers Line lies within Congress Lands north of the
Old Seven Ranges. Area south of Geographers Line lies within the Old
Seven Ranges. Land lines based on the Ohio River Base
There may be private inholdings within the boundaries of
the National or State reservations shown on this map

UTM GRID AND 1984 MAGNETIC NORTH
DECLINATION AT CENTER OF SHEET
7° 12' 12" M
0° 17' 5" M
124 MILS
5 MILS
Revisions shown in purple and woodland compiled in cooperation
with State of Ohio agencies from aerial photographs taken 1982
Map edited 1984
This information not field checked
Purple hatching indicates area to be submerged

SCALE 1:24,000
CONTOUR INTERVAL 20 FEET
NATIONAL GEODETIC VERTICAL DATUM OF 1929
THIS MAP COMPLIES WITH NATIONAL MAP ACCURACY STANDARDS
FOR SALE BY U. S. GEOLOGICAL SURVEY
DENVER, COLORADO 80225, OR RESTON, VIRGINIA 22092
A FOLDER DESCRIBING TOPOGRAPHIC MAPS AND SYMBOLS IS AVAILABLE ON REQUEST

ROAD CLASSIFICATION
Heavy-duty ——— Light-duty ———
Medium-duty ——— Unimproved dirt ———
U. S. Route ——— State Route ———
EAST LIVERPOOL NORTH, OHIO-PA.-W. VA.
NE 4 WELLSVILLE 15' QUADRANGLE
40080-F5-TF-024

1960
PHOTOREVISED 1984
DMA 4865 II NE-SERIES V852

RETURN TO:
AND HISTORICAL MAP ARCHIVES
USGS NATIONAL CENTER, 45-522
RESTON, VA 22092