

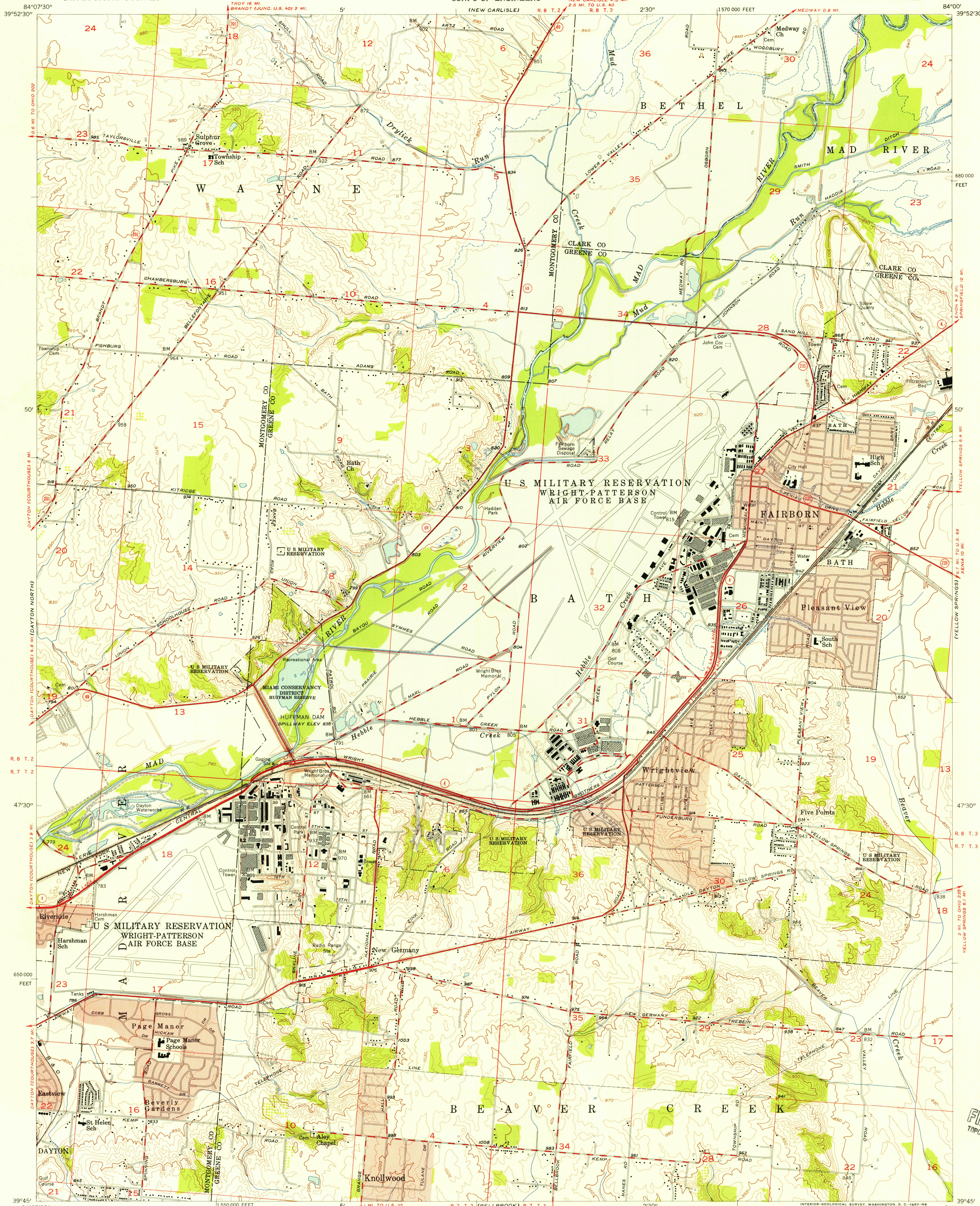
(TIPP CITY)

UNITED STATES
DEPARTMENT OF THE INTERIOR
GEOLOGICAL SURVEY

UNITED STATES
DEPARTMENT OF THE ARMY
CORPS OF ENGINEERS

FAIRBORN QUADRANGLE
OHIO
7.5 MINUTE SERIES (TOPOGRAPHIC)
SE/4 DAYTON 15' QUADRANGLE

(CONNELSVILLE)

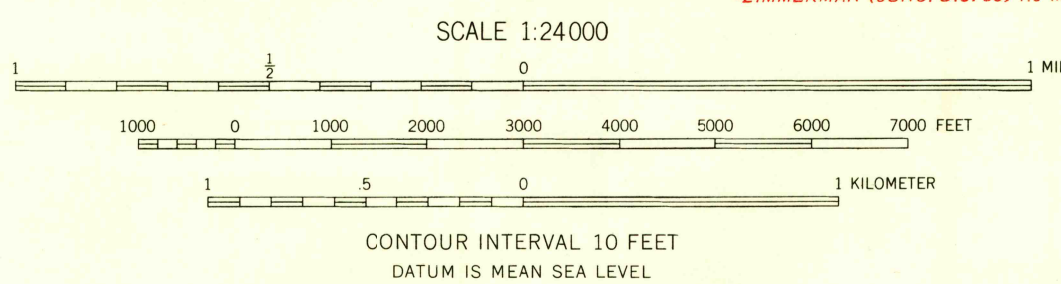


U.S.G.S.
FILE COPY
TOPOGRAPHIC DIVISION

U.S.G.S.
FILE COPY
TOPOGRAPHIC DIVISION

Mapped, edited, and published by the Geological Survey
Control by USGS and USC&GS
Topography from aerial photographs by photogrammetric
methods. Aerial photographs taken 1954. Field check 1955
Polyconic projection. 1927 North American datum
10,000-foot grid based on Ohio coordinate system,
south zone
Red tint indicates areas in which only
landmark buildings are shown
Blue dashed lines indicate approximate area
subject to controlled inundation
Land lines based on the Great Miami River Base

TRUE NORTH
MAGNETIC NORTH
APPROXIMATE MEAN
DECLINATION, 1955



USGS
Historical File
Topographic Division



ROAD CLASSIFICATION
Heavy-duty ——— Light-duty ———
Medium-duty ——— Unimproved dirt ———
U.S. Route ——— State Route ———

FAIRBORN, OHIO
SE/4 DAYTON 15' QUADRANGLE
N 3945 — W 8400 / 7.5

1955

THIS MAP COMPLIES WITH NATIONAL MAP ACCURACY STANDARDS
FOR SALE BY U.S. GEOLOGICAL SURVEY, WASHINGTON 25, D.C.
A FOLDER DESCRIBING TOPOGRAPHIC MAPS AND SYMBOLS IS AVAILABLE ON REQUEST

DEC 28 1956

4140