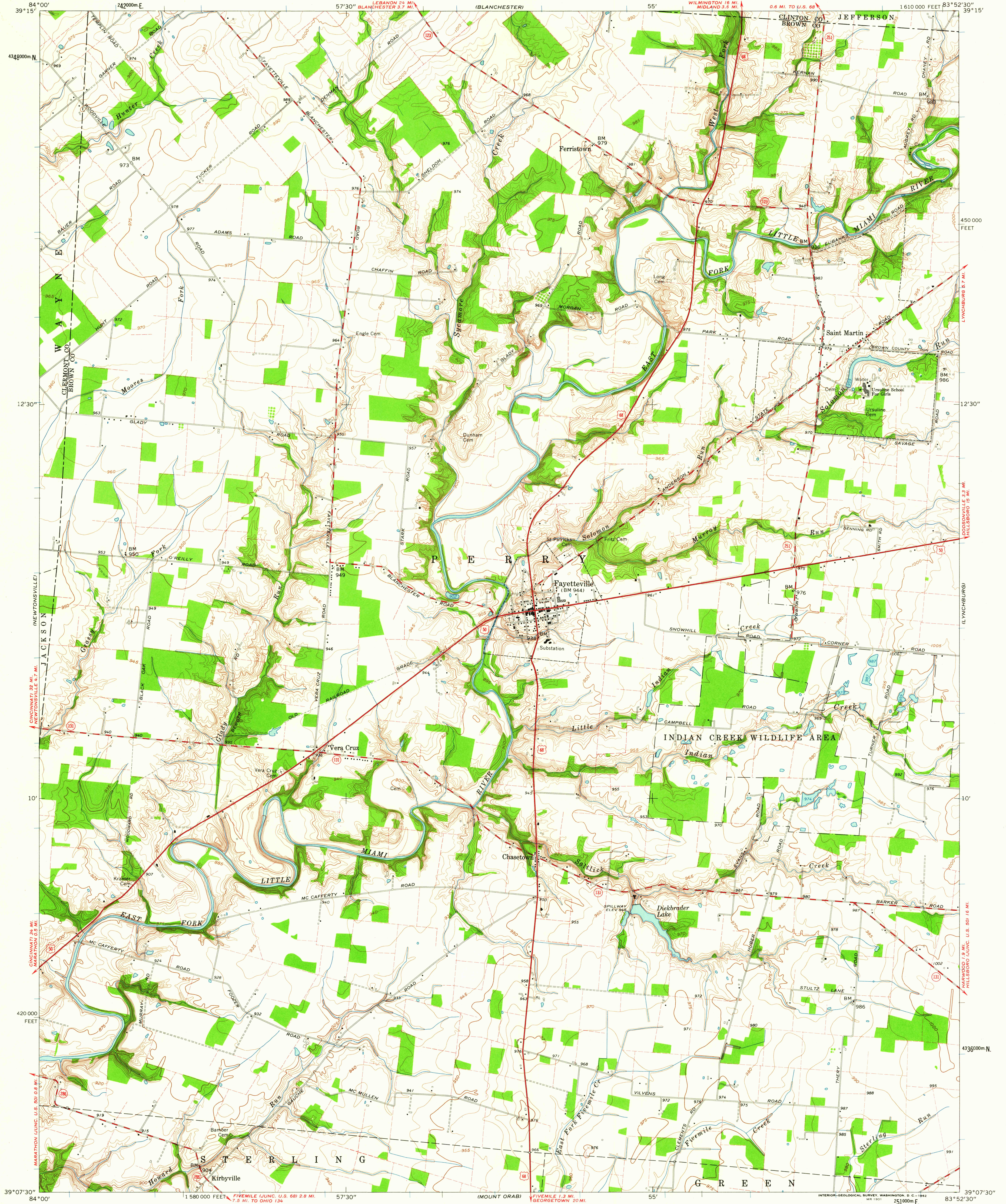


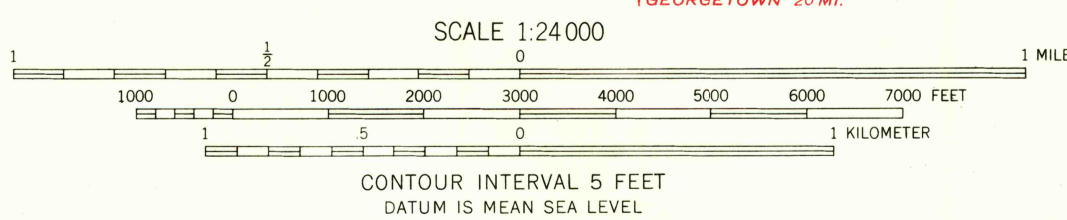
UNITED STATES  
DEPARTMENT OF THE INTERIOR  
GEOLOGICAL SURVEY

STATE OF OHIO  
DEPARTMENT OF HIGHWAYS  
DEPARTMENT OF NATURAL RESOURCES  
DIVISION OF GEOLOGICAL SURVEY

FAYETTEVILLE QUADRANGLE  
OHIO  
7.5 MINUTE SERIES (TOPOGRAPHIC)  
NW/4 SARDINIA 15' QUADRANGLE



Mapped, edited, and published by the Geological Survey  
Control by USGS and USC&GS  
Culture and drainage in part compiled from aerial photographs  
taken 1959. Topography by planetable surveys 1960  
Polyconic projection. 1927 North American datum  
10,000-foot grid based on Ohio coordinate system, south zone  
1000-meter Universal Transverse Mercator grid ticks,  
zone 17, shown in blue  
Fine red dashed lines indicate selected fence and field lines where  
generally visible on aerial photographs. This information is unchecked  
Entire area lies within the Virginia Military District



USGS  
Historical File  
Topographic Division

ROAD CLASSIFICATION  
Heavy-duty ——— Light-duty ———  
Medium-duty ——— Unimproved dirt ———  
U.S. Route ——— State Route ———



U.S.G.S. FILE COPY  
FAYETTEVILLE, OHIO  
NW/4 SARDINIA 15' QUADRANGLE  
N3907.5—W8352.5/7.5

THIS MAP COMPLIES WITH NATIONAL MAP ACCURACY STANDARDS  
FOR SALE BY U.S. GEOLOGICAL SURVEY, WASHINGTON 25, D. C.  
A FOLDER DESCRIBING TOPOGRAPHIC MAPS AND SYMBOLS IS AVAILABLE ON REQUEST

1960

May 2, 1962

2600