

5486 NE
(BLOOMDALE)

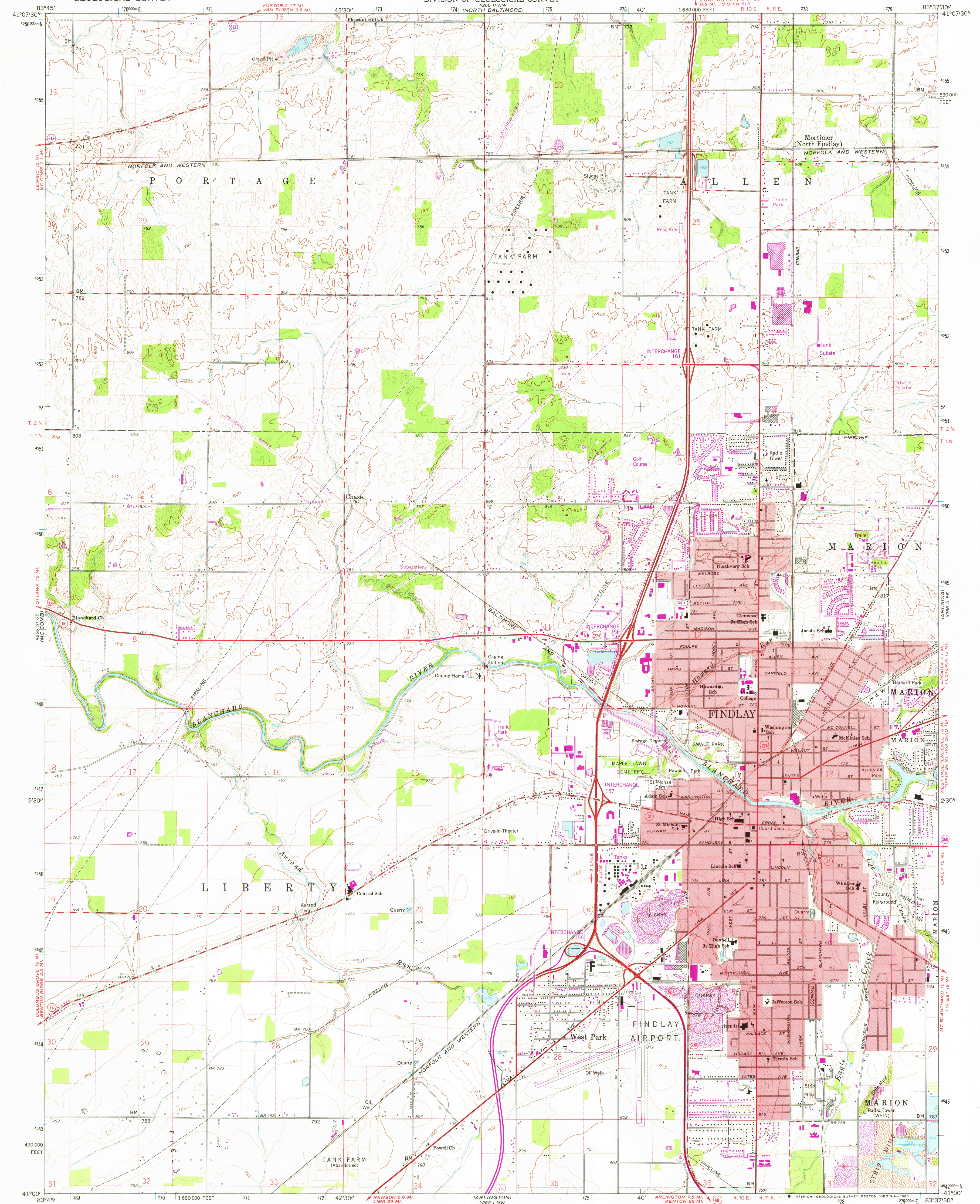
UNITED STATES
DEPARTMENT OF THE INTERIOR
GEOLOGICAL SURVEY



STATE OF OHIO
DEPARTMENT OF HIGHWAYS
DEPARTMENT OF NATURAL RESOURCES
DIVISION OF GEOLOGICAL SURVEY

FINDLAY QUADRANGLE
OHIO—HANCOCK CO.
7.5 MINUTE SERIES (TOPOGRAPHIC)

5486 NE
(BLOOMDALE)



Mapped, edited, and published by the Geological Survey
Control by USGS and USC&GS
Topography by photogrammetric methods from aerial
photographs taken 1959 and by plane-table surveys 1960
Polyconic projection. 1927 North American datum
10,000-foot grid based on Ohio coordinate system, north zone
1000-meter Universal Transverse Mercator grid ticks,
zone 17, shown in blue
To place on the predicted North American Datum 1983
move the projection lines 1 meter south and
7 meters west as shown by dashed corner ticks
Fine red dashed lines indicate selected fence and field lines where
generally visible on aerial photographs. This information is unchecked
Entire area lies within Congress Lands
Land lines based on First Principal Meridian
Red tint indicates areas in which only landmark buildings are shown

UTM GRID AND 1979 MAGNETIC NORTH
DECLINATION AT CENTER OF SHEET

THIS MAP COMPLIES WITH NATIONAL MAP ACCURACY STANDARDS
FOR SALE BY U. S. GEOLOGICAL SURVEY, RESTON, VIRGINIA 22092
A FOLDER DESCRIBING TOPOGRAPHIC MAPS AND SYMBOLS IS AVAILABLE ON REQUEST

Revisions shown in purple compiled in cooperation with State of
Ohio agencies and from aerial photographs taken 1977 and other
source data. This information not field checked. Map edited 1979
Boundary lines shown in purple compiled from latest
information available from the controlling authority

ROAD CLASSIFICATION
Heavy-duty ——— Light-duty ———
Medium-duty ——— Unimproved dirt ———
Interstate Route ——— U. S. Route ——— State Route ———

USGS
Historical File
Topographic Division

FINDLAY, OHIO
N4100—W8337.5.7
1960
PHOTOREVISED 1979
DMA 4265 II SW—SERIES V852

FEB 13 1980