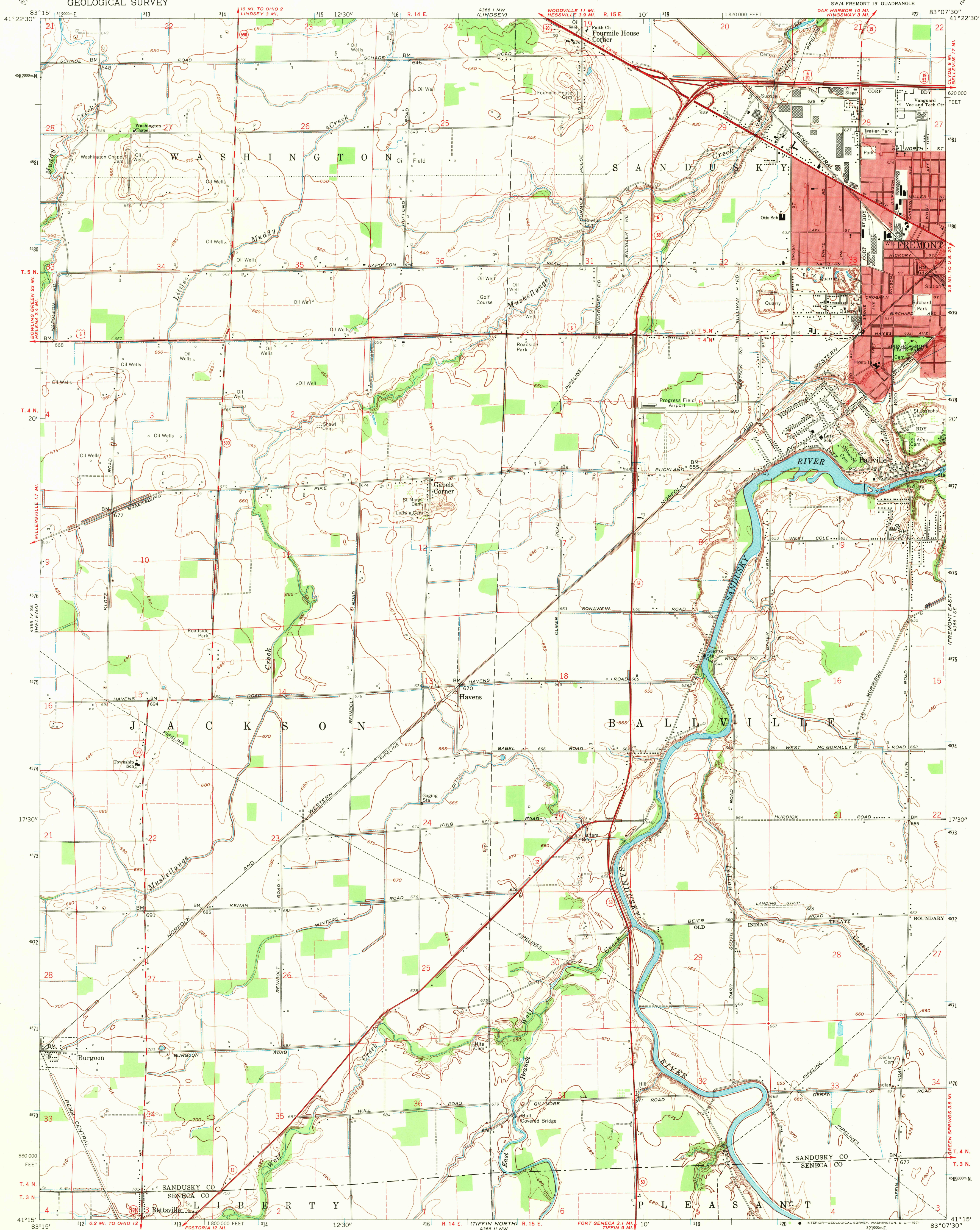
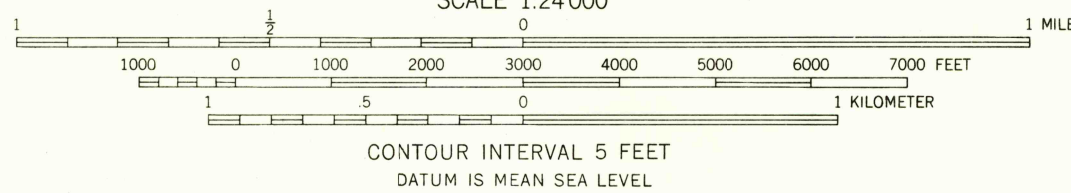


UNITED STATES
DEPARTMENT OF THE INTERIOR
GEOLOGICAL SURVEY

FREMONT WEST QUADRANGLE
OHIO
7.5 MINUTE SERIES (TOPOGRAPHIC)
SW 1/4 FREMONT 15' QUADRANGLE



Mapped, edited, and published by the Geological Survey
Revised in cooperation with State of Ohio agencies
Control by USGS and USCGS
Planimetry by photogrammetric methods from aerial photographs
taken 1951. Topography by planimetric surveys 1958. Revised from aerial
photographs taken 1969. Field checked 1969
Polyconic projection. 1927 North American datum
10,000-foot grid based on Ohio coordinate system, north zone
1000-meter Universal Transverse Mercator grid ticks, zone 17,
shown in blue
Fine red dashed lines indicate selected fence and field lines where
generally visible on aerial photographs. This information is unchecked
Red tint indicates area in which only landmark buildings are shown
Entire area lies within Congress Lands
Land lines based on the First Principal Meridian



ROAD CLASSIFICATION
Primary highway, all weather, hard surface
Secondary highway, all weather, hard surface
Light-duty road, all weather, improved surface
Unimproved road, fair or dry weather
U.S. Route
State Route



FREMONT WEST, OHIO
SW 1/4 FREMONT 15' QUADRANGLE
N4115-W8307.5/7.5
1969
AMS 4366 I SW-SERIES Y852

AUG 13 1971

USGS
HISTORICAL FILE
TOPOGRAPHIC DIVISION