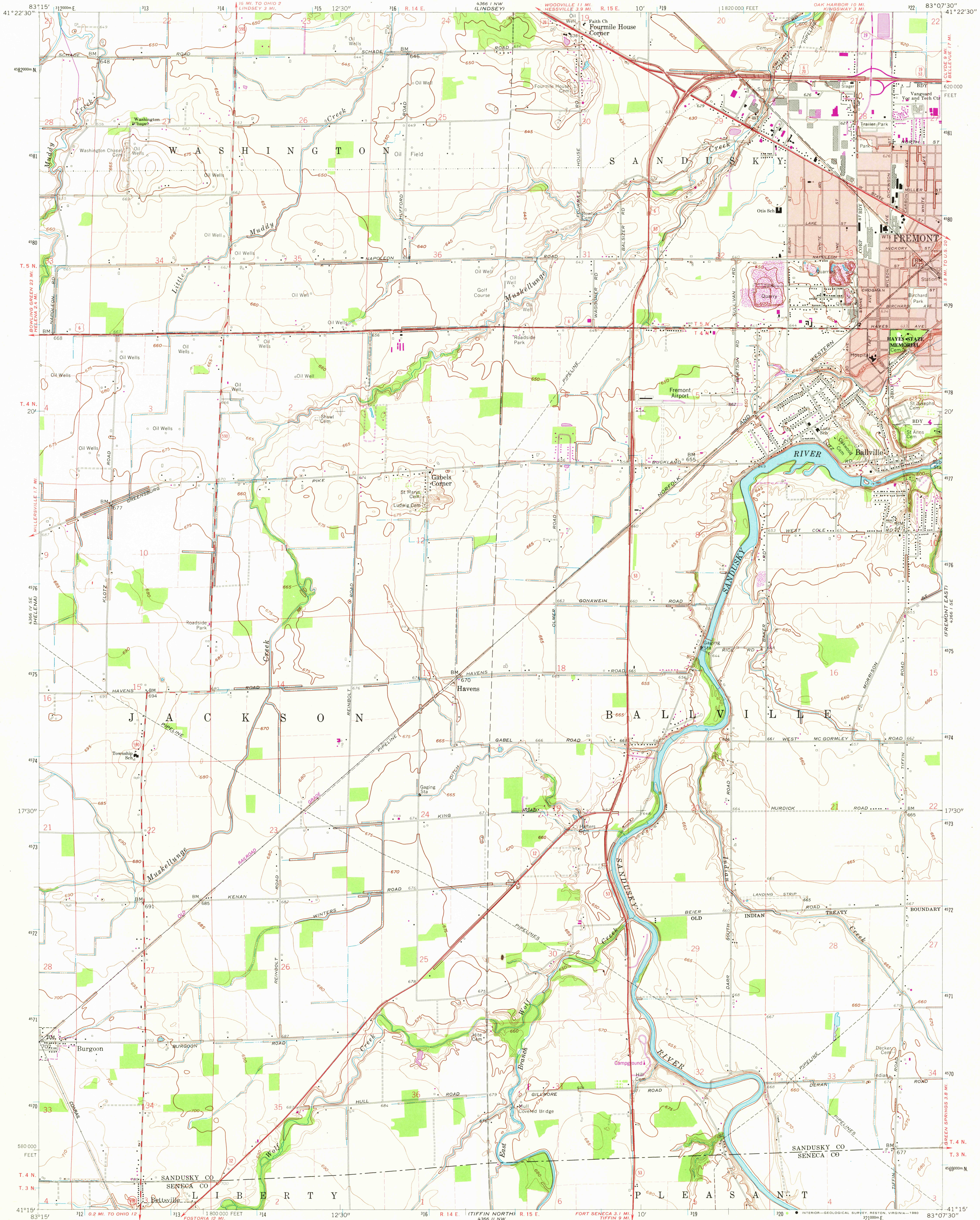
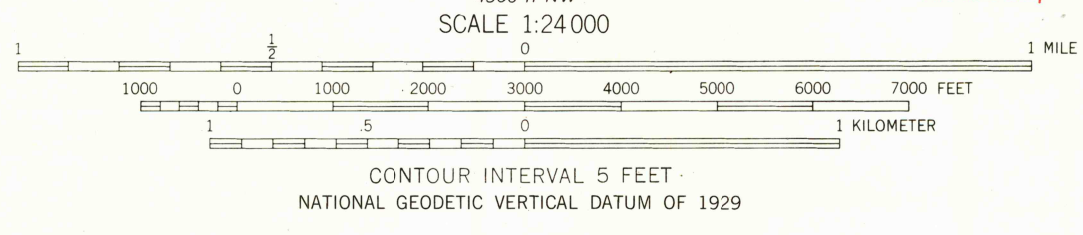


UNITED STATES
DEPARTMENT OF THE INTERIOR
GEOLOGICAL SURVEY

FREMONT WEST QUADRANGLE
OHIO
7.5 MINUTE SERIES (TOPOGRAPHIC)



Mapped, edited, and published by the Geological Survey
Revised in cooperation with State of Ohio agencies
Control by USGS and NOS/NOAA
Planimetry by photogrammetric methods from aerial photographs
taken 1951. Topography by planimetric surveys 1958. Revised from aerial
photographs taken 1969. Field checked 1969
Polyconic projection. 10,000-foot grid based on Ohio coordinate system,
north zone. 1000-meter Universal Transverse Mercator grid ticks, zone 17,
shown in blue. 1927 North American Datum. To place on the predicted North
American Datum 1983 move the projection lines 1 meter south and
8 meters west as shown by dashed corner ticks
Fine red dashed lines indicate selected fence and field lines where
generally visible on aerial photographs. This information not checked
Red tint indicates area in which only landmark buildings are shown
Land lines based on the First Principal Meridian
Entire area lies within Congress Lands
There may be private inholdings within the boundaries of
the National or State reservations shown on this map



ROAD CLASSIFICATION
Primary highway, all weather, hard surface
Secondary highway, all weather, hard surface
Light-duty road, all weather, improved surface
Unimproved road, fair or dry weather
U. S. Route
State Route

USGS
Historical File
Topographic Division

FREMONT WEST, OHIO
N4115-W8307.5/7.5
1969
PHOTOREVISED 1980
DMA 4366 I SW-SERIES V852

THIS MAP COMPLIES WITH NATIONAL MAP ACCURACY STANDARDS
FOR SALE BY U. S. GEOLOGICAL SURVEY, RESTON, VIRGINIA 22092
A FOLDER DESCRIBING TOPOGRAPHIC MAPS AND SYMBOLS IS AVAILABLE ON REQUEST

DEC 1, 1980
2350