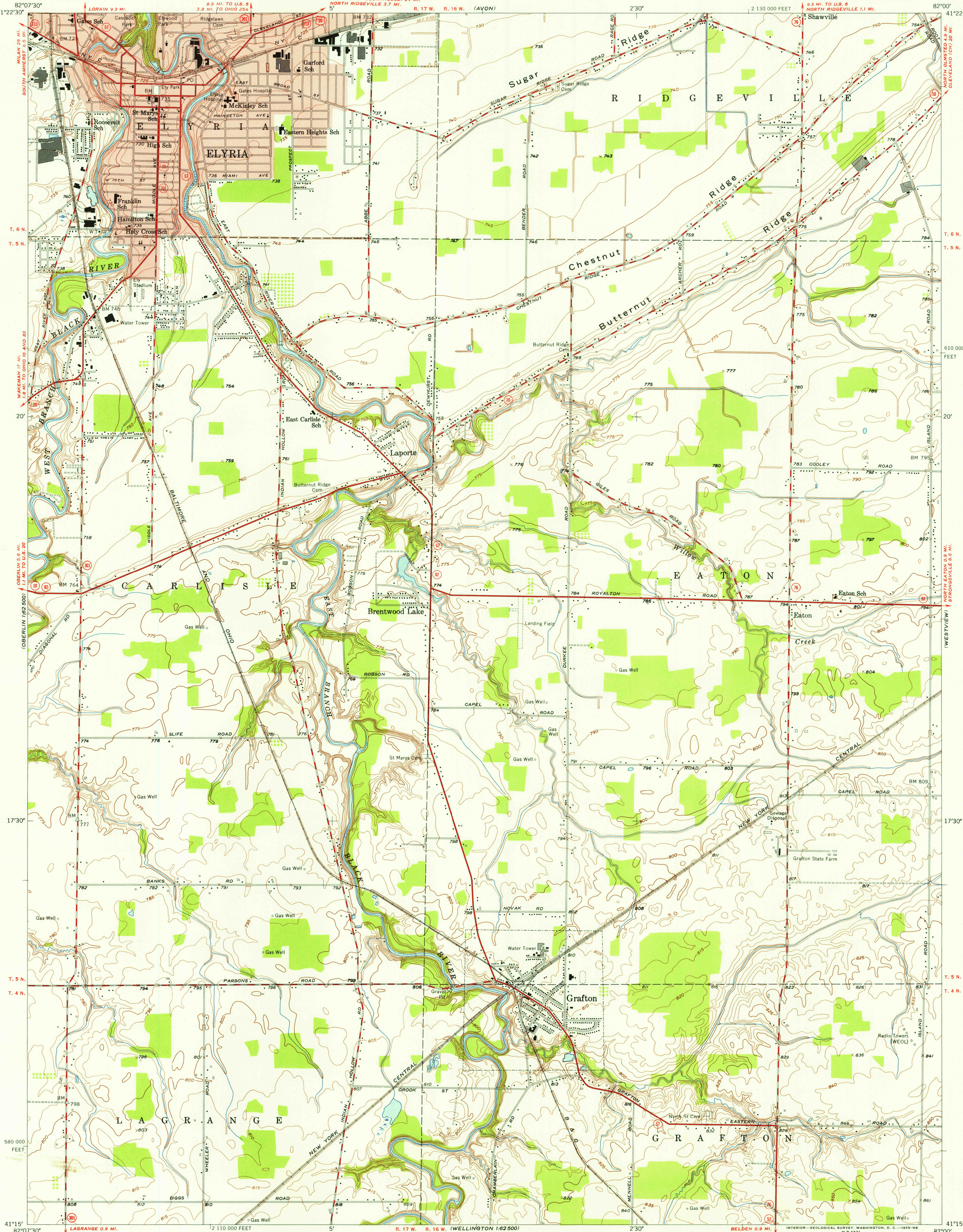


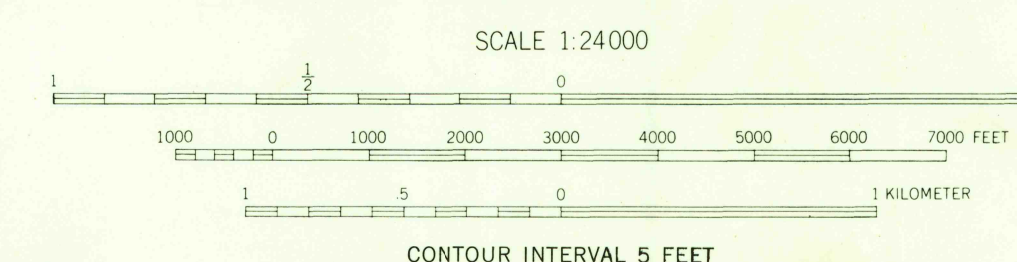
UNITED STATES  
DEPARTMENT OF THE INTERIOR  
GEOLOGICAL SURVEY

GRAFTON QUADRANGLE  
OHIO-LORAIN CO.  
7.5 MINUTE SERIES (TOPOGRAPHIC)  
SE/4 OBERLIN 15' QUADRANGLE

U.S.G.S.  
FILE COPY  
TOPOGRAPHIC DIVISION



Mapped, edited, and published by the Geological Survey  
Control by USGS and USC&GS  
Culture and drainage in part compiled from aerial photographs  
taken 1952. Topography by plane-table surveys 1953  
Polyconic projection, 1927 North American datum  
10,000-foot grid based on Ohio coordinate system,  
north zone  
Red tint indicates areas in which only  
landmark buildings are shown  
Entire area lies within the Connecticut Western Reserve  
Land lines were established by the Connecticut Land Company



USGS  
Historical File  
Topographic Division

ROAD CLASSIFICATION  
Heavy-duty 4 LANE 15 LANE Light-duty  
Medium-duty 4 LANE 15 LANE Unimproved dirt  
U.S. Route State Route



GRAFTON, OHIO  
SE/4 OBERLIN 15' QUADRANGLE  
N4115-W8200/7.5

1953

HISTORICAL  
MAY 2 1955  
4275