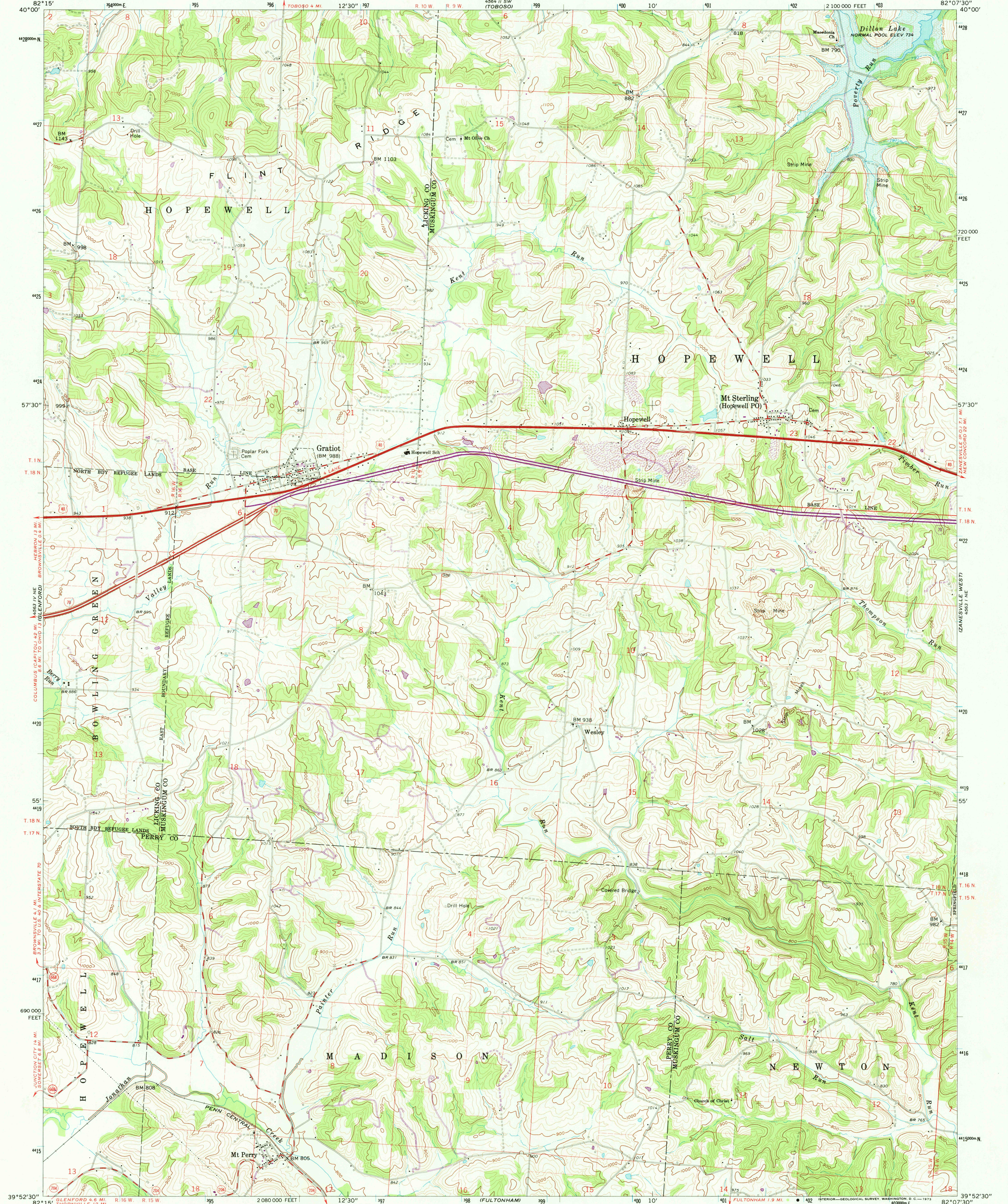


UNITED STATES
DEPARTMENT OF THE INTERIOR
GEOLOGICAL SURVEY

STATE OF OHIO
DEPARTMENT OF HIGHWAYS
DEPARTMENT OF NATURAL RESOURCES
DIVISION OF GEOLOGICAL SURVEY

GRATIOT QUADRANGLE
OHIO
7.5 MINUTE SERIES (TOPOGRAPHIC)

4563 1 SE
(GLENFORD)



Mapped, edited, and published by the Geological Survey
Control by USGS and USC&GS
Topography by photogrammetric methods from aerial
photographs taken 1960. Field checked 1962
Polyconic projection. 1927 North American datum. 10,000-foot grid
based on Ohio coordinate system, south zone. 1000-meter
Universal Transverse Mercator grid ticks, zone 17, shown in blue
Area north of Base Line lies within the United States Military District
Land lines based on the Base Line of the United States Military District
Area south of Base Line lies within Congress Lands
east of the Scioto River. Land lines based on the Ohio River Base
Area covered by dashed light-blue pattern is subject to controlled inundation
All wells shown are oil wells
Fine red dashed lines indicate selected fence and field lines where
generally visible on aerial photographs. This information is unchecked

UTM GRID AND 1972 MAGNETIC NORTH
DECLINATION AT CENTER OF SHEET

SCALE 1:24,000
CONTOUR INTERVAL 20 FEET
DATUM IS MEAN SEA LEVEL

OHIO
QUADRANGLE LOCATION

ROAD CLASSIFICATION
Heavy-duty ——— Light-duty ———
Medium-duty ——— Unimproved dirt ———
Interstate Route U.S. Route State Route

GRATIOT, OHIO
N3952.5-W8207.5/7.5
1962
PHOTOREVISED 1972
AMS 4563 1 NW-SERIES V852

THIS MAP COMPLIES WITH NATIONAL MAP ACCURACY STANDARDS
FOR SALE BY U.S. GEOLOGICAL SURVEY, WASHINGTON, D.C. 20242
A FOLDER DESCRIBING TOPOGRAPHIC MAPS AND SYMBOLS IS AVAILABLE ON REQUEST

Revisions shown in purple compiled in cooperation with
State of Ohio agencies from aerial photographs taken
1972. This information not field checked