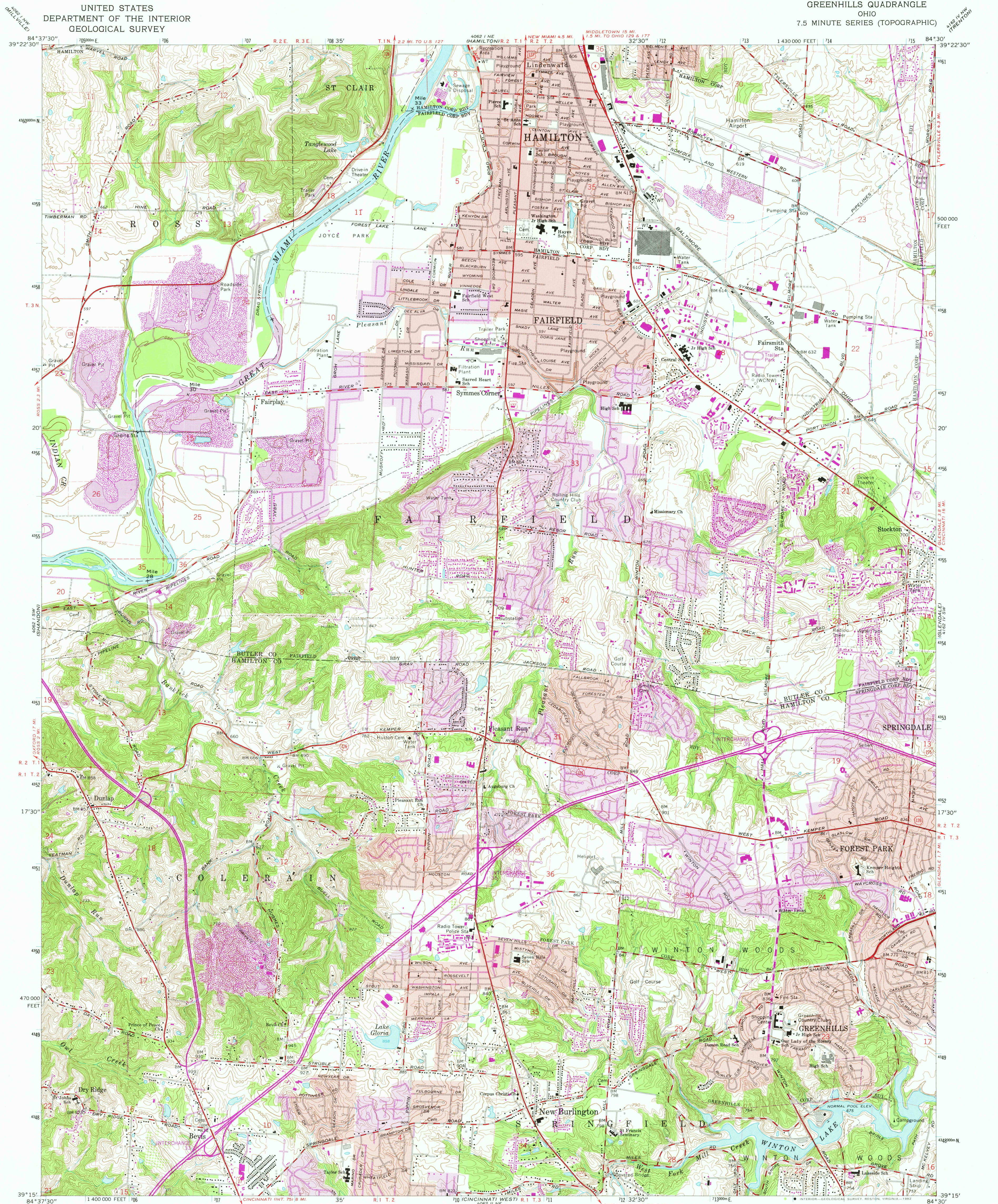
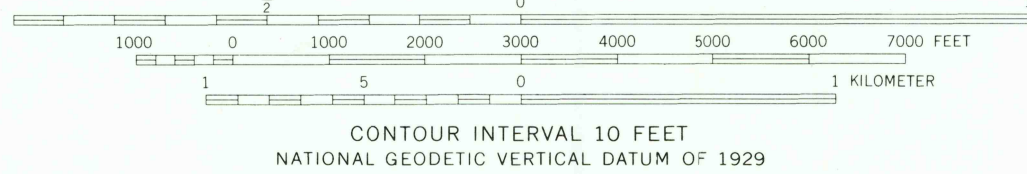
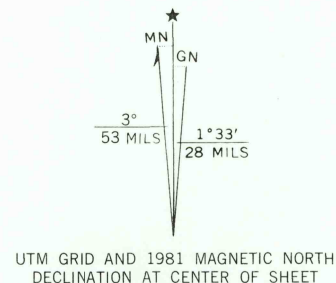


UNITED STATES
DEPARTMENT OF THE INTERIOR
GEOLOGICAL SURVEY

GREENHILLS QUADRANGLE
OHIO
7.5 MINUTE SERIES (TOPOGRAPHIC)



Mapped, edited, and published by the Geological Survey in cooperation with Defense Mapping Agency. Revised in cooperation with State of Ohio agencies. Control by USGS, NOS/NOAA, and City of Cincinnati. Topography by photogrammetric methods from aerial photographs taken 1954. Field checked 1955. Revised 1965. Polyconic projection. 10,000-foot grid ticks based on Ohio coordinate system, south zone. 1000-meter Universal Transverse Mercator grid ticks, zone 16, shown in blue. 1927 North American Datum. To place on the predicted North American Datum 1983 move the projection lines 3 meters south and 5 meters west as shown by dashed corner ticks. Red tint indicates areas in which only landmark buildings are shown. Area west of the Great Miami River lies within the Miami River Survey Area east of the Great Miami River lies within the Between the Miamis Land lines based on the Great Miami River Base. Dotted land lines established by private subdivision of the Symmes Purchase.



ROAD CLASSIFICATION	
Heavy-duty	Light-duty
Medium-duty	Unimproved dirt
Interstate Route	U.S. Route
	State Route

GREENHILLS, OHIO

N3915-W8430/7.5

1965
PHOTOREVISED 1981
DMA 4062 I SE-SERIES V852

THIS MAP COMPLIES WITH NATIONAL MAP ACCURACY STANDARDS
FOR SALE BY U.S. GEOLOGICAL SURVEY, RESTON, VIRGINIA 22092
A FOLDER DESCRIBING TOPOGRAPHIC MAPS AND SYMBOLS IS AVAILABLE ON REQUEST

Revisions shown in purple and woodland compiled in cooperation with State of Ohio agencies from aerial photographs taken 1979 and other sources. This information not field checked. Map edited 1981. Purple tint indicates extension of urban areas.

RETURN TO:
USGS AND HISTORICAL MAP ARCHIVES

MAY 28 1982

2581