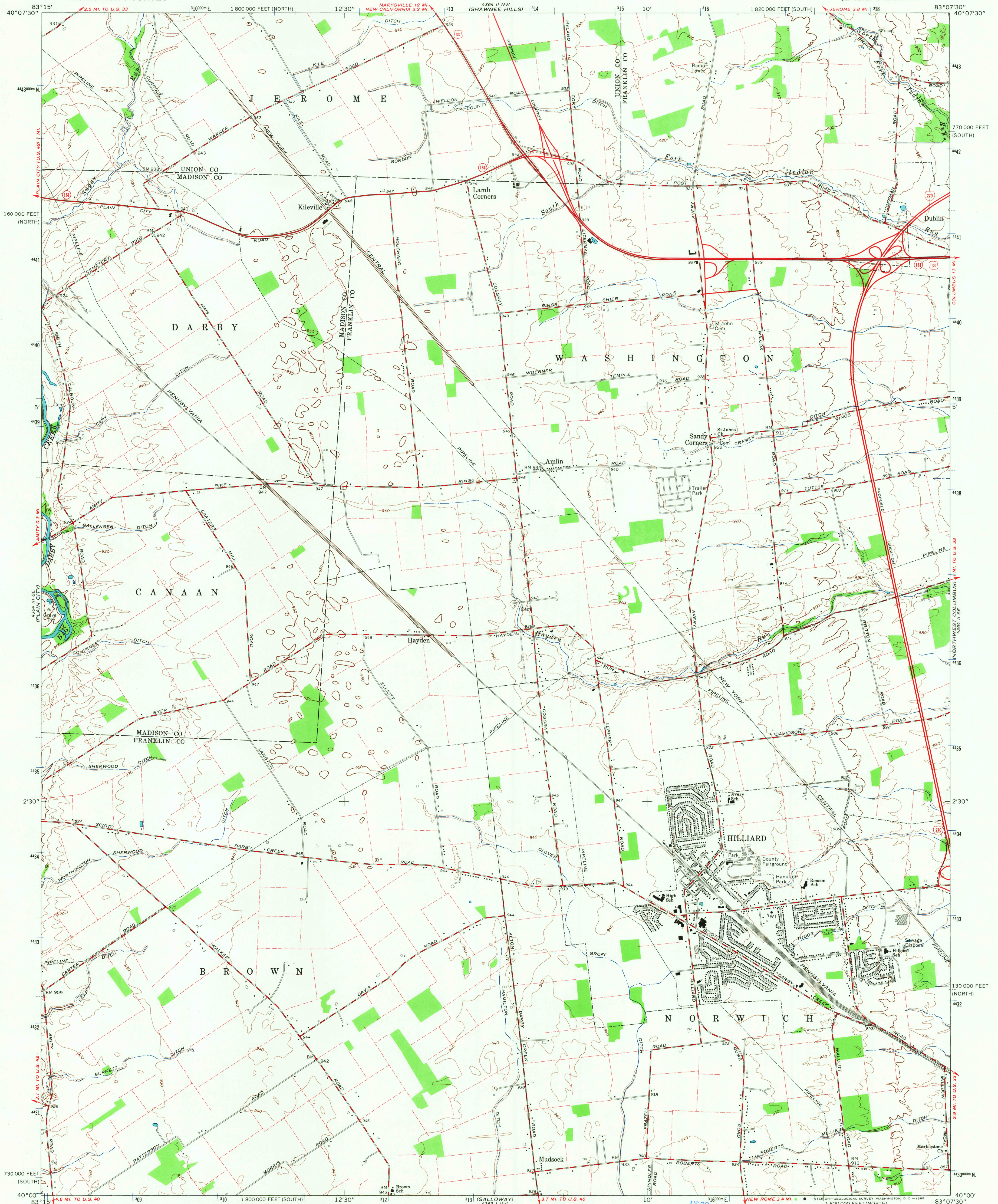
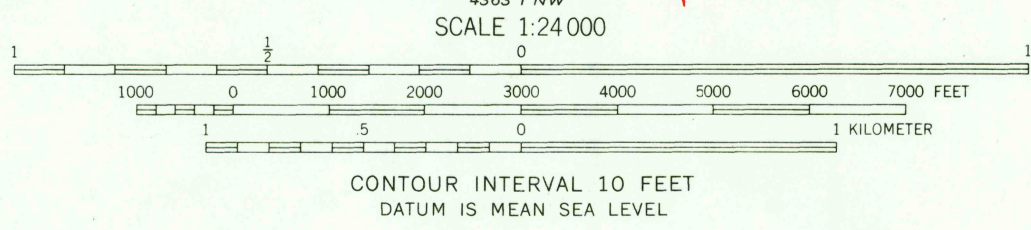


UNITED STATES
DEPARTMENT OF THE INTERIOR
GEOLOGICAL SURVEY

HILLIARD QUADRANGLE
OHIO
7.5 MINUTE SERIES (TOPOGRAPHIC)
SW/4 DUBLIN 15' QUADRANGLE



Mapped, edited, and published by the Geological Survey
Revised in cooperation with State of Ohio agencies
Control by USGS and USC&GS
Topography by photogrammetric methods from aerial
photographs taken 1953 and planimetric surveys 1954. Revised 1966
Polyconic projection. 1927 North American datum
10,000-foot grids based on Ohio coordinate system,
south and north zones
1000-meter Universal Transverse Mercator grid ticks,
zone 17, shown in blue
Fine red dashed lines indicate selected fence and field lines where
generally visible on aerial photographs. This information is unchecked
Entire map lies within the Virginia Military District



ROAD CLASSIFICATION
Heavy-duty ——— Light-duty ———
Medium-duty ——— Unimproved dirt ———
○ Interstate Route ○ U.S. Route ○ State Route

USGS
Historical File
Topographic Division



U.S.G.S.
FIND COPY
TOPOGRAPHIC DIVISION
HISTORICAL

HILLIARD, OHIO
SW/4 DUBLIN 15' QUADRANGLE
N4000-W8307.5/7.5

1966
AMS 4364 II SW-SERIES V852

3360
APR 23 1968
Rev.