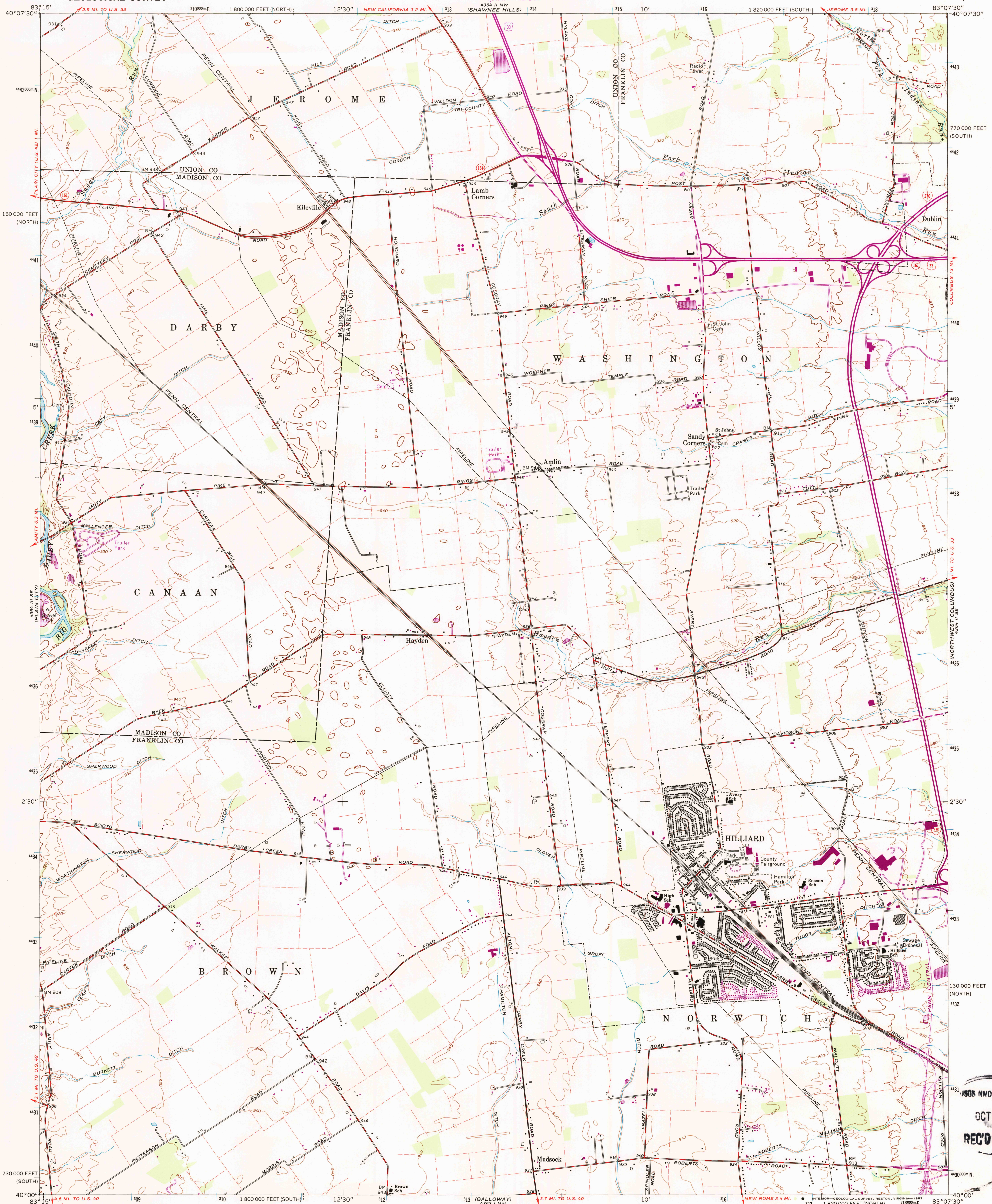


UNITED STATES  
DEPARTMENT OF THE INTERIOR  
GEOLOGICAL SURVEY

HILLIARD QUADRANGLE  
OHIO  
7.5 MINUTE SERIES (TOPOGRAPHIC)



1968 NMD HISTORICAL MAP  
OCT 11 1980  
REC'D FILE COPY

Mapped, edited, and published by the Geological Survey  
Revised in cooperation with State of Ohio agencies  
Control by USGS and USC&GS  
Topography by photogrammetric methods from aerial  
photographs taken 1953 and planimetric surveys 1954. Revised 1966  
Polyconic projection. 1927 North American datum  
10,000-foot grids based on Ohio coordinate system,  
south and north zones  
1000-meter Universal Transverse Mercator grid ticks,  
zone 17, shown in blue  
Fine red dashed lines indicate selected fence and field lines where  
generally visible on aerial photographs. This information is unchecked  
Entire map lies within the Virginia Military District  
Map photorevised 1980 and 1984  
No major culture or drainage changes observed

UTM GRID AND 1973 MAGNETIC NORTH  
DECLINATION AT CENTER OF SHEET  
26° 44' M  
1° 24' 25" M  
To place on the predicted North American Datum 1983  
move the projection lines 3 meters south and  
9 meters west as shown by dashed corner ticks

SCALE 1:24,000  
CONTOUR INTERVAL 10 FEET  
NATIONAL GEODETIC DATUM OF 1929  
THIS MAP COMPLIES WITH NATIONAL MAP ACCURACY STANDARDS  
FOR SALE BY U.S. GEOLOGICAL SURVEY  
DENVER, COLORADO 80225, OR RESTON, VIRGINIA 22092  
A FOLDER DESCRIBING TOPOGRAPHIC MAPS AND SYMBOLS IS AVAILABLE ON REQUEST

ROAD CLASSIFICATION  
Heavy-duty ——— Light-duty ———  
Medium-duty ——— Unimproved dirt ———  
Interstate Route ——— U.S. Route ——— State Route ———  
HILLIARD, OHIO  
40083A2-TF-024  
PHOTOINSPECTED 1980 AND 1984  
1966  
PHOTOREVISED 1973  
DMA 4364 II SW-SERIES V852

