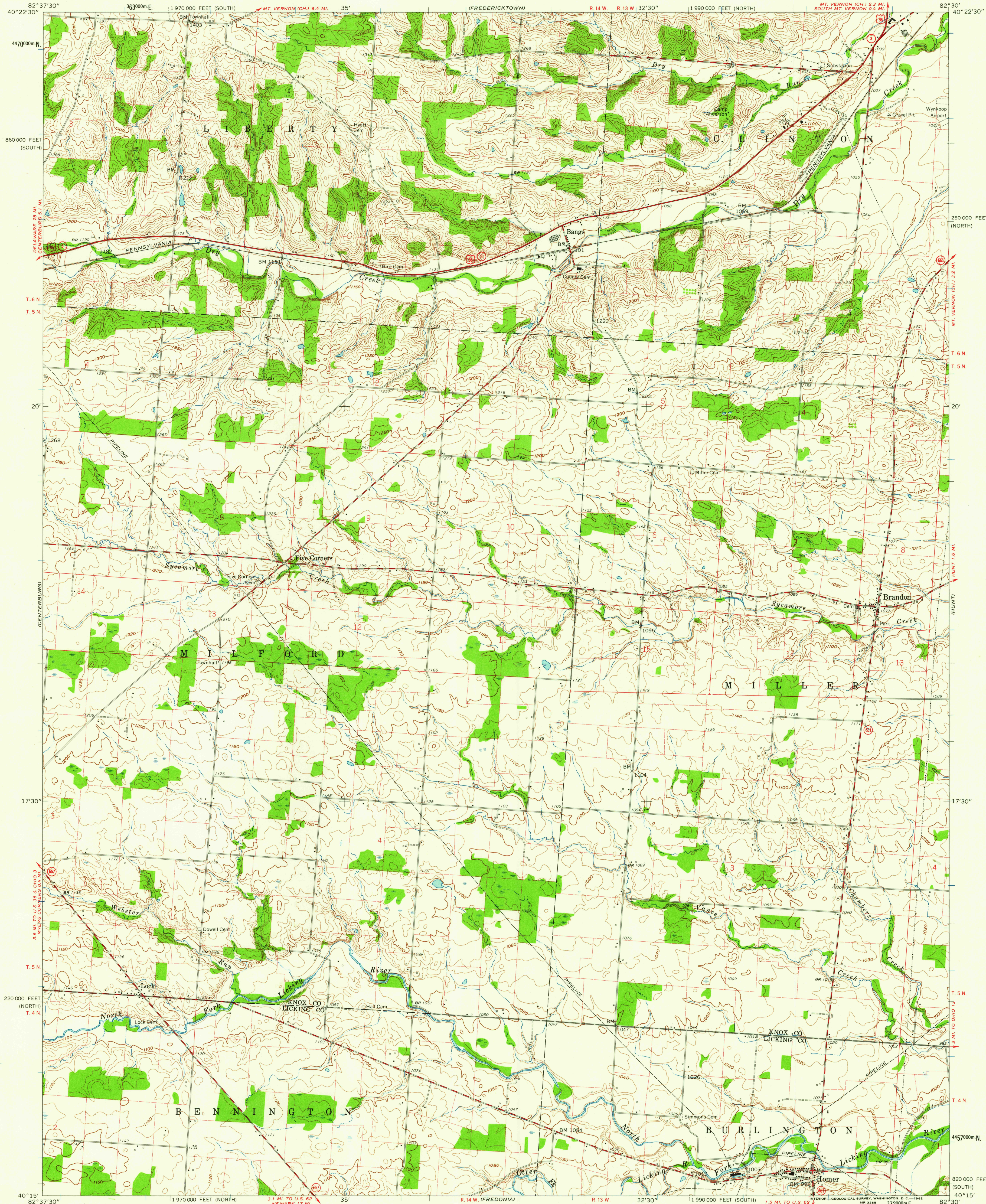


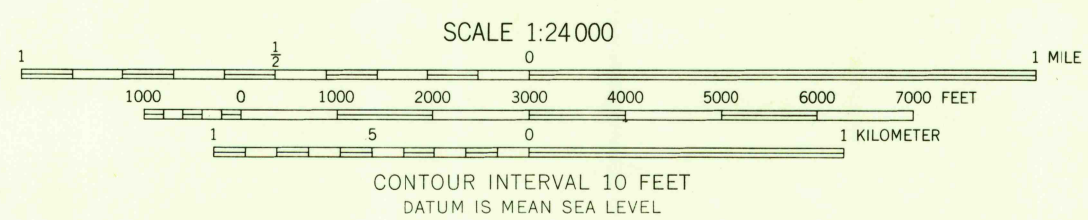
UNITED STATES
DEPARTMENT OF THE INTERIOR
GEOLOGICAL SURVEY

STATE OF OHIO
DEPARTMENT OF HIGHWAYS
DEPARTMENT OF NATURAL RESOURCES
DIVISION OF GEOLOGICAL SURVEY

HOMER QUADRANGLE
OHIO
7.5 MINUTE SERIES (TOPOGRAPHIC)
SE 1/4 FREDERICKTOWN 15' QUADRANGLE



Mapped, edited, and published by the Geological Survey
Control by USGS and USC&GS
Topography by photogrammetric methods from aerial
photographs taken 1959-60. Field checked 1960-61
Polyconic projection 1927 North American datum
10,000-foot grids based on Ohio coordinate system,
north and south zones
1000-meter Universal Transverse Mercator grid ticks,
zone 17, shown in blue
Entire area lies within the United States Military District
Land lines based on the Base Line of the United States
Military District
Fine red dashed lines indicate selected fence and field lines where
generally visible on aerial photographs. This information is unchecked



ROAD CLASSIFICATION
Heavy-duty ——— Light-duty ———
Medium-duty ——— Unimproved dirt ———
U. S. Route ——— State Route ———

HISTORICAL
USGS
Historical File
Topographic Division
HOMER, OHIO
SE 1/4 FREDERICKTOWN 15' QUADRANGLE
N4015-W8230/7.5
1961

THIS MAP COMPLIES WITH NATIONAL MAP ACCURACY STANDARDS
FOR SALE BY U. S. GEOLOGICAL SURVEY, WASHINGTON 25, D. C.
A FOLDER DESCRIBING TOPOGRAPHIC MAPS AND SYMBOLS IS AVAILABLE ON REQUEST

2661
JUL - 3 1961
HISTORICAL

2370