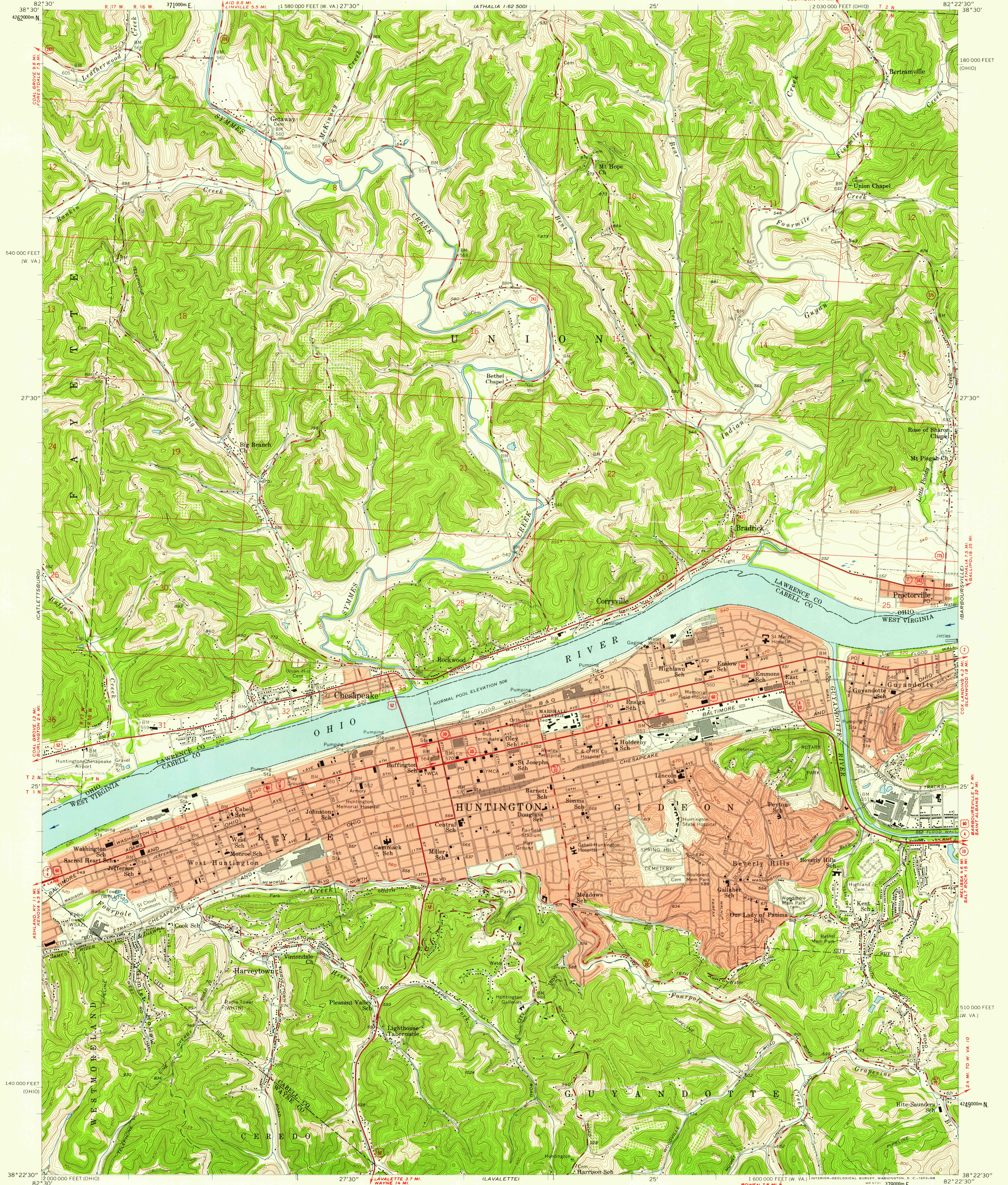


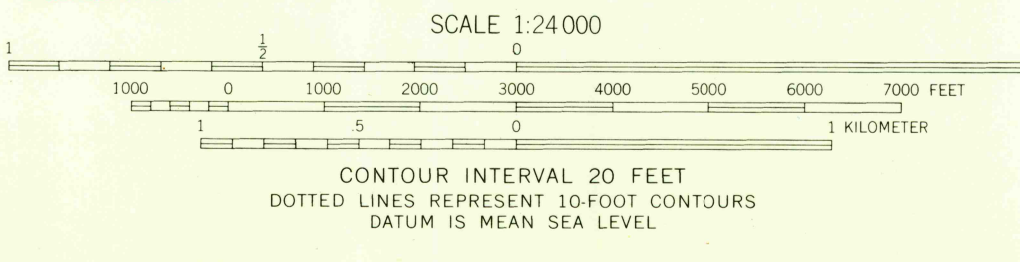
UNITED STATES
DEPARTMENT OF THE INTERIOR
GEOLOGICAL SURVEY

HUNTINGTON QUADRANGLE
OHIO—WEST VIRGINIA
7.5 MINUTE SERIES (TOPOGRAPHIC)
NW/4 HUNTINGTON 15 QUADRANGLE



Mapped, edited, and published by the Geological Survey
Control by USGS, USCGS, and USCE
Topography from aerial photographs by Kersh plotter
Aerial photographs taken 1955. Field check 1957
Polyconic projection. 1927 North American datum
10,000-foot grids based on Ohio coordinate system, south zone,
and West Virginia coordinate system, south zone
1000-meter Universal Transverse Mercator grid ticks, zone 17, shown in blue
The state boundary as shown represents the approximate position of the low
waterline as determined from U. S. Department of the Army, Corps of
Engineers, Ohio River chris, surveyed 1914, and supplementary information
Red tint indicates areas in which only landmark buildings are shown
Unchecked elevations are shown in brown
Unlabelled wells are gas wells
Land lines based on the Ohio River Base

APPROXIMATE MEAN
DECLINATION, 1957



THIS MAP COMPLIES WITH NATIONAL MAP ACCURACY STANDARDS
FOR SALE BY U. S. GEOLOGICAL SURVEY, WASHINGTON 25, D. C.,
A FOLDER DESCRIBING TOPOGRAPHIC MAPS AND SYMBOLS IS AVAILABLE ON REQUEST

Historical File
Topographic Division



USGS
FILE COPY
HISTORICAL

ROAD CLASSIFICATION
Heavy-duty ——— Light-duty ———
Medium-duty ——— Unimproved dirt ———
U. S. Route —○— State Route —○—

HUNTINGTON, OHIO—W. VA.
NW/4 HUNTINGTON 15 QUADRANGLE
N3822.5—W8222.5/7.5

1957

JUN 3 - 1959
4095