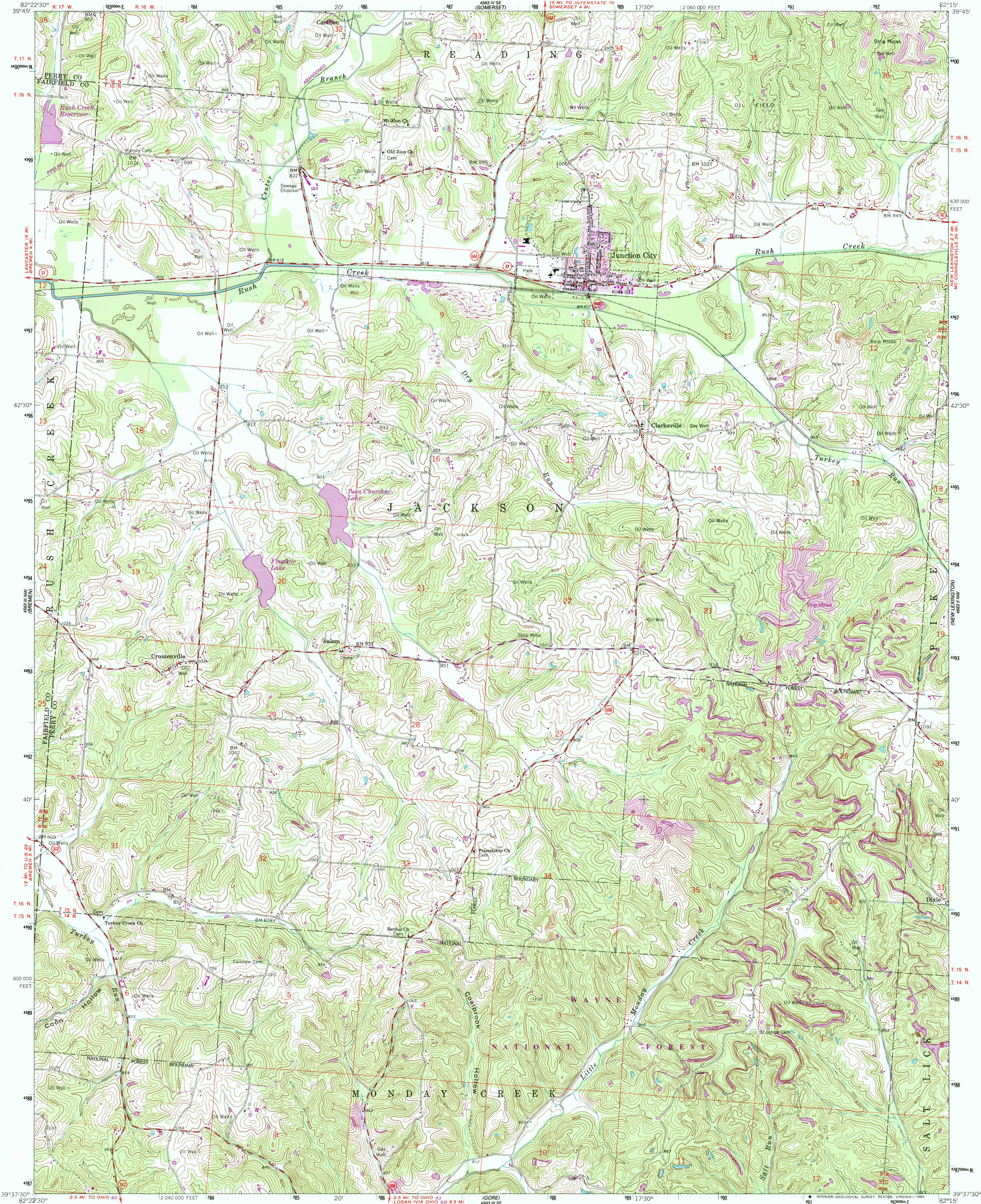
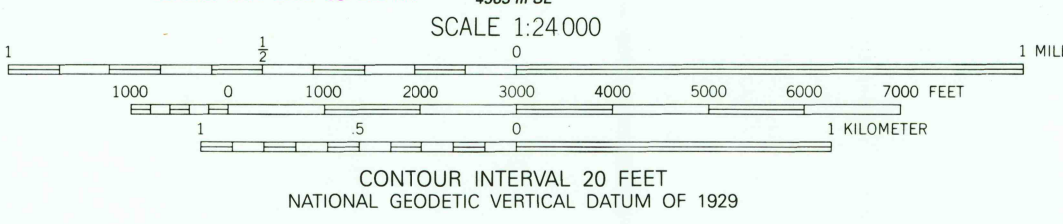
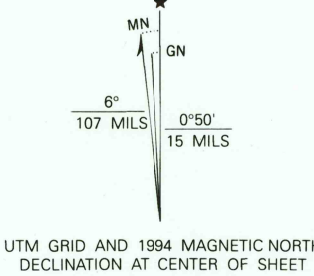


UNITED STATES
DEPARTMENT OF THE INTERIOR
GEOLOGICAL SURVEY

JUNCTION CITY QUADRANGLE
OHIO
7.5 MINUTE SERIES (TOPOGRAPHIC)



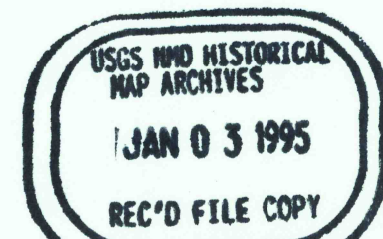
Produced by the United States Geological Survey
Control by USGS and NOS/NOAA
Compiled from aerial photographs taken 1960. Revisions shown in purple and woodland compiled from aerial photographs taken 1991 and 1992 and other sources.
Map edited 1994. Conflicts may exist between some updated features and previously mapped contours.
North American Datum of 1927 (NAD 27). Projection and 10000-foot ticks: Ohio Coordinate System, south zone (Lambert Conformal Conic).
Blue 1000-meter Universal Transverse Mercator ticks, zone 17.
North American Datum of 1983 (NAD 83) is shown by dashed corner ticks. The values of the shift between NAD 27 and NAD 83 for 7.5 minute intersections are obtainable from National Geodetic Survey NADCON software.
There may be private inholdings within the boundaries of the National or State reservations shown on this map.



THIS MAP COMPLIES WITH NATIONAL MAP ACCURACY STANDARDS
FOR SALE BY U.S. GEOLOGICAL SURVEY
DENVER, COLORADO 80225, OR RESTON, VIRGINIA 22092
A FOLDER DESCRIBING TOPOGRAPHIC MAPS AND SYMBOLS IS AVAILABLE ON REQUEST



ROAD CLASSIFICATION	
Primary highway, hard surface	Light-duty road, hard or improved surface
Secondary highway, hard surface	Unimproved road
Interstate Route	U. S. Route
	State Route



JUNCTION CITY, OH
39082-F3TF-024
1961
REVISED 1994
DMA 4563 III NE-SERIES V852