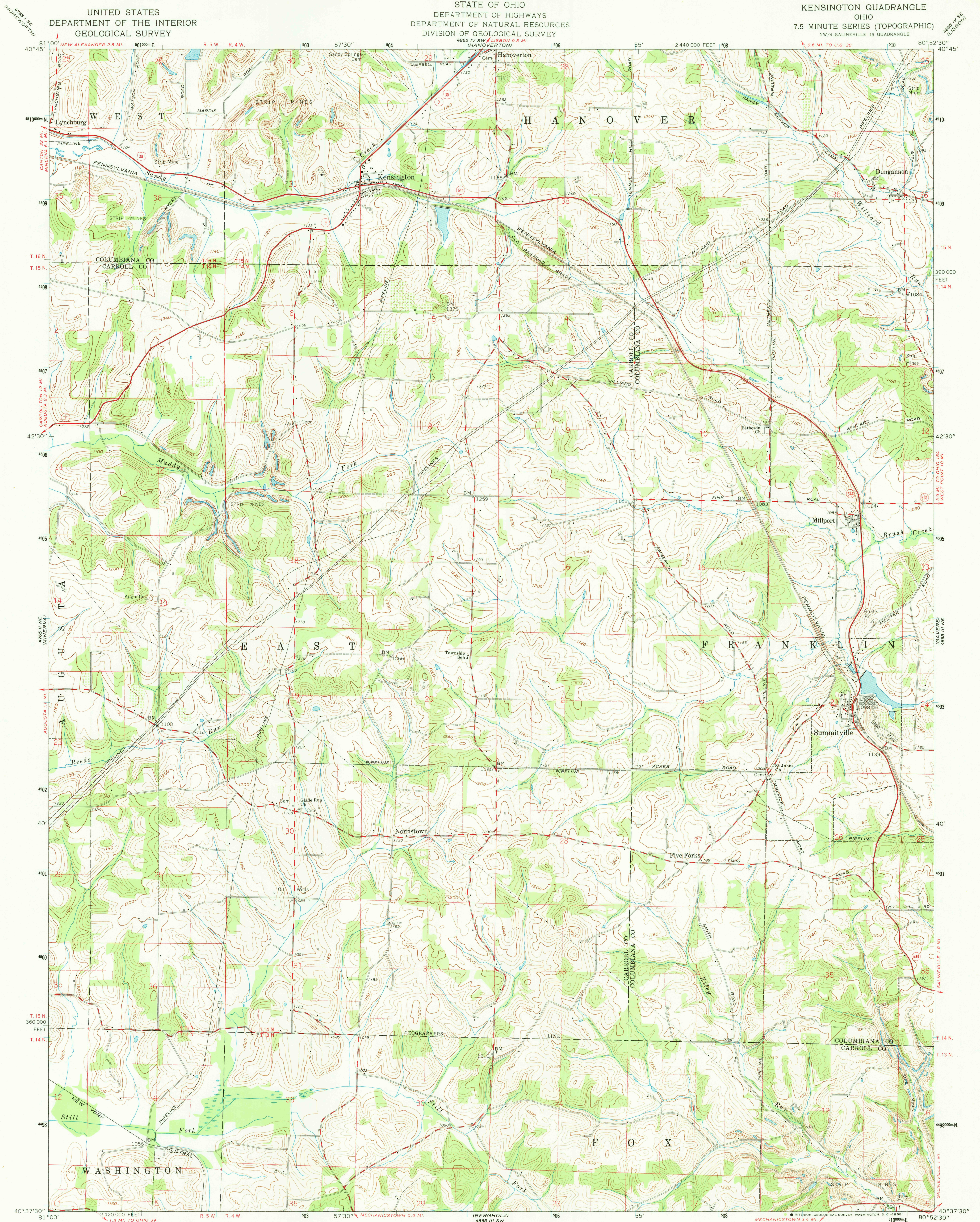


UNITED STATES
DEPARTMENT OF THE INTERIOR
GEOLOGICAL SURVEY

STATE OF OHIO
DEPARTMENT OF HIGHWAYS
DEPARTMENT OF NATURAL RESOURCES
DIVISION OF GEOLOGICAL SURVEY

KENSINGTON QUADRANGLE
OHIO
7.5 MINUTE SERIES (TOPOGRAPHIC)
NW/4 SALINEVILLE 15 QUADRANGLE



Mapped, edited, and published by the Geological Survey

Control by USGS and USC&GS

Topography from aerial photographs by photogrammetric methods

Aerial photographs taken 1958. Field check 1960

Polyconic projection, 1927 North American datum

10,000-foot grid based on Ohio coordinate system, north zone

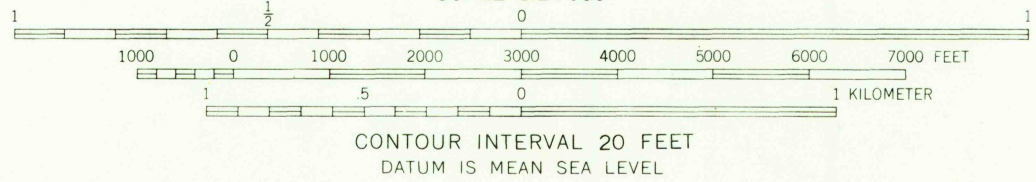
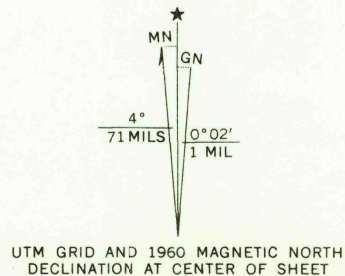
1000-meter Universal Transverse Mercator grid ticks, zone 17, shown in blue

Fine red dashed lines indicate selected fence and field lines where generally visible on aerial photographs. This information is unchecked

Area north of Geographers Line lies within Congress Lands north of Old Seven Ranges

Area south of Geographers Line lies within Old Seven Ranges

Land lines based on the Ohio River Base



THIS MAP COMPLIES WITH NATIONAL MAP ACCURACY STANDARDS
FOR SALE BY U. S. GEOLOGICAL SURVEY, WASHINGTON, D. C. 20242
A FOLDER DESCRIBING TOPOGRAPHIC MAPS AND SYMBOLS IS AVAILABLE ON REQUEST

USGS
Historical File
Topographic Division



ROAD CLASSIFICATION
Heavy-duty ——— Light-duty ———
Medium-duty ——— Unimproved dirt ———
U. S. Route ——— State Route ———

HISTORICAL

KENSINGTON, OHIO

NW/4 SALINEVILLE 15 QUADRANGLE

N4037.5—W8052.5/7.5

1960

AMS 4885 III NW—SERIES V852

U.S.G.S.
FIM COPY
TOPOGRAPHIC DIVISION

HISTORICAL

3530
MAR 26 1969