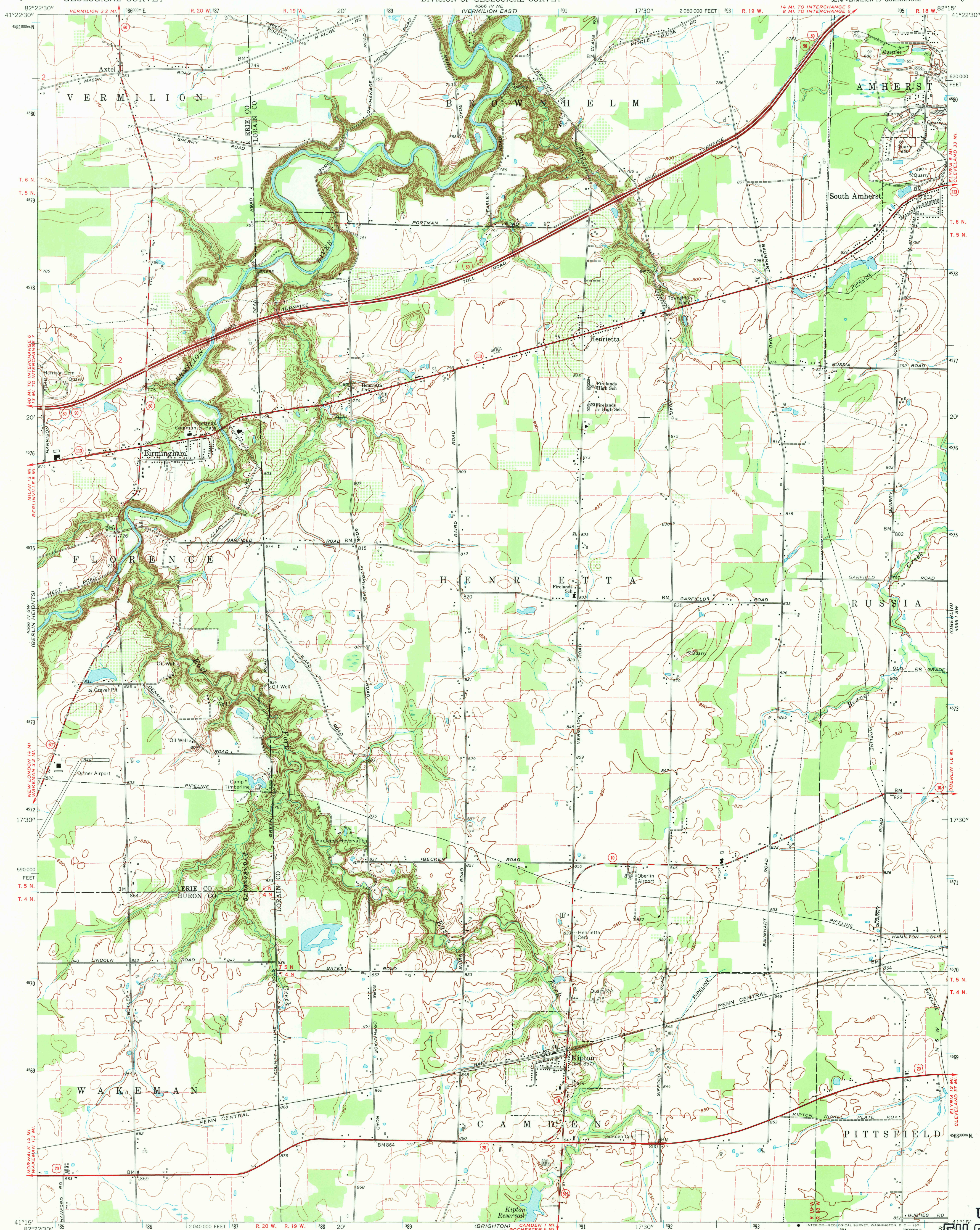


UNITED STATES
DEPARTMENT OF THE INTERIOR
GEOLOGICAL SURVEY

STATE OF OHIO
DEPARTMENT OF HIGHWAYS
DEPARTMENT OF NATURAL RESOURCES
DIVISION OF GEOLOGICAL SURVEY

KIPTON QUADRANGLE
OHIO
7.5 MINUTE SERIES (TOPOGRAPHIC)
SE/4 VERMILION 15' QUADRANGLE

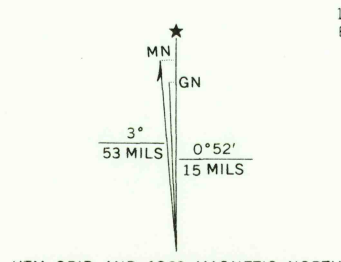


Mapped, edited, and published by the Geological Survey
Control by USGS and USC&GS

Topography by photogrammetric methods from aerial
photographs taken 1956. Field checked 1959. Revised
from aerial photographs taken 1969. Field checked 1969

Polyconic projection. 1927 North American datum
10,000-foot grid based on Ohio coordinate system, north zone
1000-meter Universal Transverse Mercator grid ticks,
zone 17, shown in blue

Fine red dashed lines indicate selected fence and field lines where
generally visible on aerial photographs. This information is unchecked
Entire area lies within the Connecticut Western Reserve
Land lines established by private subdivision of the Connecticut Western Reserve



USGS
Historical File
Topographic Division

ROAD CLASSIFICATION
Primary highway, all weather, hard surface
Secondary highway, all weather, hard surface
Light duty road, all weather, improved surface
Unimproved road, fair or dry weather
Interstate Route
U.S. Route
State Route

KIPTON, OHIO
SE/4 VERMILION 15' QUADRANGLE
N4115-W82157.5
1969
AMS 4566 IV SE-SERIES V852

U.S.G.S.
FILE COPY
TOPOGRAPHIC DIVISION
HISTORICAL

JUN 14 1971