

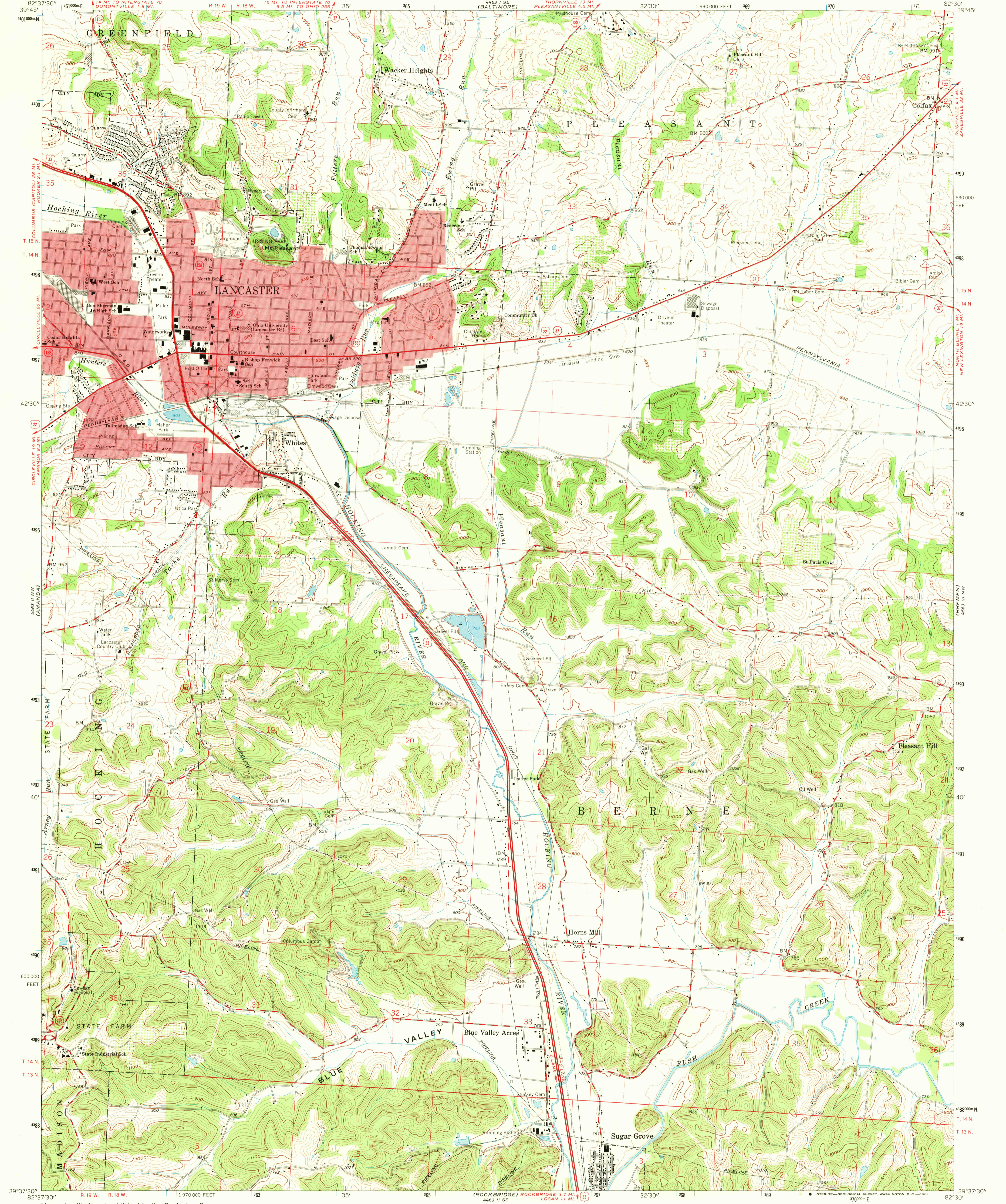
4463 (NW)  
(CARROLL)

UNITED STATES  
DEPARTMENT OF THE INTERIOR  
GEOLOGICAL SURVEY

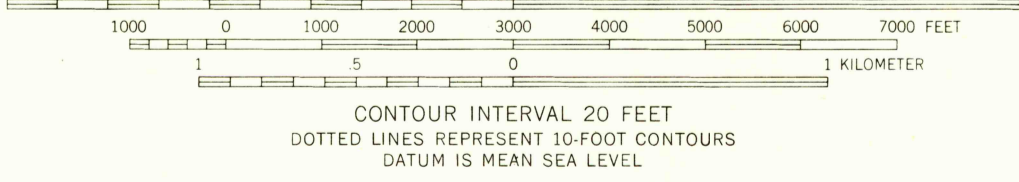
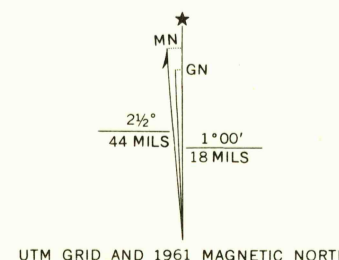
STATE OF OHIO  
DEPARTMENT OF HIGHWAYS  
DEPARTMENT OF NATURAL RESOURCES  
DIVISION OF GEOLOGICAL SURVEY

LANCASTER QUADRANGLE  
OHIO—FAIRFIELD CO.  
7.5 MINUTE SERIES (TOPOGRAPHIC)  
NE 1/4 LANCASTER 15' QUADRANGLE

4463 (SE)  
(RUSHVILLE)



Mapped, edited, and published by the Geological Survey  
Control by USGS and USCGS  
Topography by photogrammetric methods from aerial  
photographs taken 1960. Field checked 1961  
Polyconic projection. 1927 North American datum  
10,000-foot grid based on Ohio coordinate system, south zone  
1000-meter Universal Transverse Mercator grid ticks,  
zone 17, shown in blue  
Red tint indicates areas in which only landmark buildings are shown  
Entire area lies within Congress Lands east of the Scioto River  
Land lines based on the Ohio River Base  
Fine red dashed lines indicate selected fence and field lines where  
generally visible on aerial photographs. This information is unchecked



THIS MAP COMPLIES WITH NATIONAL MAP ACCURACY STANDARDS  
FOR SALE BY U.S. GEOLOGICAL SURVEY, WASHINGTON, D.C. 20242  
A FOLDER DESCRIBING TOPOGRAPHIC MAPS AND SYMBOLS IS AVAILABLE ON REQUEST

USGS  
Historical File  
Topographic Division



U.S.G.S.  
FILE COPY  
TOPOGRAPHIC DIVISION

ROAD CLASSIFICATION  
Heavy-duty ——— Light-duty ———  
Medium-duty ——— Unimproved dirt ———  
U.S. Route ——— State Route ———

LANCASTER, OHIO  
NE 1/4 LANCASTER 15' QUADRANGLE  
N 3937.5—W 8230.7/5

1961  
AMS 4463 II NE—SERIES V852

4463 (SE)  
(LOGAN)

4200  
JUN 26 1968