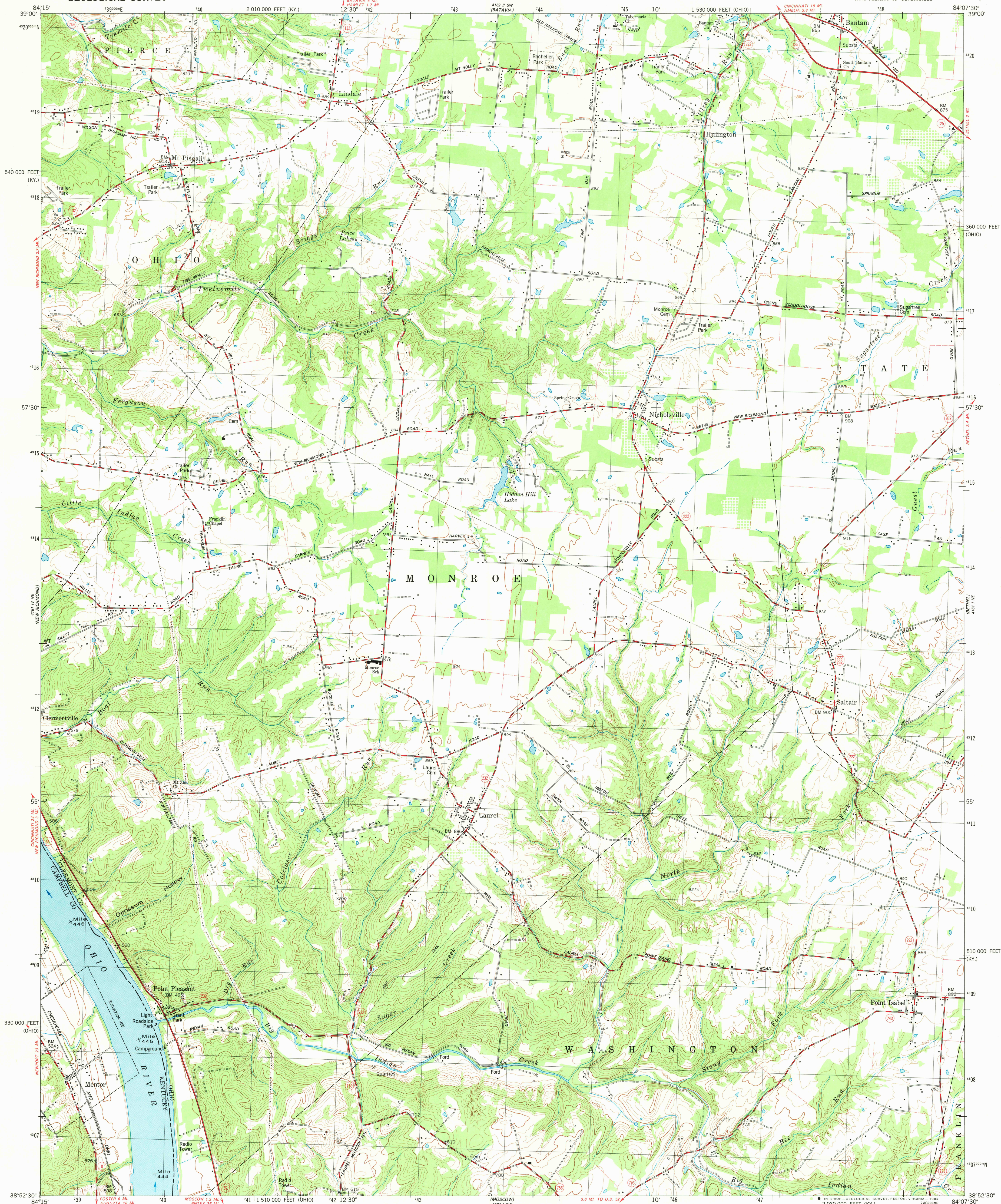


UNITED STATES
DEPARTMENT OF THE INTERIOR
GEOLOGICAL SURVEY

LAUREL QUADRANGLE
OHIO-KENTUCKY
7.5 MINUTE SERIES (TOPOGRAPHIC)



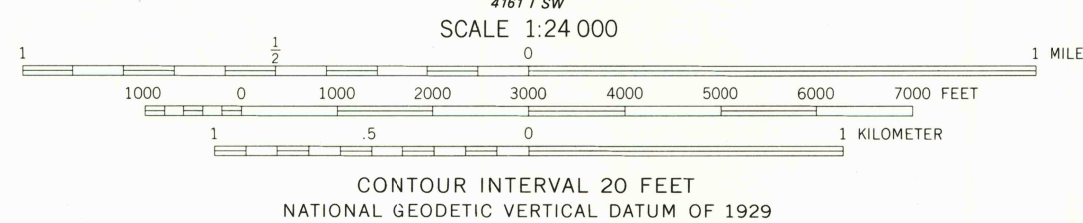
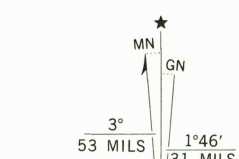
Mapped, edited, and published by the Geological Survey
Revised in cooperation with State of Ohio agencies
and Kentucky Geological Survey

Control by USGS and NOS/NOAA
Topography by photogrammetric methods from aerial photographs
taken 1952. Field checked 1953. Revised from aerial photographs
taken 1977. Map edited 1981

Polyconic projection. 10,000-foot grid ticks based on Ohio
coordinate system, south zone, and Kentucky coordinate system,
north zone. 1000-meter Universal Transverse Mercator grid, zone 16
1927 North American Datum

To place on the predicted North American Datum 1983
move the projection lines 3 meters south and
7 meters west as shown by dashed corner ticks

Fine red dashed lines indicate selected fence and field lines where
generally visible on aerial photographs. This information is unchecked
The state boundary as shown represents the approximate position of the low
water line as determined from U. S. Corps of Engineers Ohio River
charts, surveyed 1913 and 1914, and supplemental information
Ohio area lies within the Virginia Military District



THIS MAP COMPLIES WITH NATIONAL MAP ACCURACY STANDARDS
FOR SALE BY U. S. GEOLOGICAL SURVEY, RESTON, VIRGINIA 22092,
KENTUCKY GEOLOGICAL SURVEY, LEXINGTON, KENTUCKY 40506,
AND KENTUCKY DEPARTMENT OF COMMERCE, FRANKFORT, KENTUCKY 40601
A FOLDER DESCRIBING TOPOGRAPHIC MAPS AND SYMBOLS IS AVAILABLE ON REQUEST

ROAD CLASSIFICATION
Primary highway, hard surface ————
Secondary highway, hard surface ————
Unimproved road ————
Interstate Route ————
U. S. Route ————
State Route ————

LAUREL, OHIO-KY.
NW/4 FELICITY 19 QUADRANGLE
N3852.5-W8407.5/7.5

1981

DMA 4161 1 NW-SERIES V852

RETURN TO:
USGS AND HISTORICAL MAP ARCHIVES

JAN 7 1982

2250