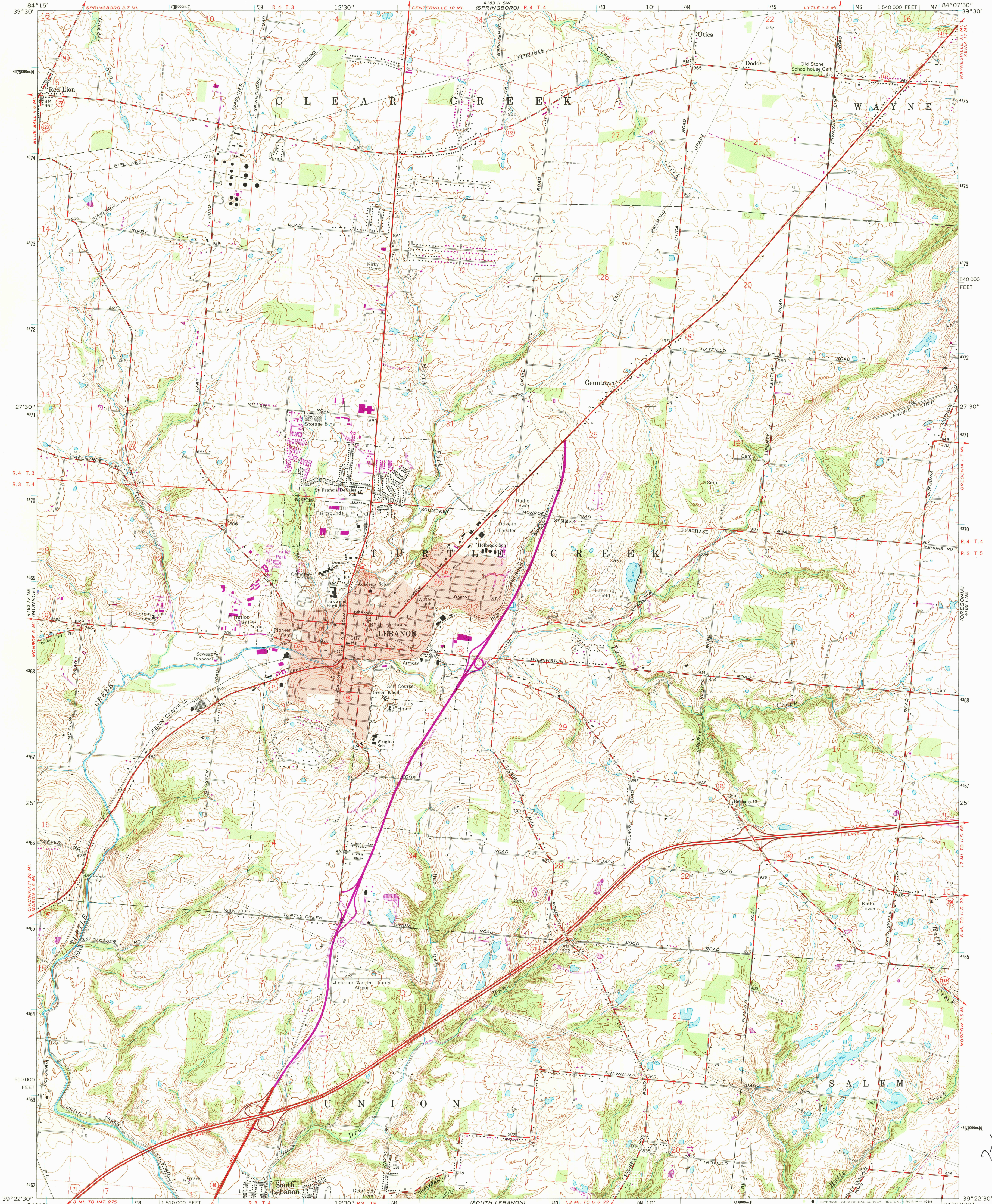


UNITED STATES  
DEPARTMENT OF THE INTERIOR  
GEOLOGICAL SURVEY

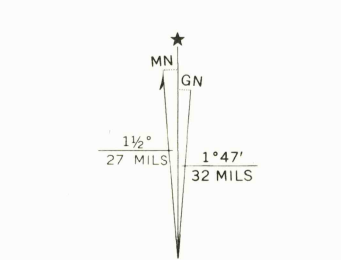
LEBANON QUADRANGLE  
OHIO—WARREN CO.  
7.5 MINUTE SERIES (TOPOGRAPHIC)



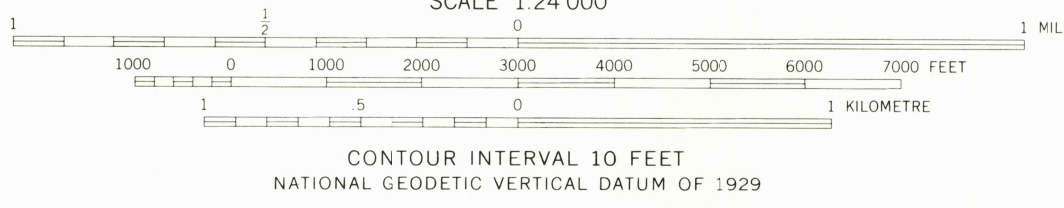
Mapped, edited, and published by the Geological Survey  
in cooperation with the Army Map Service  
Revised in cooperation with State of Ohio agencies  
Control by USGS and NOS/NOAA

Topography by photogrammetric methods from aerial  
photographs taken 1954. Field checked 1955. Revised 1966  
Polyconic projection. 1927 North American datum  
10,000-foot grid based on Ohio coordinate system, south zone  
1000 metre Universal Transverse Mercator grid ticks,  
zone 16, shown in blue

Fine red dashed lines indicate selected fence and field lines where  
generally visible on aerial photographs. This information is unchecked  
Red tint indicates area in which only landmark buildings are shown  
Entire area lies within the Between the Miamis  
Land lines based on the Great Miami River Base  
dotted land lines established by private subdivision  
of the Symmes Purchase



Map photinspected 1979  
No major culture or drainage changes observed



THIS MAP COMPLIES WITH NATIONAL MAP ACCURACY STANDARDS  
FOR SALE BY U. S. GEOLOGICAL SURVEY, RESTON, VIRGINIA 22092  
A FOLDER DESCRIBING TOPOGRAPHIC MAPS AND SYMBOLS IS AVAILABLE ON REQUEST



QUADRANGLE LOCATION

| ROAD CLASSIFICATION |                 |
|---------------------|-----------------|
| Heavy duty          | Light-duty      |
| Medium-duty         | Unimproved dirt |
| Interstate Route    | U. S. Route     |
|                     | State Route     |

LEBANON, OHIO  
PHOTOINSPECTED 1979  
N3922.5—W8407.5/7.5

1966  
PHOTOREVISED 1974  
AMS 4162 1 NW—SERIES Y852

Revisions shown in purple compiled in cooperation with  
State of Ohio agencies from aerial photographs taken  
1974. This information not field checked.

RETURN TO:  
USGS AND HISTORICAL MAP ARCHIVES

2-18-84

PLEASANT PLAIN