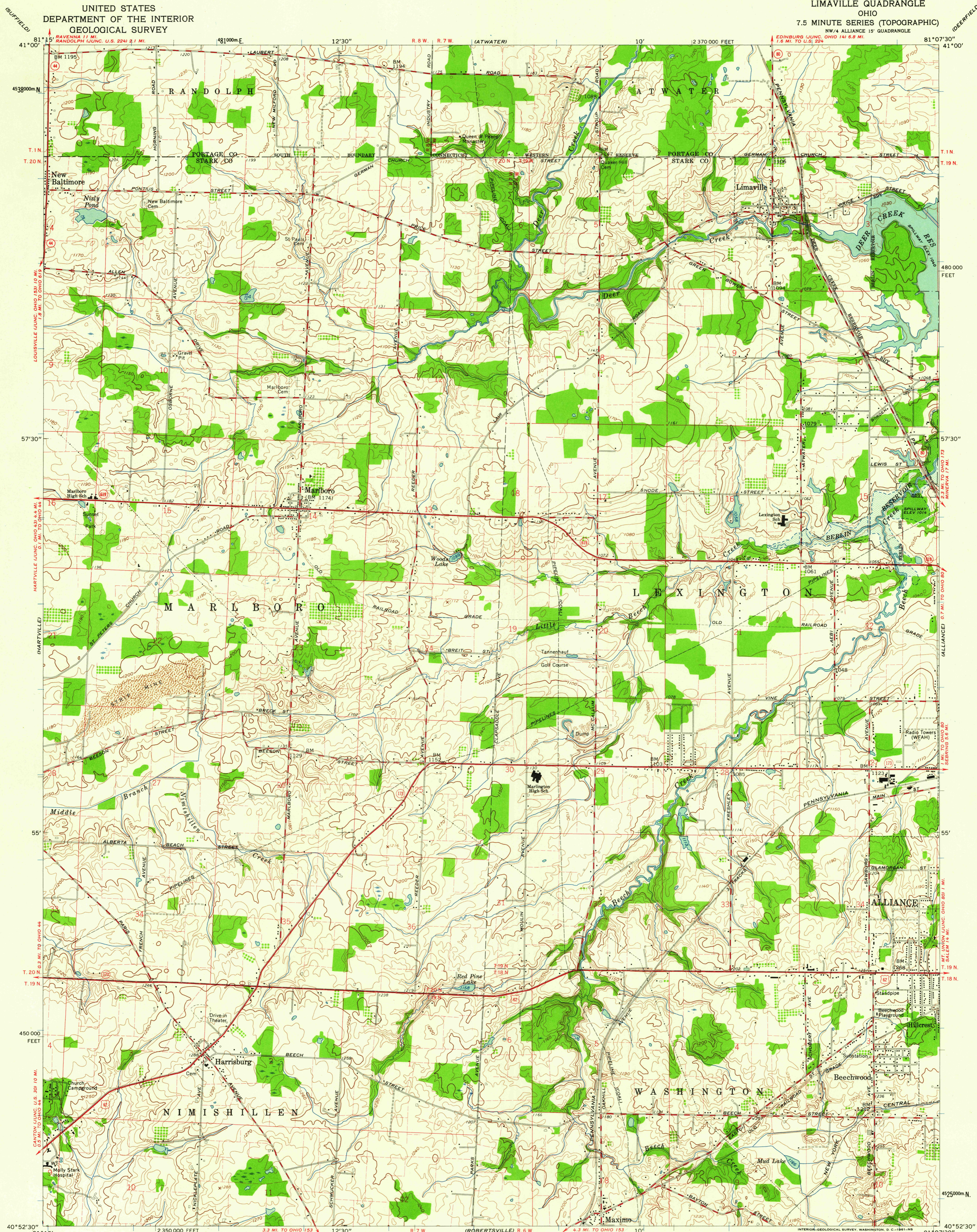


UNITED STATES
DEPARTMENT OF THE INTERIOR
GEOLOGICAL SURVEY

LIMAVILLE QUADRANGLE
OHIO
7.5 MINUTE SERIES (TOPOGRAPHIC)
NW/4 ALLIANCE 15' QUADRANGLE



Mapped, edited, and published by the Geological Survey

Control by USGS and USC&GS

Topography from aerial photographs by photogrammetric methods
Aerial photographs taken 1952. Field check 1960

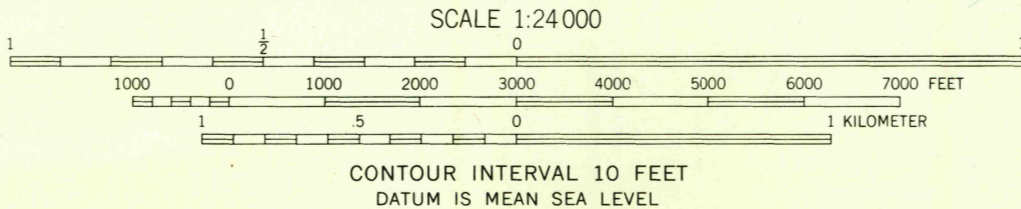
Polyconic projection. 1927 North American datum
10,000-foot grid based on Ohio coordinate system, north zone
1000-meter Universal Transverse Mercator grid ticks,
zone 17, shown in blue

Fine red dashed lines indicate selected fence and field lines where
generally visible on aerial photographs. This information is unchecked

Land lines within Congress Lands North of Old Seven Ranges
based on Ohio River Base. Land lines within Connecticut
Western Reserve established by private subdivision

Area covered by dashed light blue pattern is subject
to controlled inundation to 1034 feet

APPROXIMATE MEAN
MAGNETIC NORTH
DECLINATION, 1960



THIS MAP COMPLIES WITH NATIONAL MAP ACCURACY STANDARDS
FOR SALE BY U.S. GEOLOGICAL SURVEY, WASHINGTON 25, D. C.
A FOLDER DESCRIBING TOPOGRAPHIC MAPS AND SYMBOLS IS AVAILABLE ON REQUEST

USGS
Historical File
Topographic Division



ROAD CLASSIFICATION
Heavy-duty ——— Light-duty ———
Medium-duty ——— Unimproved dirt ———
U. S. Route ——— State Route ———

U.S.G.S.
FILE COPY
TOPOGRAPHIC DIVISION

LIMAVILLE, OHIO
NW/4 ALLIANCE 15' QUADRANGLE
N4052.5-W8107.5/7.5
1960

NOV 24 1961

2460