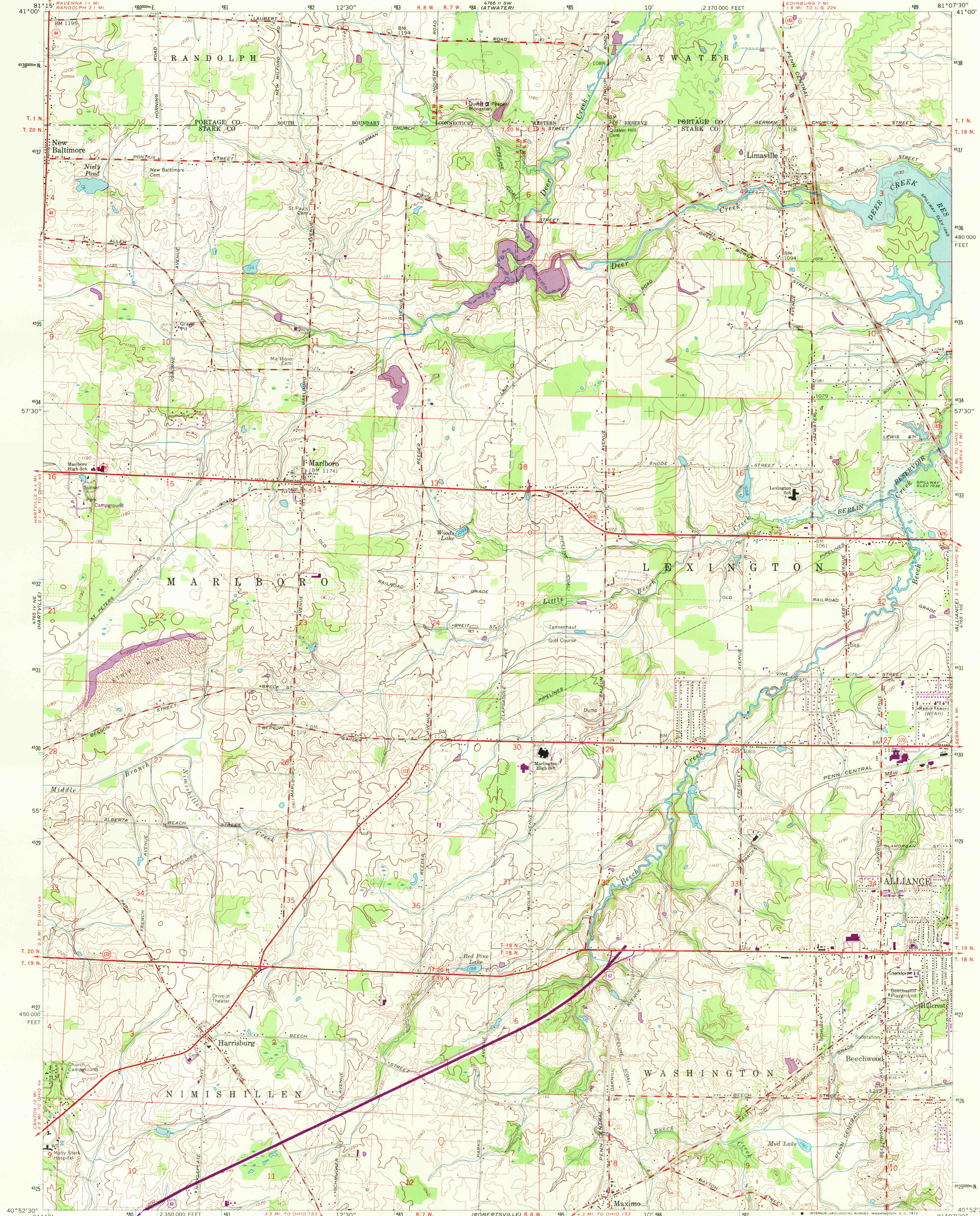


UNITED STATES
DEPARTMENT OF THE INTERIOR
GEOLOGICAL SURVEY

LIMAVILLE QUADRANGLE
OHIO
7.5 MINUTE SERIES (TOPOGRAPHIC)



Mapped, edited, and published by the Geological Survey

Control by USGS and USC&GS

Topography from aerial photographs by photogrammetric methods

Aerial photographs taken 1952. Field check 1960

Polyconic projection. 1927 North American datum

10,000-foot grid based on Ohio coordinate system, north zone

1000-meter Universal Transverse Mercator grid ticks,

zone 17, shown in blue

Fine red dashed lines indicate selected fence and field lines where

generally visible on aerial photographs. This information is unchecked

Land lines within Congress Lands North of Old Seven Ranges

based on Ohio River Base. Land lines within Connecticut

Western Reserve established by private subdivision

Area covered by dashed light blue pattern is subject

to controlled inundation to 1032 feet

SCALE 1:24,000

CONTOUR INTERVAL 10 FEET

DATUM IS MEAN SEA LEVEL

UTM GRID AND 1971 MAGNETIC NORTH

DECLINATION AT CENTER OF SHEET

THIS MAP COMPLIES WITH NATIONAL MAP ACCURACY STANDARDS

FOR SALE BY U. S. GEOLOGICAL SURVEY, WASHINGTON, D. C. 20242

A FOLDER DESCRIBING TOPOGRAPHIC MAPS AND SYMBOLS IS AVAILABLE ON REQUEST

Revisions shown in purple compiled in cooperation with
State of Ohio agencies from aerial photographs taken
1971. This information not field checked

ROAD CLASSIFICATION

Heavy-duty ——— Light-duty ———

Medium-duty ——— Unimproved dirt ———

U. S. Route ——— State Route ———

LIMAVILLE, OHIO

N4052.5—W8107.5/7.5

1960

PHOTOREVISED 1971

AMS 4765 1 NW—SERIES W852

SEP 29 1972

2345

USGS
HISTORICAL FILE
TOPOGRAPHIC DIVISION