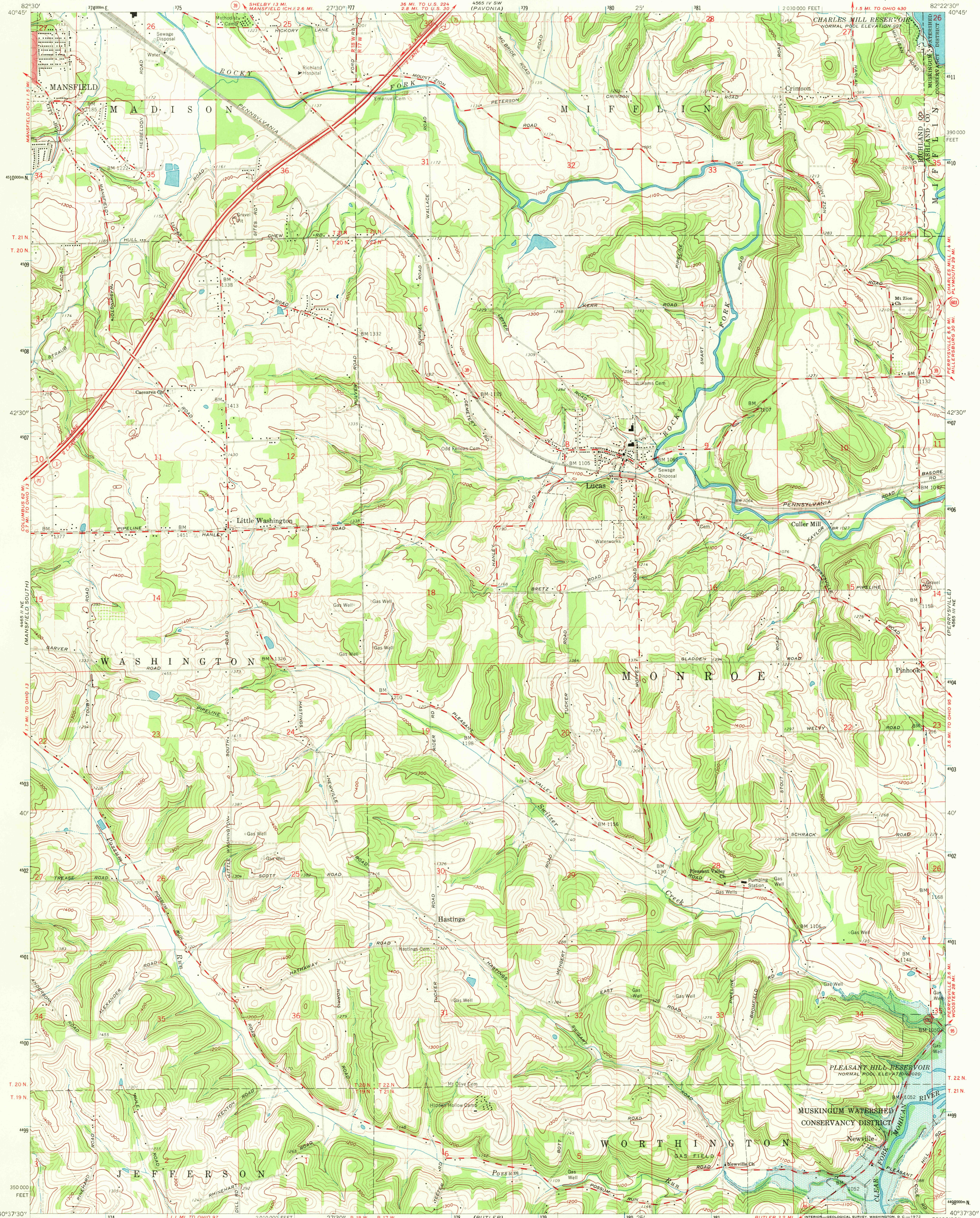


UNITED STATES  
DEPARTMENT OF THE INTERIOR  
GEOLOGICAL SURVEY

STATE OF OHIO  
DEPARTMENT OF HIGHWAYS  
DEPARTMENT OF NATURAL RESOURCES  
DIVISION OF GEOLOGICAL SURVEY

LUCAS QUADRANGLE  
OHIO  
7.5 MINUTE SERIES (TOPOGRAPHIC)



Mapped, edited, and published by the Geological Survey

Control by USGS and USC&GS

Topography by photogrammetric methods from aerial photographs taken 1960. Field checked 1961

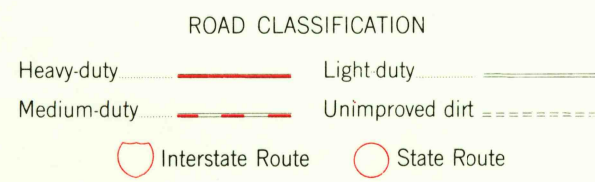
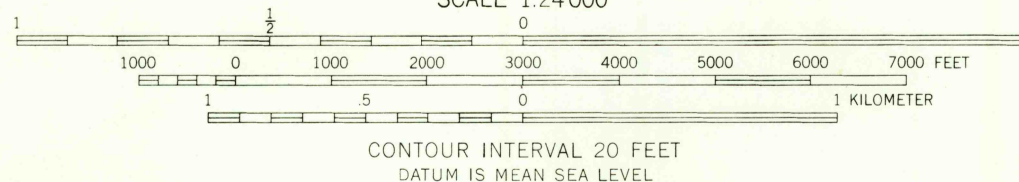
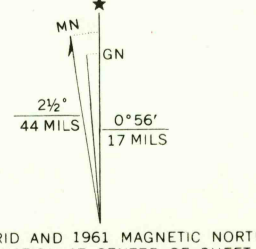
Polyconic projection. 1927 North American datum. 10,000-foot grid based on Ohio coordinate system, north zone. 1000-meter Universal Transverse Mercator grid ticks, zone 17, shown in blue

Areas covered by dashed light-blue pattern are subject to controlled inundation

Red tint indicates area in which only landmark buildings are shown

Entire area lies within Congress Lands north of the Old Seven Ranges Land lines based on the Ohio River Base

Fine red dashed lines indicate selected fence and field lines where generally visible on aerial photographs. This information is unchecked



THIS MAP COMPLIES WITH NATIONAL MAP ACCURACY STANDARDS  
FOR SALE BY U.S. GEOLOGICAL SURVEY, WASHINGTON, D.C. 20242  
A FOLDER DESCRIBING TOPOGRAPHIC MAPS AND SYMBOLS IS AVAILABLE ON REQUEST

LUCAS, OHIO  
N4037.5-W8222.5/7.5

1961

AMS 4565 III NW-SERIES V852

USGS  
Historical File  
Topographic Division

AUG 21 1972