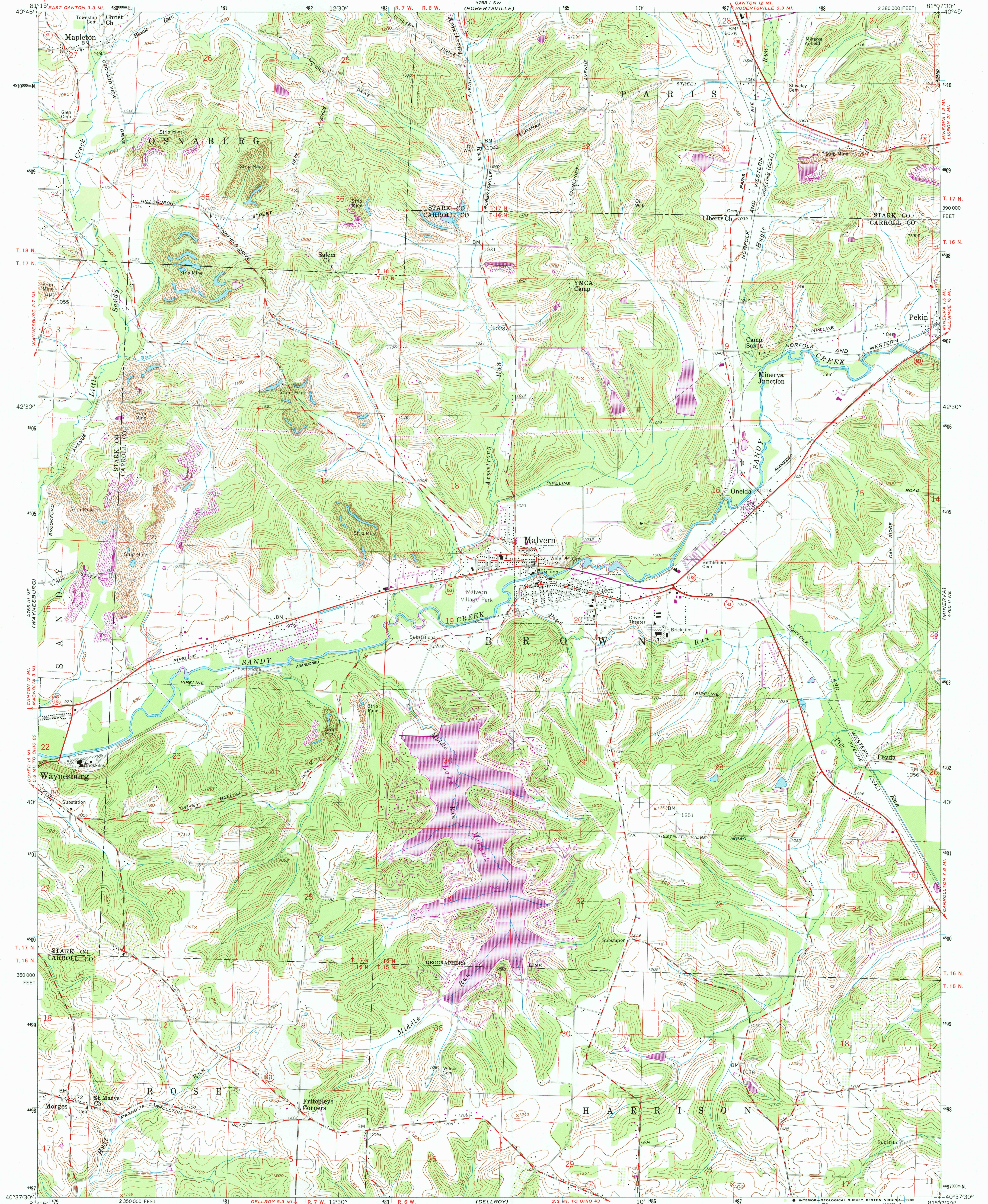
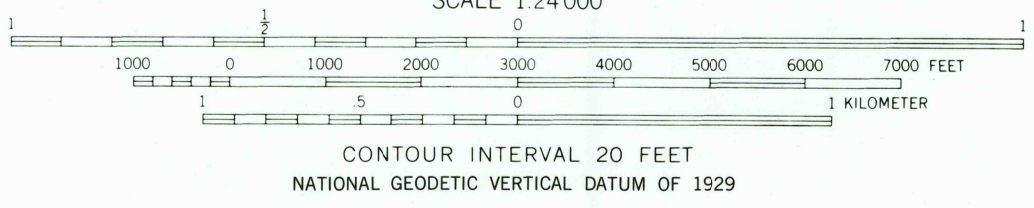


UNITED STATES
DEPARTMENT OF THE INTERIOR
GEOLOGICAL SURVEY

MALVERN QUADRANGLE
OHIO
7.5 MINUTE SERIES (TOPOGRAPHIC)



Mapped, edited, and published by the Geological Survey
Control by USGS and NOS/NOAA
Topography by photogrammetric methods from aerial photographs
taken 1958. Field checked 1960.
Polyconic projection. 10,000-foot grid ticks based on Ohio
coordinate system, north zone
1000-meter Universal Transverse Mercator grid ticks,
zone 17, shown in blue
1927 North American Datum
To place on the predicted North American Datum 1983
move the projection lines 3 meters south and
15 meters west as shown by dashed corner ticks
Fine red dashed lines indicate selected fence and field lines where
generally visible on aerial photographs. This information is unchecked
Land lines based on the Ohio River Base
Area north of Geographers Line lies within Congress Lands
north of Old Seven Ranges
Area south of Geographers Line lies within the Old Seven Ranges



ROAD CLASSIFICATION
Heavy-duty ——— Light-duty ———
Medium-duty ——— Unimproved dirt ———
U. S. Route ——— State Route ———

THIS MAP COMPLIES WITH NATIONAL MAP ACCURACY STANDARDS
FOR SALE BY U. S. GEOLOGICAL SURVEY, RESTON, VIRGINIA 22092
A FOLDER DESCRIBING TOPOGRAPHIC MAPS AND SYMBOLS IS AVAILABLE ON REQUEST

Revisions shown in purple and woodland compiled in cooperation
with State of Ohio agencies from aerial photographs taken
1982 and other sources. This information not field checked
Map edited 1985

MALVERN, OHIO
40081-F2-TF-024

1980
PHOTOREVISED 1985
DMA 4765 II NW - SERIES V852

RETURN TO:
USGS AND HISTORICAL MAP ARCHIVES