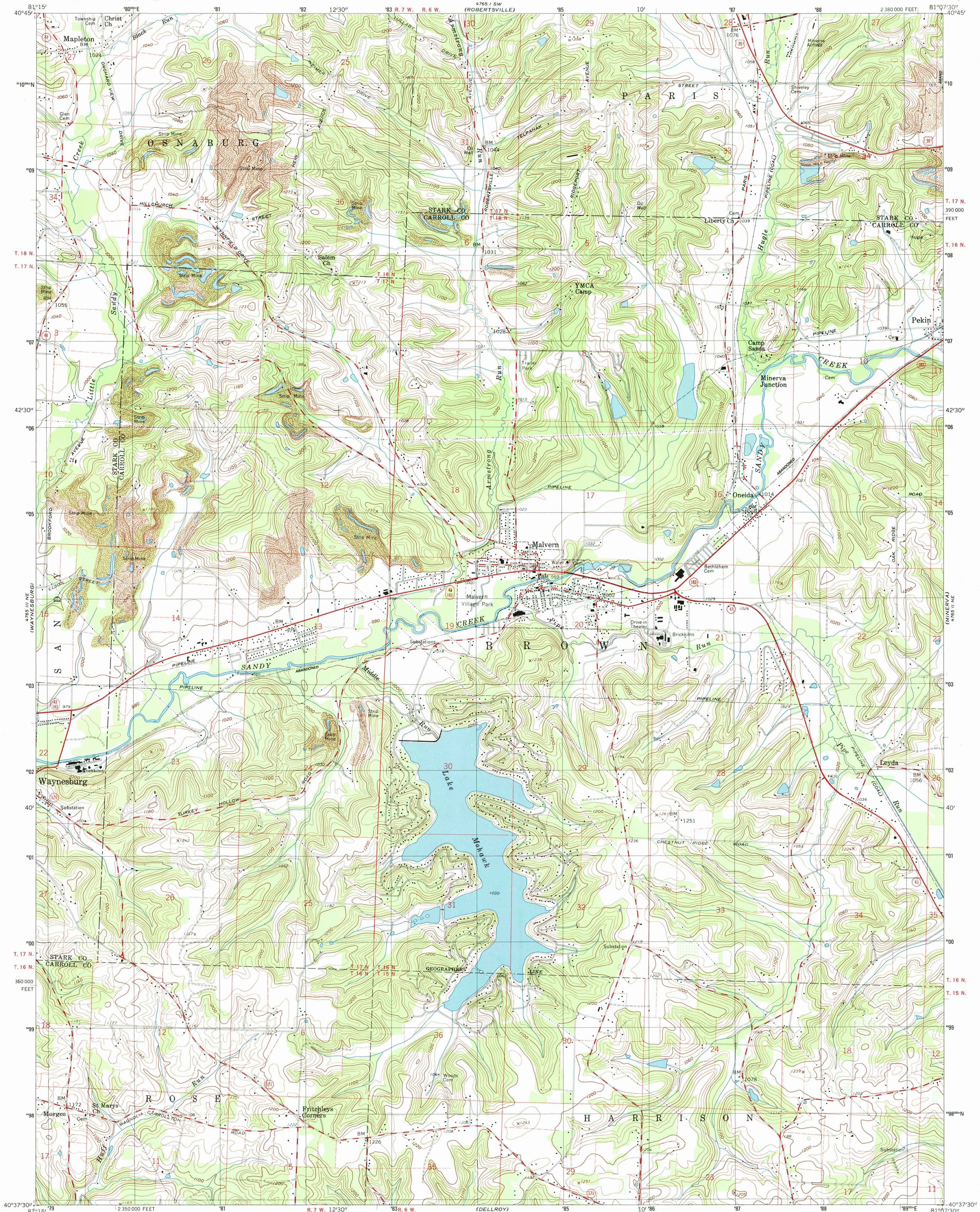
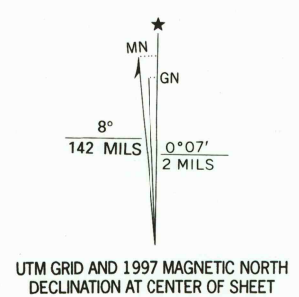


UNITED STATES
DEPARTMENT OF THE INTERIOR
GEOLOGICAL SURVEY

MALVERN QUADRANGLE
OHIO
7.5 MINUTE SERIES (TOPOGRAPHIC)



Produced by the United States Geological Survey
Topography compiled 1958. Planimetry derived from imagery taken 1988. Photospected using imagery dated 1994; no major culture or drainage changes observed. Survey control current as of 1960
Boundaries, other than corporate, verified 1997
North American Datum of 1927 (NAD 27). Projection and 10 000-foot ticks: Ohio coordinate system, north zone (Lambert conformal conic)
1000-meter Universal Transverse Mercator grid, zone 17
North American Datum of 1983 (NAD 83) is shown by dashed corner ticks. The values of the shift between NAD 27 and NAD 83 for 7.5-minute intersections are obtainable from National Geodetic Survey NADCON software
Land lines based on the Ohio River Base
Area north of Geographers Line lies within Congress Lands north of Old Seven Ranges
Area south of Geographers Line lies within the Old Seven Ranges



SCALE 1:24 000
CONTOUR INTERVAL 20 FEET
NATIONAL GEODETIC VERTICAL DATUM OF 1929
TO CONVERT FROM FEET TO METERS, MULTIPLY BY 0.3048



ROAD CLASSIFICATION
Primary highway, hard surface ——— Light-duty road, hard or improved surface ———
Secondary highway, hard surface ——— Unimproved road ———
Interstate Route ——— U. S. Route ——— State Route ———

MALVERN, OHIO

1994

NIMA 4765 II NW - SERIES V852

