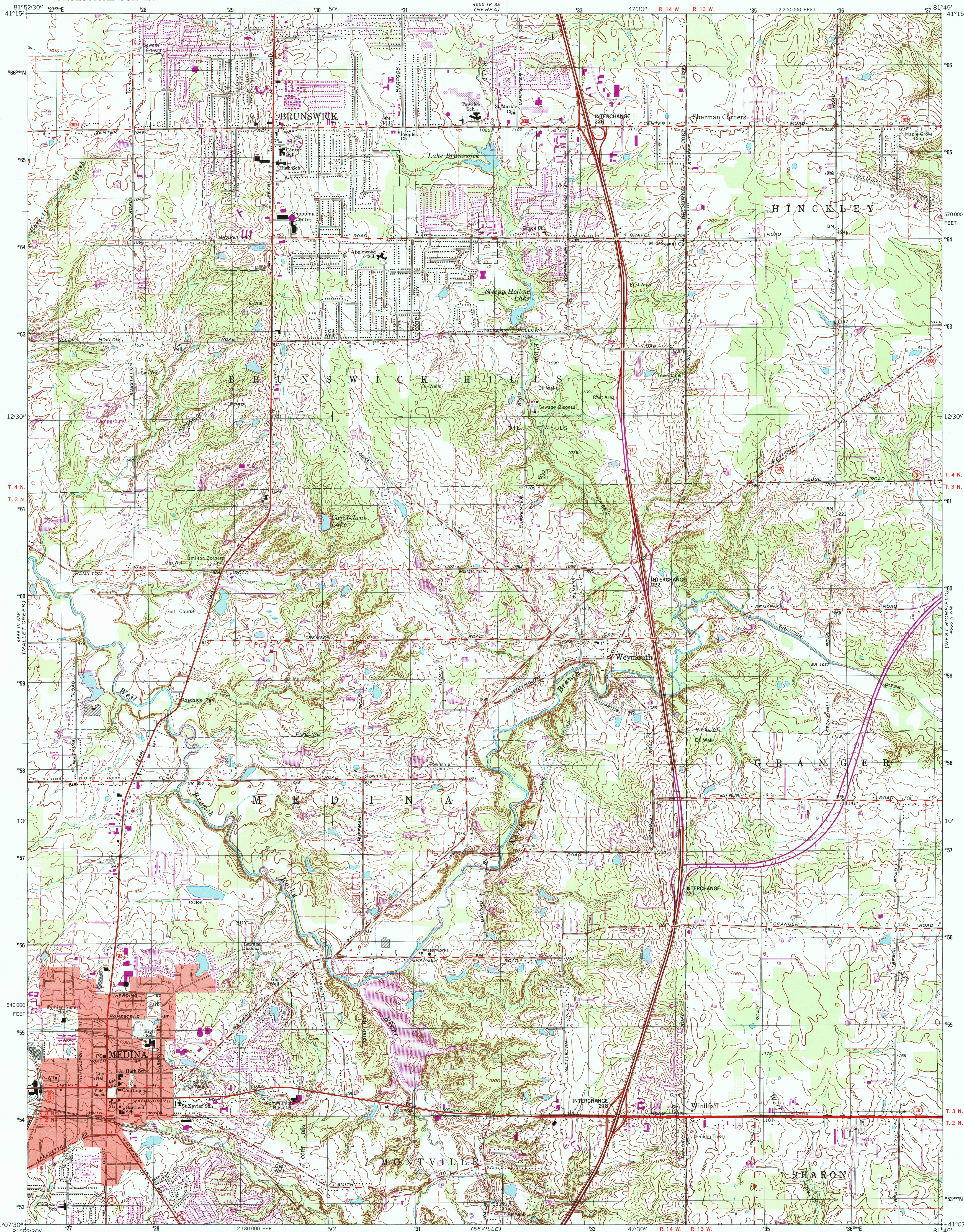
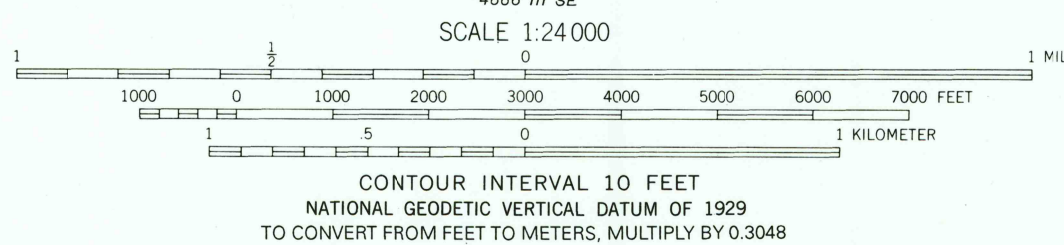
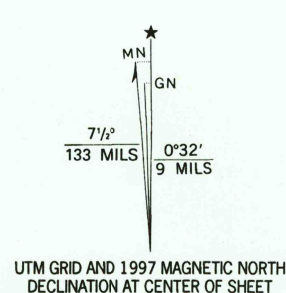


UNITED STATES
DEPARTMENT OF THE INTERIOR
GEOLOGICAL SURVEY

MEDINA QUADRANGLE
OHIO—MEDINA CO.
7.5 MINUTE SERIES (TOPOGRAPHIC)



Produced by the United States Geological Survey
Topography compiled 1952. Planimetry derived from imagery taken 1982. Photomaps using imagery dated 1994; no major culture or drainage changes observed. Survey control current as of 1963 boundaries, other than corporate, revised 1997.
North American Datum of 1927 (NAD 27). Projection and 10,000-foot ticks: Ohio coordinate system, north zone (Lambert conformal conic).
1000-meter Universal Transverse Mercator grid, zone 17
North American Datum of 1983 (NAD 83) is shown by dashed corner ticks. The values of the shift between NAD 27 and NAD 83 for 7.5-minute intersections are obtainable from National Geodetic Survey NADCON software.
Entire area lies within the Connecticut Western Reserve. Dotted land lines established by private subdivision of the Connecticut Western Reserve.
Information shown in purple may not meet USGS content standards and may conflict with previously mapped contours.



ROAD CLASSIFICATION
Primary highway, hard surface ——— Light-duty road, hard or improved surface ———
Secondary highway, hard surface ——— Unimproved road ———
Interstate Route ——— U.S. Route ——— State Route ———

MEDINA, OHIO E2

1994

DMA 4666 III NE—SERIES V852

