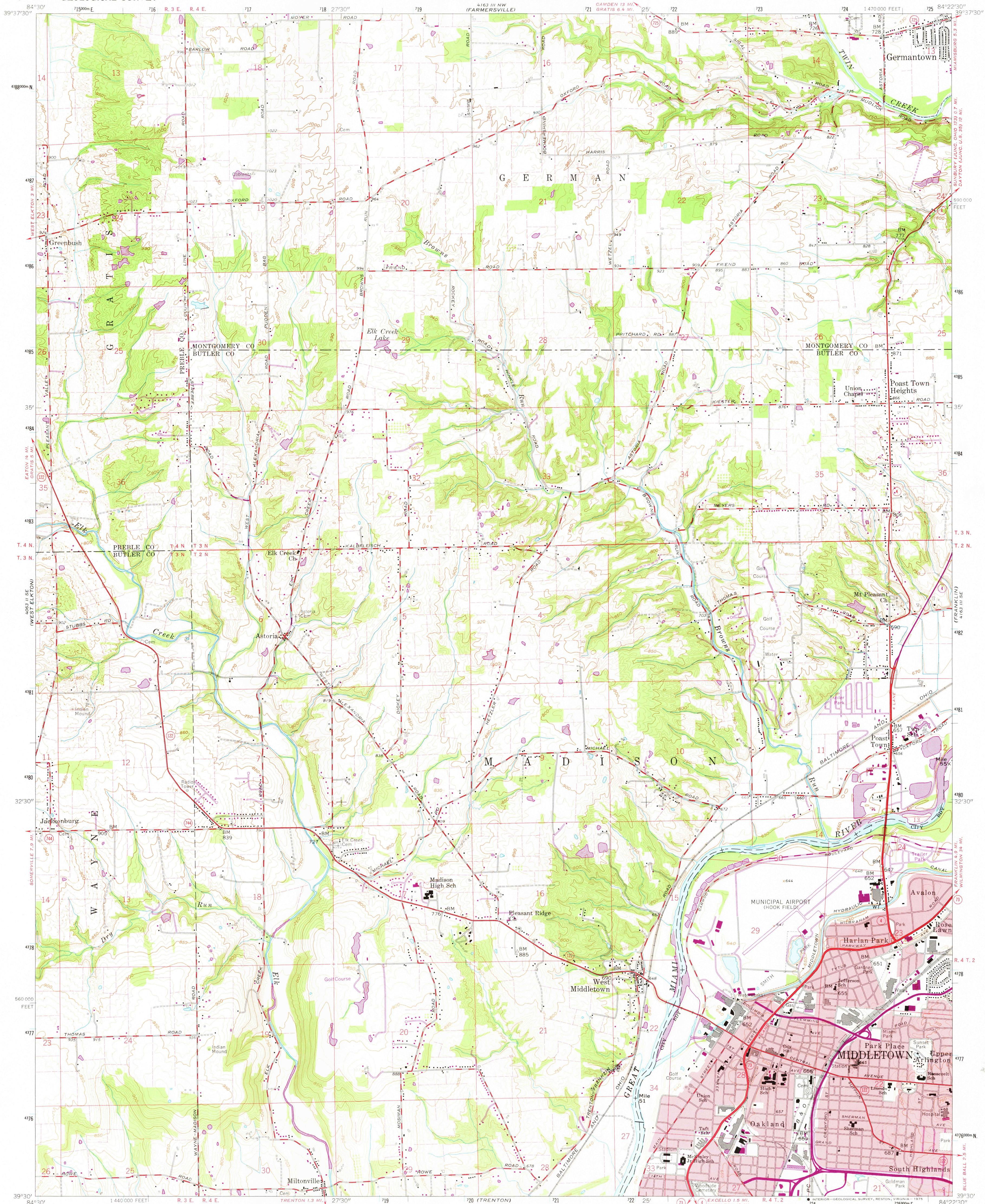


UNITED STATES
DEPARTMENT OF THE INTERIOR
GEOLOGICAL SURVEY

STATE OF OHIO
DEPARTMENT OF TRANSPORTATION
DEPARTMENT OF NATURAL RESOURCES
DIVISION OF GEOLOGICAL SURVEY

MIDDLETOWN QUADRANGLE
OHIO
7.5 MINUTE SERIES (TOPOGRAPHIC)



Mapped, edited, and published by the Geological Survey

Control by USGS and USC&GS

Topography from aerial photographs by photogrammetric methods

Aerial photographs taken 1949 and 1954. Field check 1959

Polyconic projection. 1927 North American datum

10,000-foot grid based on Ohio coordinate system, south zone

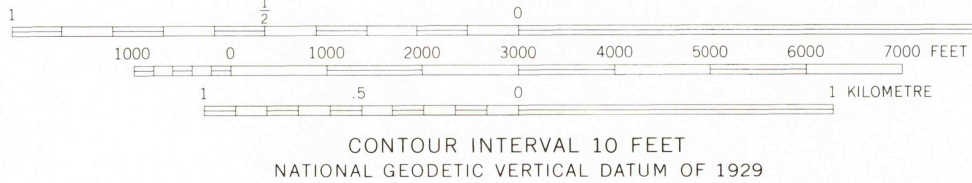
1000-metre Universal Transverse Mercator grid ticks, zone 16, shown in blue

Fine red dashed lines indicate selected fence and field lines

visible on aerial photographs. This information is unchecked

Red tint indicates area in which only landmark buildings are shown

Land lines based on the Great Miami River Base



THIS MAP COMPLIES WITH NATIONAL MAP ACCURACY STANDARDS
FOR SALE BY U. S. GEOLOGICAL SURVEY, RESTON, VIRGINIA 22092
A FOLDER DESCRIBING TOPOGRAPHIC MAPS AND SYMBOLS IS AVAILABLE ON REQUEST

ROAD CLASSIFICATION
Heavy-duty ——— Light-duty ———
Medium-duty ——— Unimproved dirt ———
State Route —○—

USGS
Historical File
Topographic Division

MIDDLETOWN, OHIO

N 3930—W 8422.5/7.5

1959
PHOTOREVISED 1970 AND 1974
AMS 4163 III SW—SERIES V852

APR 14 1975