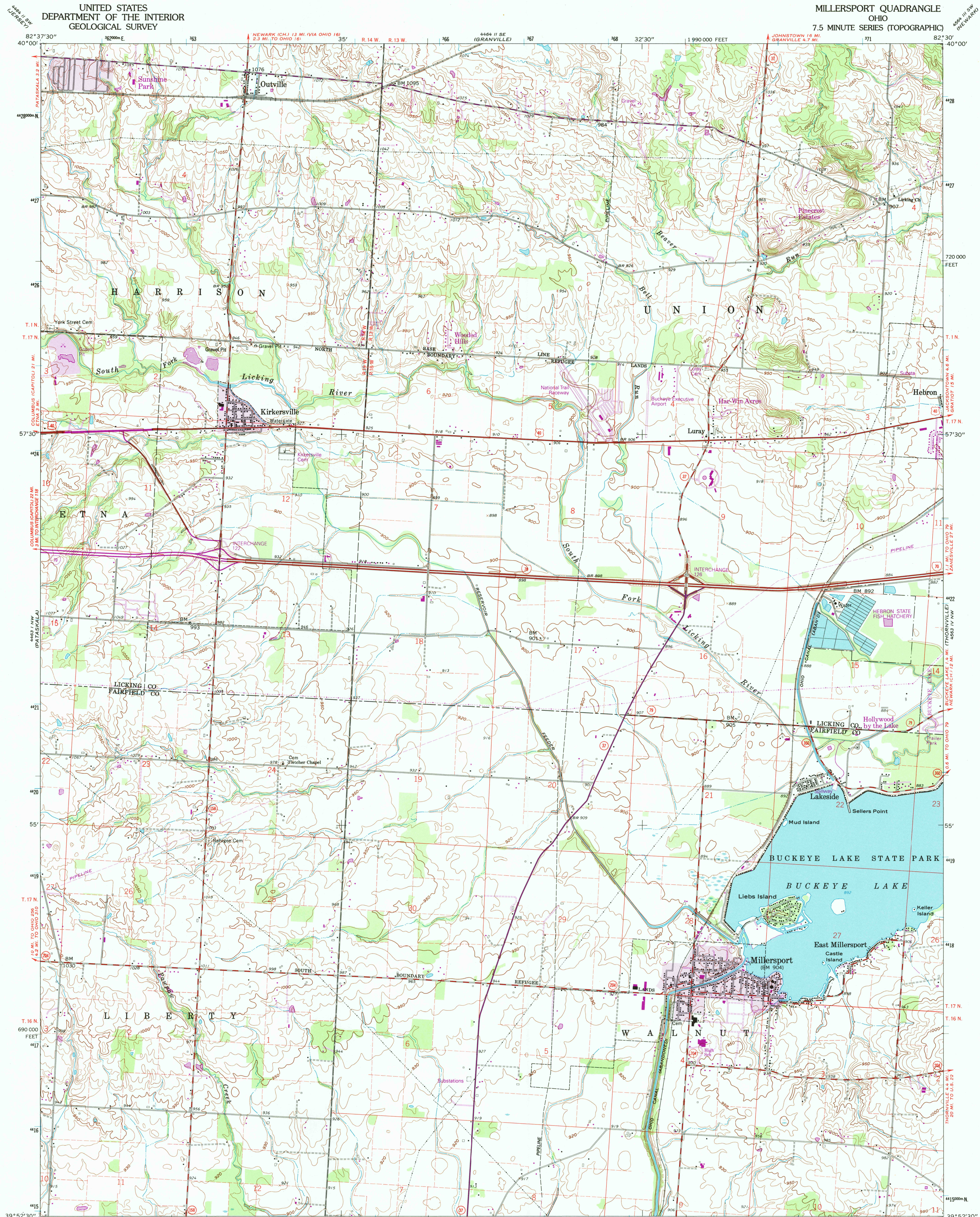
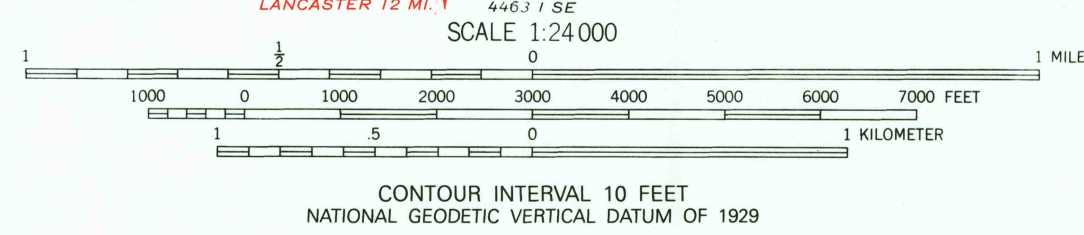
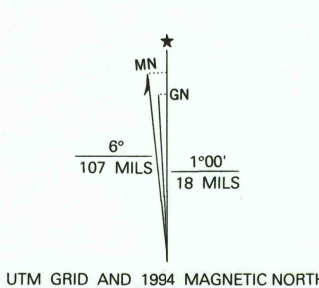


UNITED STATES  
DEPARTMENT OF THE INTERIOR  
GEOLOGICAL SURVEY

MILLERSPORT QUADRANGLE  
OHIO  
7.5 MINUTE SERIES (TOPOGRAPHIC)



Produced by the United States Geological Survey  
Control by USGS and NOS/NOAA  
Compiled from aerial photographs taken 1959 and 1960. Revisions shown in purple and woodland compiled from aerial photographs taken 1991 and 1992 and other sources. Map edited 1994.  
Conflicts may exist between some updated features and previously mapped contours  
North American Datum of 1927 (NAD 27). Projection and 10000-foot ticks - Ohio Coordinate System, south zone (Lambert Conformal Conic)  
Blue 1000-meter Universal Transverse Mercator ticks, zone 17  
North American Datum of 1983 (NAD 83) is shown by dashed corner ticks. The values of the shift between NAD 27 and NAD 83 for 7.5-minute intersections are obtainable from National Geodetic Survey NADCON software  
There may be private inholdings within the boundaries of the National or State reservations shown on this map



THIS MAP COMPLIES WITH NATIONAL MAP ACCURACY STANDARDS  
FOR SALE BY U.S. GEOLOGICAL SURVEY  
DENVER, COLORADO 80225, OR RESTON, VIRGINIA 22092  
A FOLDER DESCRIBING TOPOGRAPHIC MAPS AND SYMBOLS IS AVAILABLE ON REQUEST



Primary highway, hard surface  
Secondary highway, hard surface  
Light-duty road, hard or improved surface  
Unimproved road  
Interstate Route  
U. S. Route  
State Route

MILLERSPORT, OH  
39082-H6-TF-024  
1961  
REVISED 1994  
DMA 4463 1 NE-SERIES V852

