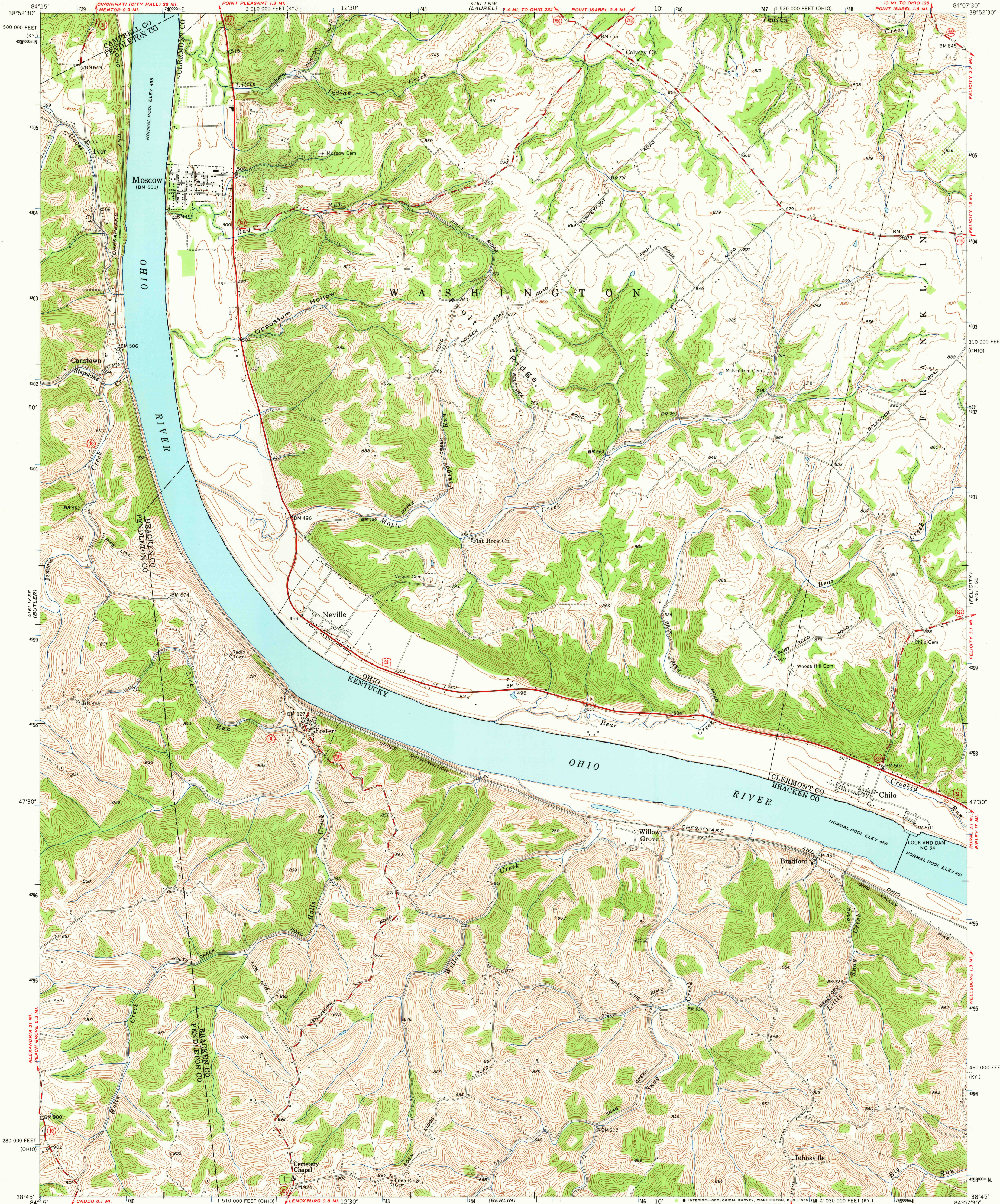


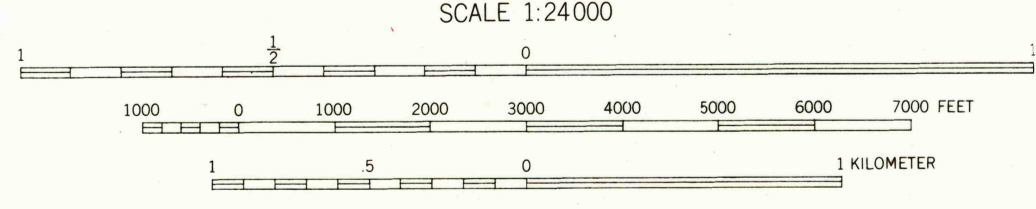
UNITED STATES
DEPARTMENT OF THE INTERIOR
GEOLOGICAL SURVEY

MOSCOW QUADRANGLE
OHIO-KENTUCKY
7.5 MINUTE SERIES (TOPOGRAPHIC)
SW 1/4 FELICITY 15' QUADRANGLE
10 MI. TO OHIO 125
POINT ISABEL 1.6 MI.
10 MI. TO OHIO 125
POINT ISABEL 1.6 MI.



Mapped, edited, and published by the Geological Survey
Control by USGS, USC&GS, and USCE
Topography from aerial photographs by multiple methods
Aerial photographs taken 1950 and 1952. Field check 1953
Polyconic projection, 1927 North American datum
10,000-foot grids based on Ohio coordinate system,
south zone and Kentucky coordinate system, north zone
1000-meter Universal Transverse Mercator grid ticks,
zone 16, shown in blue

UTM GRID AND 1983 MAGNETIC NORTH
DECLINATION AT CENTER OF SHEET



CONTOUR INTERVAL 20 FEET
DATUM IS MEAN SEA LEVEL

THIS MAP COMPLIES WITH NATIONAL MAP ACCURACY STANDARDS
FOR SALE BY U.S. GEOLOGICAL SURVEY, WASHINGTON, D.C. 20242,
KENTUCKY GEOLOGICAL SURVEY, LEXINGTON, KENTUCKY,
AND KENTUCKY DEPARTMENT OF COMMERCE, FRANKFORT, KENTUCKY
A FOLDER DESCRIBING TOPOGRAPHIC MAPS AND SYMBOLS IS AVAILABLE ON REQUEST

USGS
Historical File
Topographic Division



ROAD CLASSIFICATION
Heavy-duty 4 LANE 16 LANE Light-duty
Medium-duty 4 LANE 16 LANE Unimproved dirt
U.S. Route State Route

U.S.G.S.
FIVE COPY
TOPOGRAPHIC DIVISION

MOSCOW, OHIO-KY.
SW 1/4 FELICITY 15' QUADRANGLE
N3845-W8407.5/7.5
1953
AMS 4161 1 SW-SERIES V852

2390
MAR 11 1954