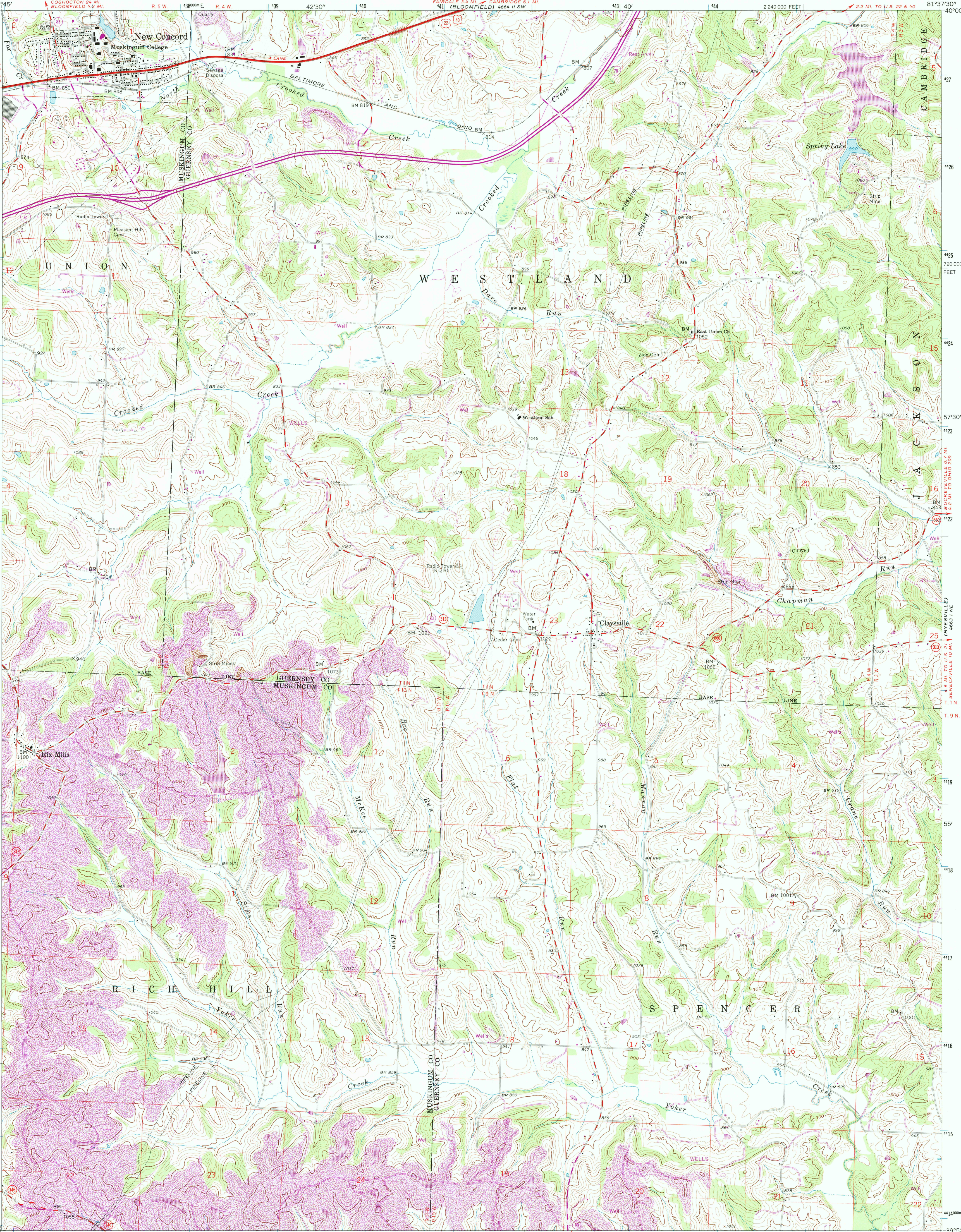


UNITED STATES
DEPARTMENT OF THE INTERIOR
GEOLOGICAL SURVEY

STATE OF OHIO
DEPARTMENT OF TRANSPORTATION
DEPARTMENT OF NATURAL RESOURCES
DIVISION OF GEOLOGICAL SURVEY

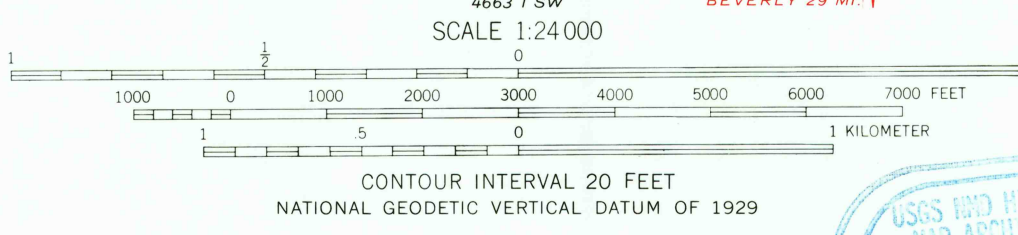
NEW CONCORD QUADRANGLE
OHIO
7.5 MINUTE SERIES (TOPOGRAPHIC)

4663 11 SE
(CAMBRIDGE)



Mapped, edited, and published by the Geological Survey
Control by USGS and USC&GS
Topography by photogrammetric methods from aerial
photographs taken 1960. Field checked 1961
Polyconic projection. 1927 North American datum
10,000-foot grid based on Ohio coordinate system, south zone
1000-meter Universal Transverse Mercator grid ticks,
zone 17, shown in blue
Area north of Base Line lies within the United States Military District
Land lines based on the Base Line of the United States Military District
Area south of Base Line lies within Congress Lands
east of the Scioto River
Land lines based on the Ohio River Base
Map photorevised 1989
No major culture or drainage changes observed

The difference between 1927 North American Datum and North
American Datum of 1983 (NAD 83) for 7.5-minute intersections
is given in USGS Bulletin 1875. The NAD 83 is shown by
dashed corner ticks



ROAD CLASSIFICATION
Heavy-duty ——— Light-duty ———
Medium-duty ——— Unimproved dirt ———
U.S. Route ——— State Route ———
Interstate Route ———

NEW CONCORD, OHIO

39081-H6-TF-024
PHOTOINSPECTED 1989
1961
PHOTOREVISED 1972 AND 1975
DMA 4663 1 NW—SERIES V852

THIS MAP COMPLIES WITH NATIONAL MAP ACCURACY STANDARDS
FOR SALE BY U.S. GEOLOGICAL SURVEY
DENVER, COLORADO 80225, OR RESTON, VIRGINIA 22092
A FOLDER DESCRIBING TOPOGRAPHIC MAPS AND SYMBOLS IS AVAILABLE ON REQUEST

Revisions shown in purple compiled in cooperation with
State of Ohio agencies from aerial photographs taken
1972 and 1975. This information not field checked

USGS HISTORICAL
MAP ARCHIVES
DEC 30 1991
REC'D FILE COPY



QUADRANGLE LOCATION