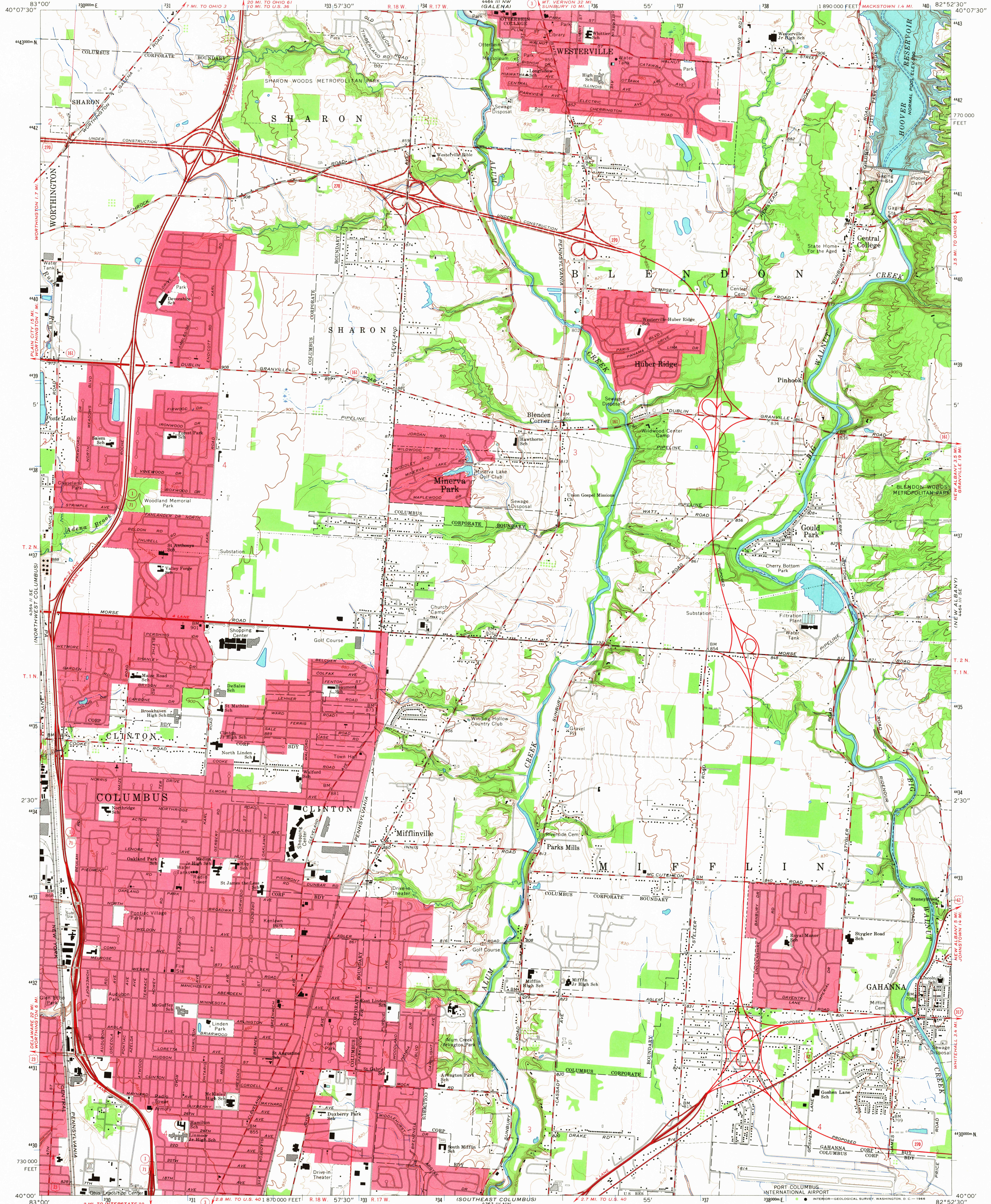
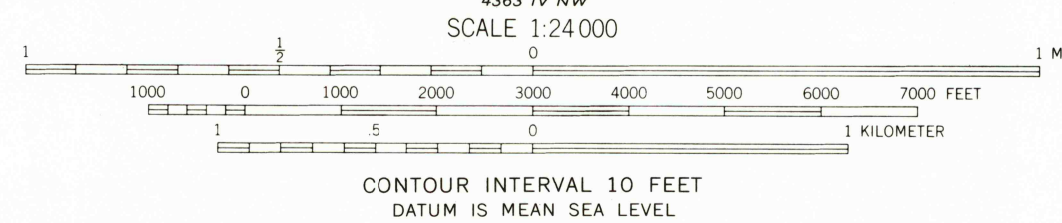
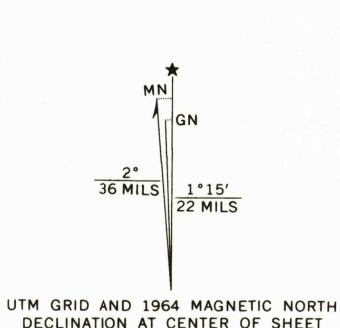


UNITED STATES
DEPARTMENT OF THE INTERIOR
GEOLOGICAL SURVEY

NORTHEAST COLUMBUS QUADRANGLE
OHIO—FRANKLIN CO.
7.5 MINUTE SERIES (TOPOGRAPHIC)
SW/4 WESTERVILLE 15' QUADRANGLE



Mapped, edited, and published by the Geological Survey
Revised in cooperation with State of Ohio agencies
Control by USGS, USC&GS, USCE, and City of Columbus
Topography by photogrammetric methods from aerial
photographs taken 1953. Field checked 1954. Revised 1964
Polyconic projection. 1927 North American datum
10,000-foot grid based on Ohio coordinate system,
south zone
1000-meter Universal Transverse Mercator grid ticks,
zone 17, shown in blue
Fine red dashed lines indicate selected fence and field lines where
generally visible on aerial photographs. This information is unchecked
Red tint indicates areas in which only landmark buildings are shown
Entire area lies within the United States Military District
Land lines based on the Base Line of the United States Military District



USGS
Historical File
Topographic Division



ROAD CLASSIFICATION
Heavy-duty ——— Light-duty ———
Medium-duty ——— Unimproved dirt ———
○ Interstate Route ○ U.S. Route ○ State Route

U.S.G.S.

NORTHEAST COLUMBUS, OHIO
SW/4 WESTERVILLE 15' QUADRANGLE
N4000—W8252.5/7.5

1964

AMS 4464 III SW—SERIES V852

THIS MAP COMPLIES WITH NATIONAL MAP ACCURACY STANDARDS
FOR SALE BY U.S. GEOLOGICAL SURVEY, WASHINGTON, D.C. 20242
A FOLDER DESCRIBING TOPOGRAPHIC MAPS AND SYMBOLS IS AVAILABLE ON REQUEST

TOPOGRAPHIC DIVISION

3685