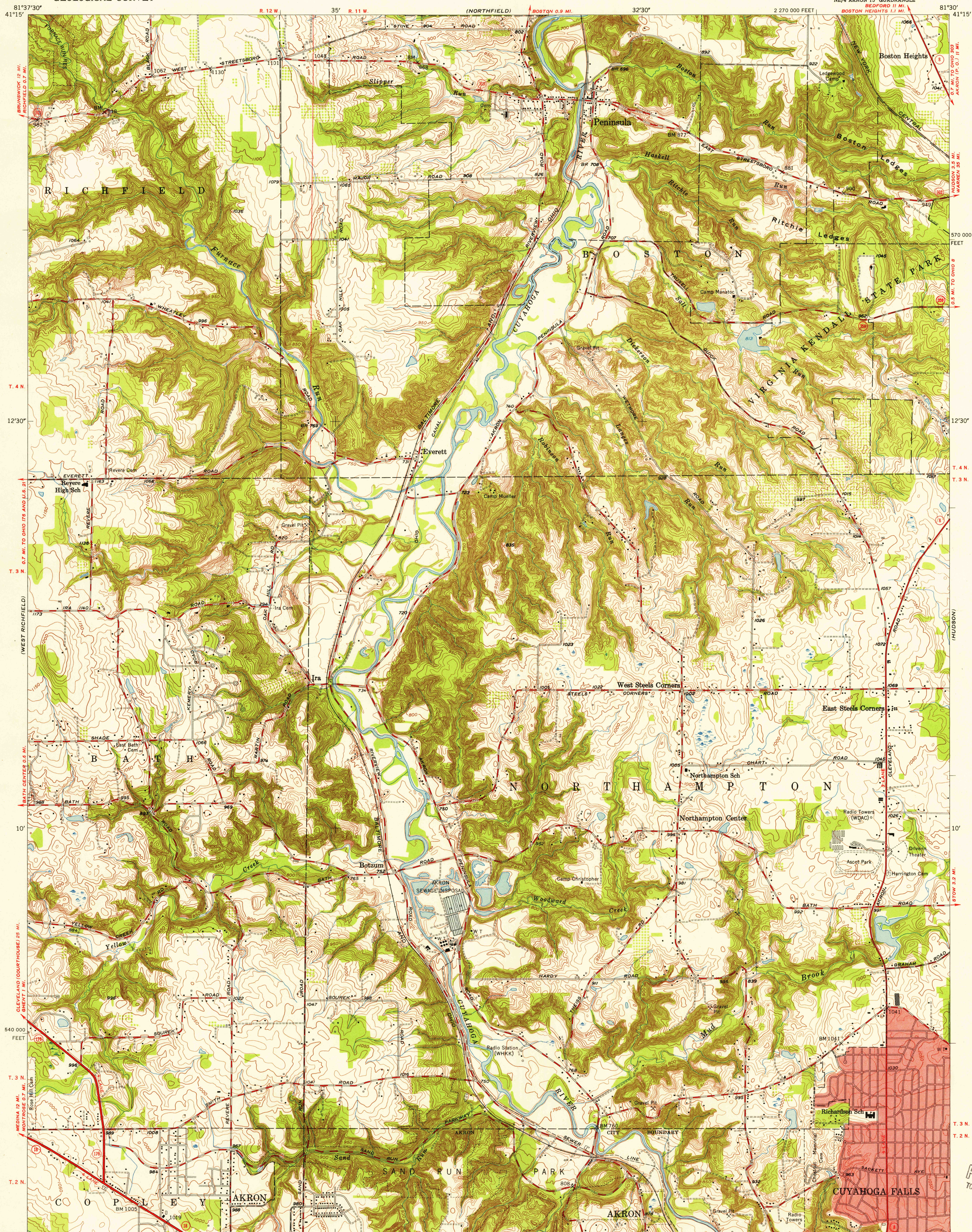


UNITED STATES
DEPARTMENT OF THE INTERIOR
GEOLOGICAL SURVEY

PENINSULA QUADRANGLE
OHIO-SUMMIT CO.
7.5 MINUTE SERIES (TOPOGRAPHIC)



U.S.G.S.
FILE COPY
TOPOGRAPHIC DIVISION

U.S.G.S.
FILE COPY
TOPOGRAPHIC DIVISION

Mapped, edited, and published by the Geological Survey
Control by USGS and USC&GS
Topography from aerial photographs by Kelsch plotter
Aerial photographs taken 1951-1952. Field check 1953
Polyconic projection. 1927 North American datum
10,000-foot grid based on Ohio coordinate system,
north zone
Red tint indicates area in which only
landmark buildings are shown
Entire area lies within the Connecticut Western Reserve
Land lines were established by the Connecticut Land Company

APPROXIMATE MEAN
DECLINATION, 1953

SCALE 1:24,000
1 0 1000 2000 3000 4000 5000 6000 7000 FEET
1 5 0 5 10 KILOMETER
CONTOUR INTERVAL 10 FEET
DATUM IS MEAN SEA LEVEL
THIS MAP COMPLIES WITH NATIONAL MAP ACCURACY STANDARDS
FOR SALE BY U. S. GEOLOGICAL SURVEY, WASHINGTON, 25, D. C.
A FOLDER DESCRIBING TOPOGRAPHIC MAPS AND SYMBOLS IS AVAILABLE ON REQUEST

USGS
Historical File
Topographic Division
OHIO
QUADRANGLE LOCATION

ROAD CLASSIFICATION
Heavy-duty 4 LANE 16 LANE Light-duty
Medium-duty 4 LANE 16 LANE Unimproved dirt
U. S. Route State Route

PENINSULA, OHIO
NE/4 AKRON 15' QUADRANGLE
N4107.5-W8130/7.5
1953

MAY 2 1955

3653