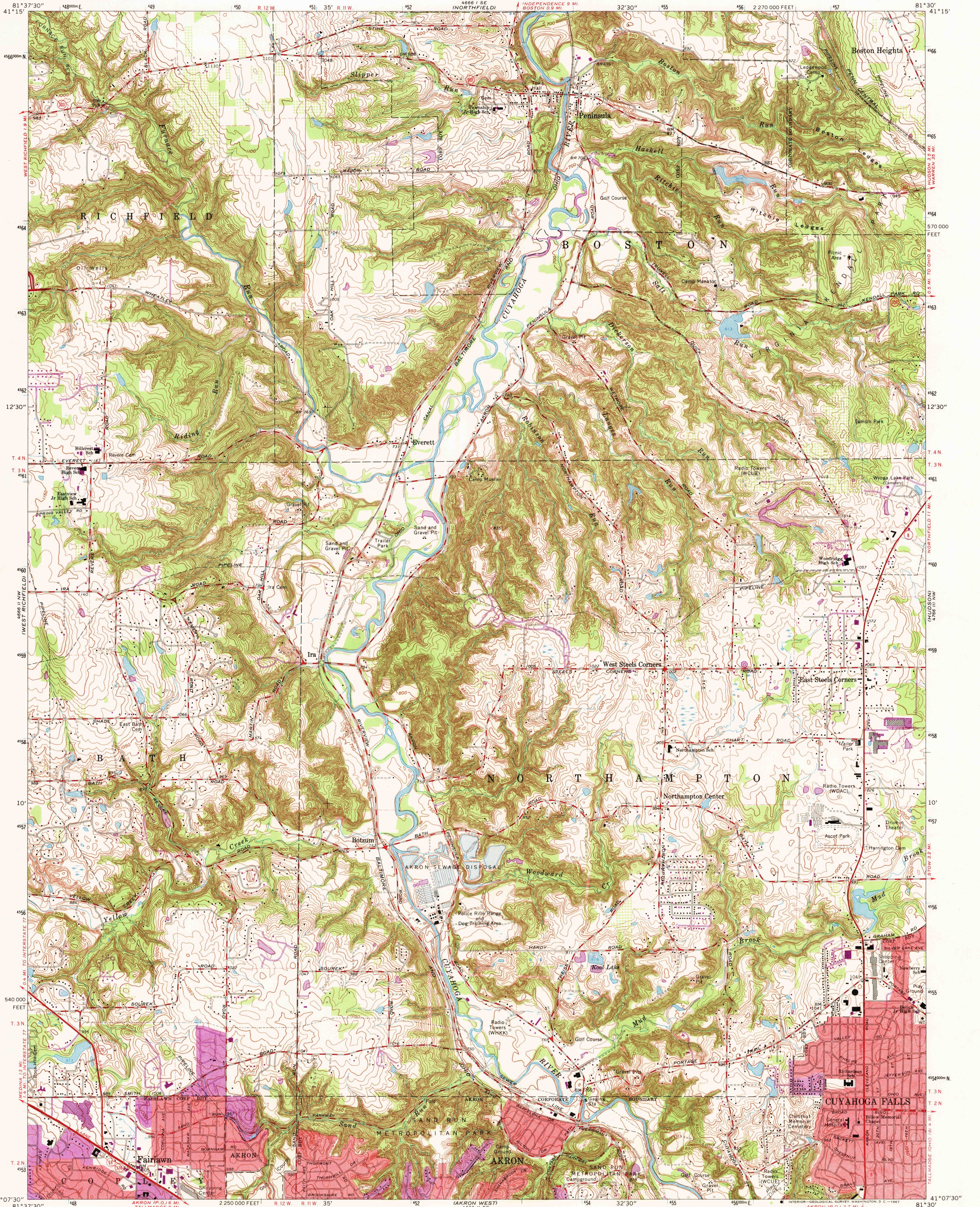
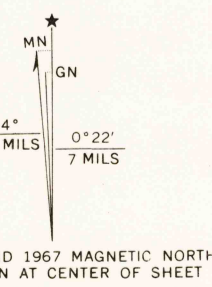


UNITED STATES  
DEPARTMENT OF THE INTERIOR  
GEOLOGICAL SURVEY

PENINSULA QUADRANGLE  
OHIO-SUMMIT CO.  
7.5 MINUTE SERIES (TOPOGRAPHIC)  
NE/4 AKRON 15' QUADRANGLE



Mapped, edited, and published by the Geological Survey  
Revised in cooperation with State of Ohio agencies  
Control by USGS and USC&GS  
Topography by photogrammetric methods from aerial photographs  
taken 1951-52. Field checked 1953. Revised from aerial  
photographs taken 1962. Field checked 1963  
Polyconic projection. 1927 North American datum  
10,000-foot grid based on Ohio coordinate system, north zone  
1000-meter Universal Transverse Mercator grid ticks,  
zone 17, shown in blue  
Fine red dashed lines indicate selected fence and field lines where  
generally visible on aerial photographs. This information is unchecked  
Red tint indicates areas in which only landmark buildings are shown  
Entire area lies within the Connecticut Western Reserve  
Dotted land lines established by private subdivision of the  
Connecticut Western Reserve



SCALE 1:24,000  
CONTOUR INTERVAL 10 FEET  
DATUM IS MEAN SEA LEVEL  
THIS MAP COMPLIES WITH NATIONAL MAP ACCURACY STANDARDS  
FOR SALE BY U.S. GEOLOGICAL SURVEY, WASHINGTON, D. C. 20242  
A FOLDER DESCRIBING TOPOGRAPHIC MAPS AND SYMBOLS IS AVAILABLE ON REQUEST

USGS  
Historical File  
Topographic Division



ROAD CLASSIFICATION  
Heavy-duty ——— Light-duty ———  
Medium-duty ——— Unimproved dirt ———  
State Route ———  
FILE COPY  
TOPOGRAPHIC DIVISION  
PENINSULA, OHIO  
NE/4 AKRON 15' QUADRANGLE  
N4107.5-W8130/7.5  
1963  
PHOTOREVISED 1967  
AMS 4666 II NE-SERIES V852

Revisions shown in purple compiled from aerial photographs  
taken 1967. This information not field checked  
Purple tint indicates extension of urban areas

3305  
MAR 4 1969