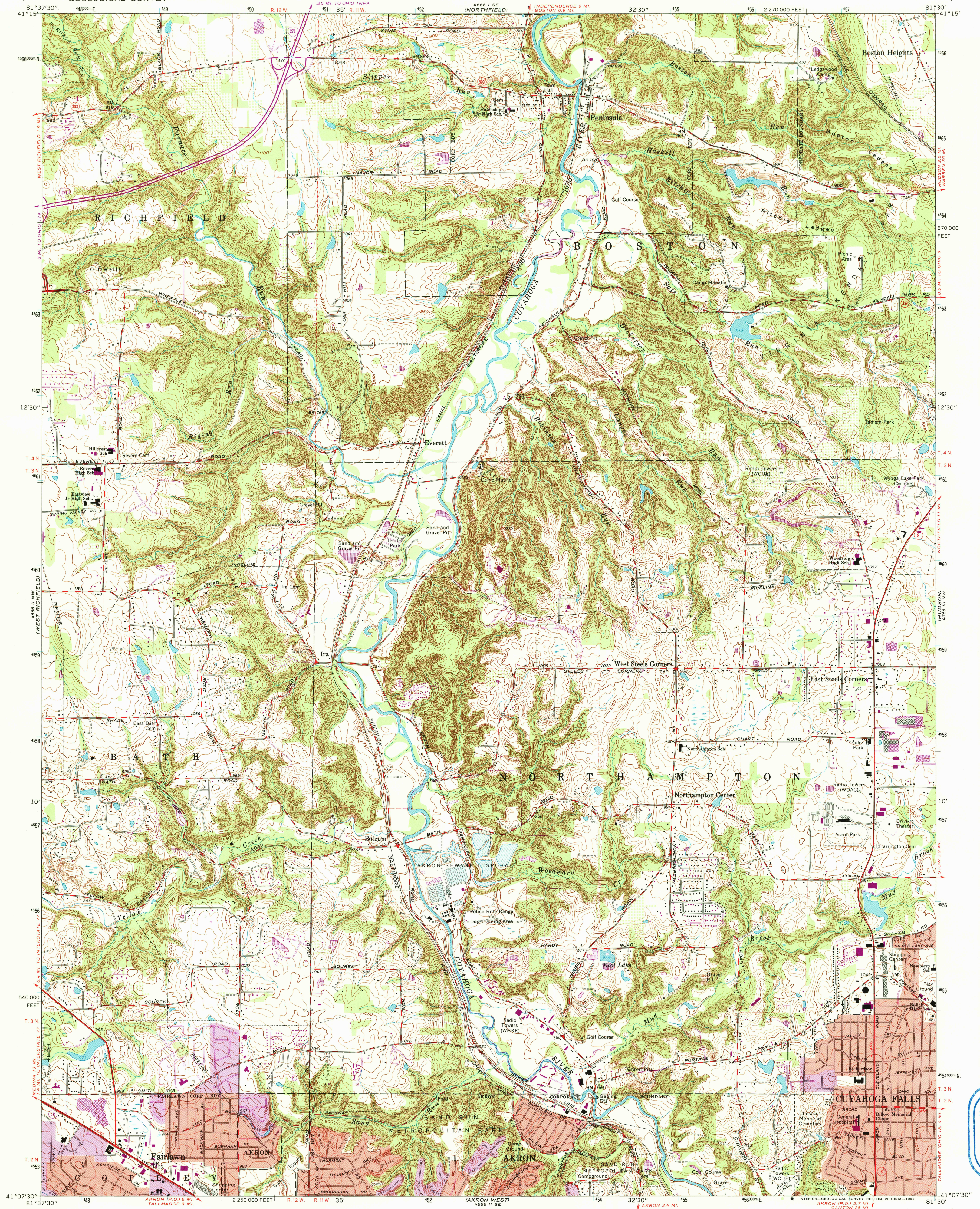


UNITED STATES
DEPARTMENT OF THE INTERIOR
GEOLOGICAL SURVEY

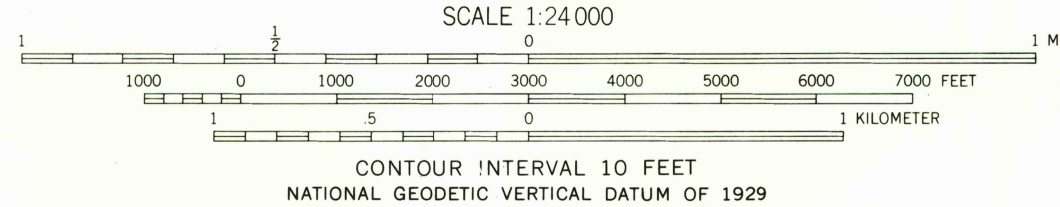
PENINSULA QUADRANGLE
OHIO—SUMMIT CO.
7.5 MINUTE SERIES (TOPOGRAPHIC)



USGS HISTORICAL
MAP ARCHIVES
FEB 28 1992
REC'D FILE COPY

Mapped, edited, and published by the Geological Survey
Revised in cooperation with State of Ohio agencies
Control by USGS and USC&GS
Topography by photogrammetric methods from aerial photographs
taken 1951-52. Field checked 1953. Revised from aerial
photographs taken 1962. Field checked 1963
Polyconic projection. 1927 North American datum
10,000-foot grid based on Ohio coordinate system, north zone
1000-meter Universal Transverse Mercator grid ticks,
zone 17, shown in blue
Red tint indicates areas in which only landmark buildings are shown
Entire area lies within the Connecticut Western Reserve
Dotted land lines established by private subdivision of the
Connecticut Western Reserve
The difference between 1927 North American Datum and North
American Datum of 1983 (NAD 83) for 7.5-minute intersections
is given in USGS Bulletin 1875. The NAD 83 is shown by
dashed corner ticks

Map photocopied 1988
No major culture or drainage changes observed
Boundary lines shown in purple compiled from latest
information available from the controlling authority



ROAD CLASSIFICATION
Heavy-duty ——— Light-duty ———
Medium-duty ——— Unimproved dirt ———
State Route ———

PENINSULA, OHIO
41081-B5-TF-024
PHOTOINSPECTED 1988
1963
PHOTOREVISED 1979
DMA 4666 II NE—SERIES V852

THIS MAP COMPLIES WITH NATIONAL MAP ACCURACY STANDARDS
FOR SALE BY U.S. GEOLOGICAL SURVEY
DENVER, COLORADO 80225 OR RESTON, VIRGINIA 22092
A FOLDER DESCRIBING TOPOGRAPHIC MAPS AND SYMBOLS IS AVAILABLE ON REQUEST