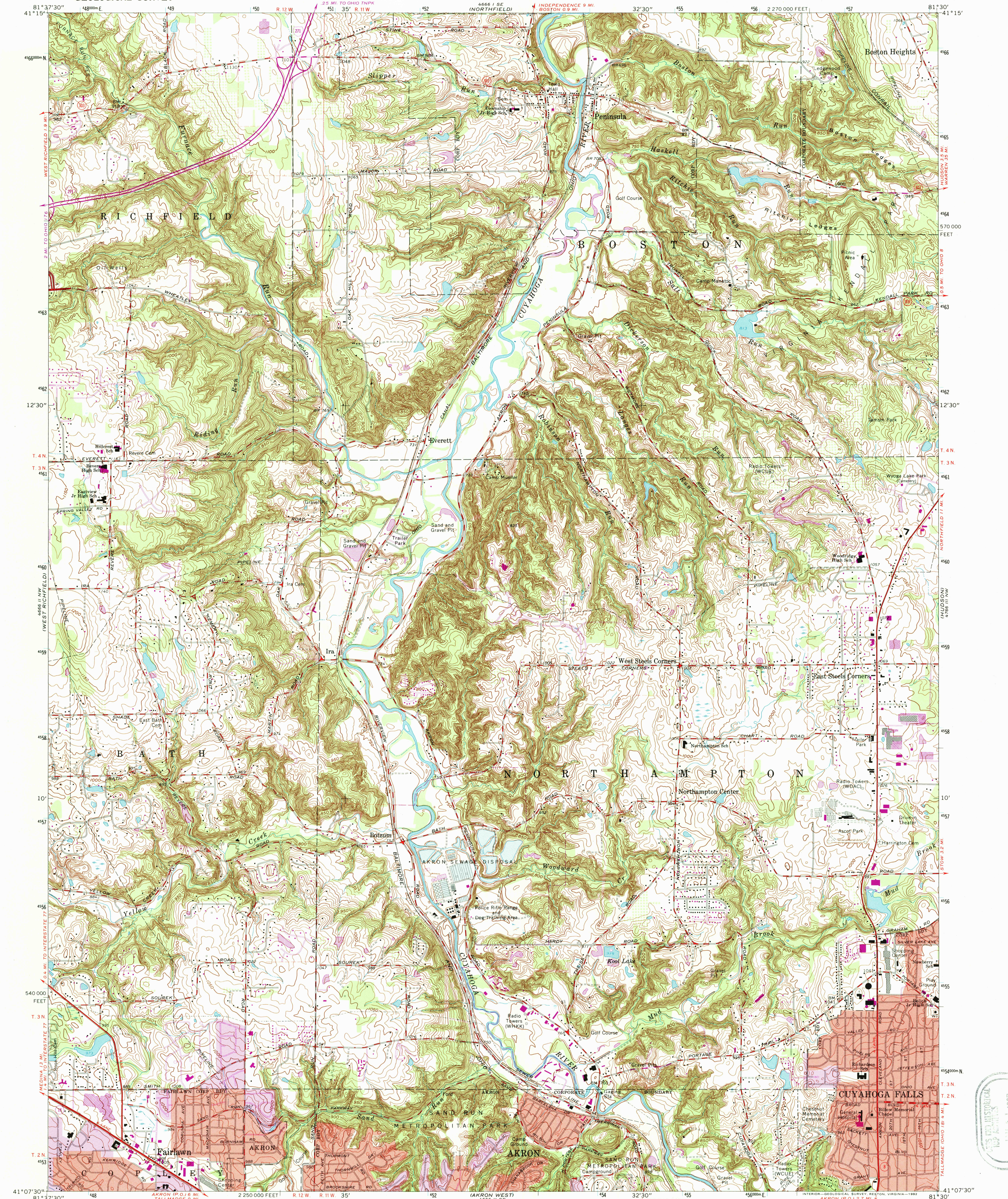
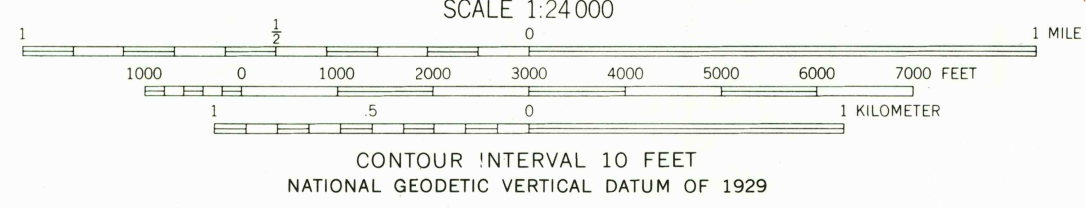
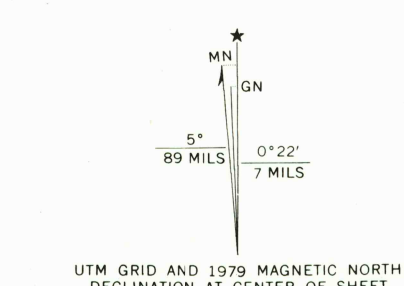


UNITED STATES  
DEPARTMENT OF THE INTERIOR  
GEOLOGICAL SURVEY

PENINSULA QUADRANGLE  
OHIO—SUMMIT CO.  
7.5 MINUTE SERIES (TOPOGRAPHIC)



Mapped, edited, and published by the Geological Survey  
Revised in cooperation with State of Ohio agencies  
Control by USGS and USC&GS  
Topography by photogrammetric methods from aerial photographs  
taken 1951-52. Field checked 1953. Revised from aerial  
photographs taken 1962. Field checked 1963  
Polyconic projection. 1927 North American datum  
10,000-foot grid based on Ohio coordinate system, north zone  
1000-meter Universal Transverse Mercator grid ticks,  
zone 17, shown in blue  
Red tint indicates areas in which only landmark buildings are shown  
Entire area lies within the Connecticut Western Reserve  
Dotted land lines established by private subdivision of the  
Connecticut Western Reserve  
The difference between 1927 North American Datum and North  
American Datum of 1983 (NAD 83) for 7.5-minute intersections  
is given in USGS Bulletin 1875. The NAD 83 is shown by  
dashed corner ticks



THIS MAP COMPLIES WITH NATIONAL MAP ACCURACY STANDARDS  
FOR SALE BY U. S. GEOLOGICAL SURVEY  
DENVER, COLORADO 80225, OR RESTON, VIRGINIA 22092  
A FOLDER DESCRIBING TOPOGRAPHIC MAPS AND SYMBOLS IS AVAILABLE ON REQUEST

Revisions shown in purple compiled in cooperation with State  
of Ohio agencies from aerial photographs taken 1977. This  
information not field checked. Map edited 1979  
Purple tint indicates extension of urban areas



PENINSULA, OHIO  
41081-B5-TF-024  
PHOTOINSPECTED 1988  
1963  
PHOTOREVISED 1979  
DMA 4666 II NE—SERIES V852

