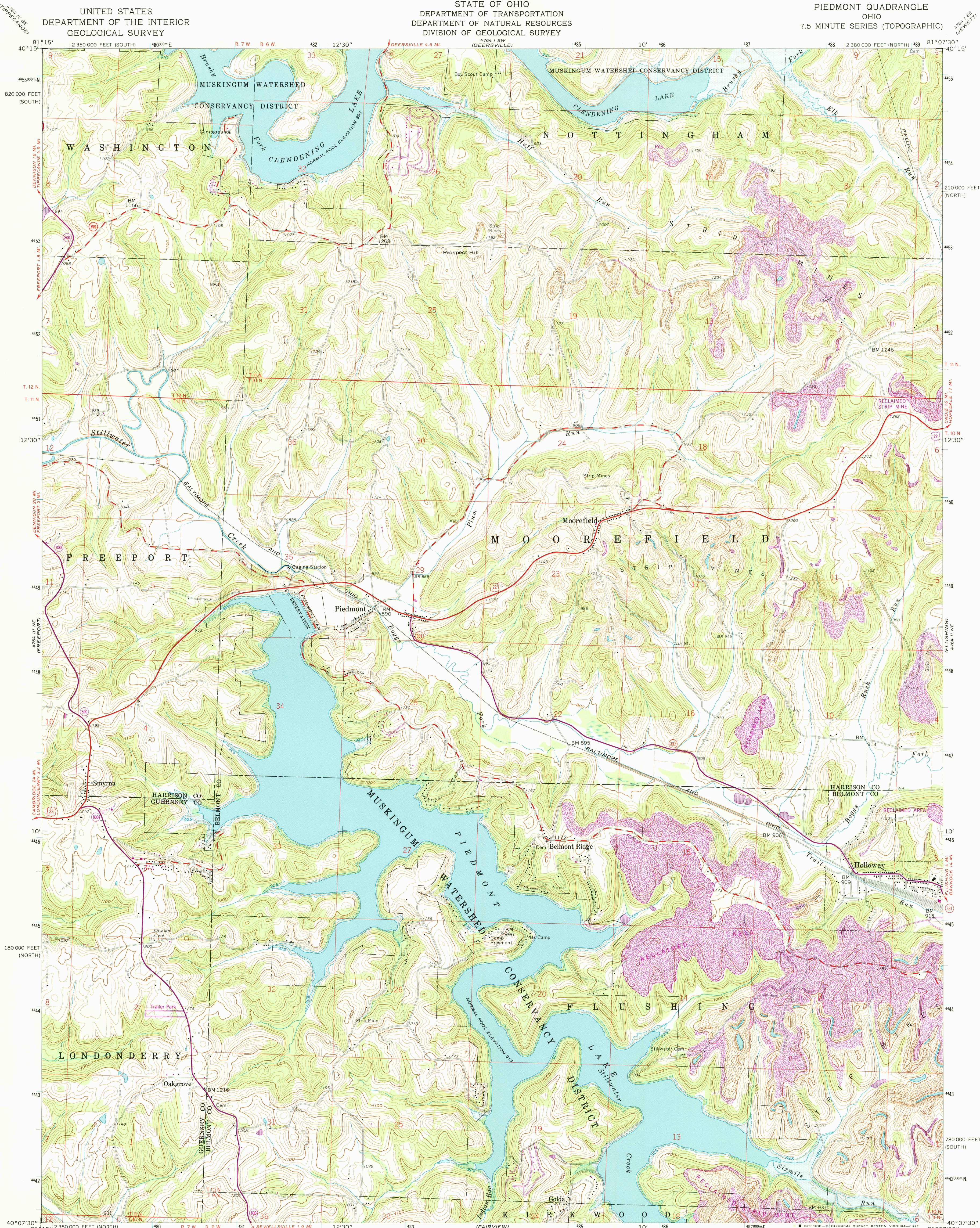


UNITED STATES  
DEPARTMENT OF THE INTERIOR  
GEOLOGICAL SURVEY

STATE OF OHIO  
DEPARTMENT OF TRANSPORTATION  
DEPARTMENT OF NATURAL RESOURCES  
DIVISION OF GEOLOGICAL SURVEY

PIEDMONT QUADRANGLE  
OHIO  
7.5 MINUTE SERIES (TOPOGRAPHIC)



Mapped, edited, and published by the Geological Survey

Control by USGS and USC&GS

Topography by photogrammetric methods from aerial photographs taken 1960. Field checked 1961

Polyconic projection. 1927 North American datum. 10,000-foot grids based on Ohio coordinate system, north and south zones.

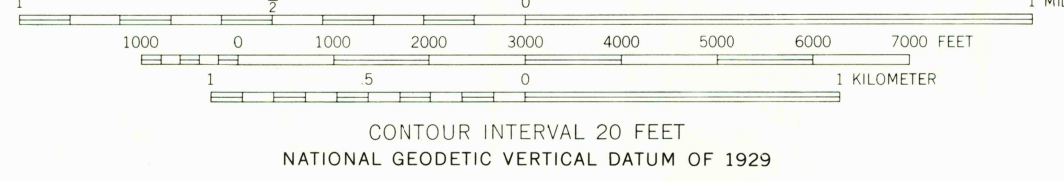
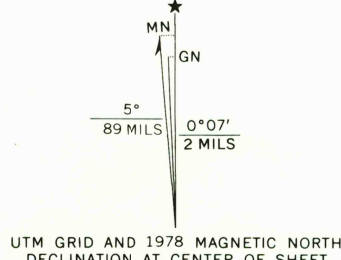
1000-meter Universal Transverse Mercator grid ticks, zone 17, shown in blue.

Entire area lies within the Old Seven Ranges. Land lines based on the Ohio River Base.

Areas covered by dashed light-blue pattern are subject to controlled inundation.

Map photorevised 1988. No major culture or drainage changes observed.

The difference between 1927 North American Datum and North American Datum of 1983 (NAD 83) for 7.5-minute intersections is given in USGS Bulletin 1875. The NAD 83 is shown by dashed corner ticks.



THIS MAP COMPLIES WITH NATIONAL MAP ACCURACY STANDARDS FOR SALE BY U.S. GEOLOGICAL SURVEY. DENVER, COLORADO 80225, OR RESTON, VIRGINIA 22092. A FOLDER DESCRIBING TOPOGRAPHIC MAPS AND SYMBOLS IS AVAILABLE ON REQUEST.

Revisions shown in purple compiled in cooperation with State of Ohio agencies from aerial photographs taken 1976. Map edited 1978. This information not field checked.

ROAD CLASSIFICATION  
Heavy-duty Light-duty  
Medium-duty Unimproved dirt  
U.S. Route State Route



PIEDMONT, OHIO

40081 B2-TF-024

PHOTOINSPECTED 1988

1961

PHOTOREVISED 1978

DMA 4764 II NW-SERIES V852

