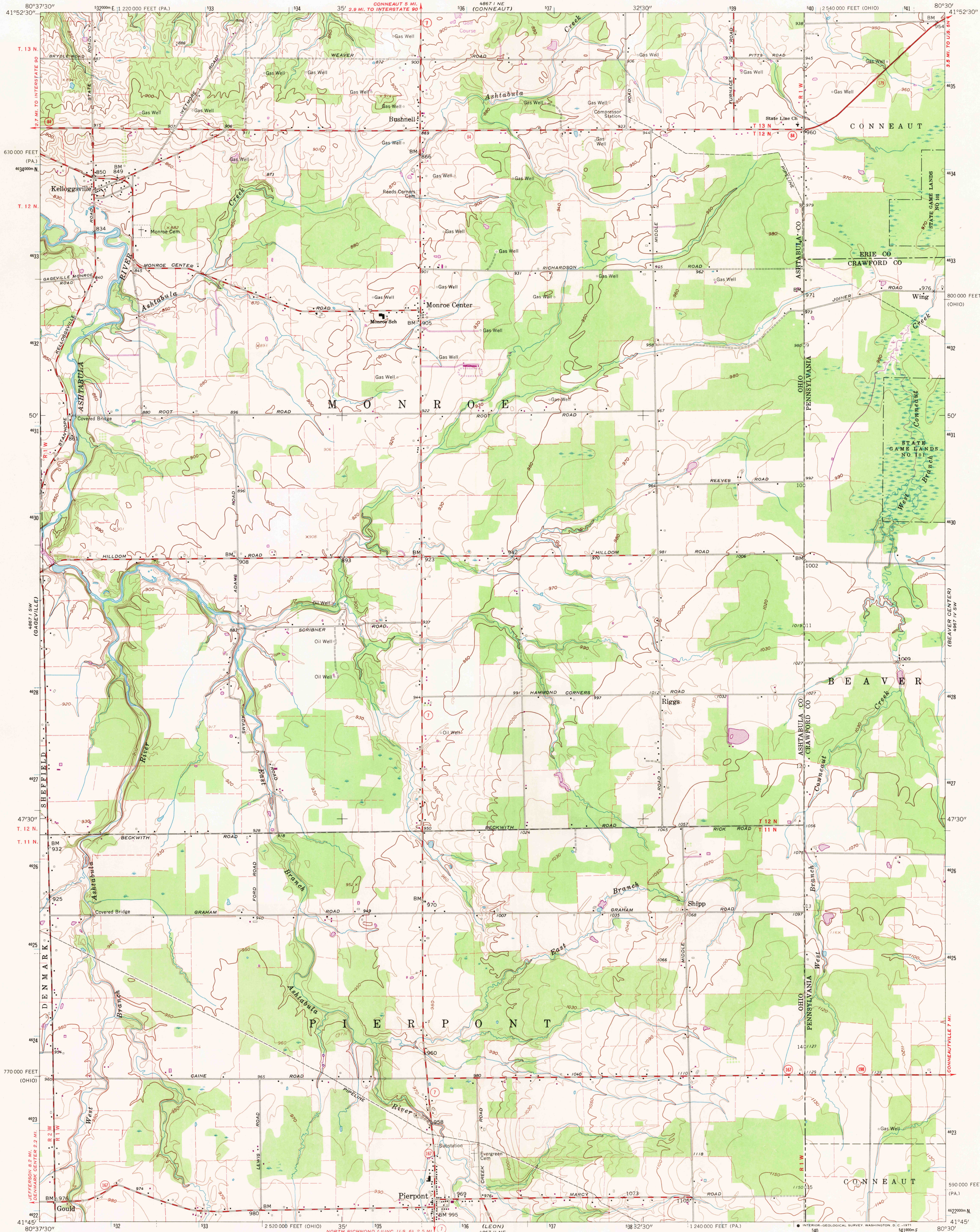


UNITED STATES
DEPARTMENT OF THE INTERIOR
GEOLOGICAL SURVEY

STATE OF OHIO
DEPARTMENT OF HIGHWAYS
DEPARTMENT OF NATURAL RESOURCES
DIVISION OF GEOLOGICAL SURVEY

PIERPONT QUADRANGLE
OHIO-PENNSYLVANIA
7.5 MINUTE SERIES (TOPOGRAPHIC)
SE/4 CONNEAUT 15' QUADRANGLE



Mapped, edited, and published by the Geological Survey

Control by USGS and USC&GS

Topography from aerial photographs by photogrammetric methods

Aerial photographs taken 1958. Field check 1960

Polyconic projection, 1927 North American datum

10,000-foot grid based on Ohio coordinate system, north zone,

and Pennsylvania coordinate system, north zone

1000-meter Universal Transverse Mercator grid ticks,

zone 17, shown in blue

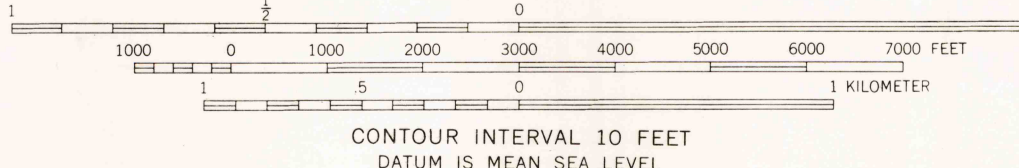
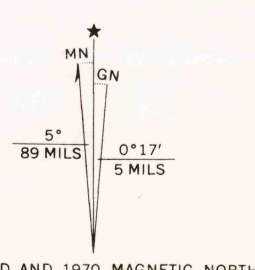
Fine red dashed lines indicate selected fence and field lines where

generally visible on aerial photographs. This information is unchecked

Ohio area lies within the Connecticut Western Reserve

Land lines established by private subdivision of the

Connecticut Western Reserve



USGS
Historical File
Topographic Division



ROAD CLASSIFICATION
Heavy-duty ——— Light-duty ———
Medium-duty ——— Unimproved dirt ———
State Route ———

PIERPONT, OHIO-PA.
SE/4 CONNEAUT 15' QUADRANGLE
N4145-W8030/7.5

1960
PHOTOREVISED 1970
AMS 4867 I SE-SERIES V852

THIS MAP COMPLIES WITH NATIONAL MAP ACCURACY STANDARDS
FOR SALE BY U. S. GEOLOGICAL SURVEY, WASHINGTON, D. C. 20242
A FOLDER DESCRIBING TOPOGRAPHIC MAPS AND SYMBOLS IS AVAILABLE ON REQUEST

Revisions shown in purple compiled in cooperation with
State of Ohio agencies from aerial photographs taken 1970
This information not field checked

FEB 10 1977