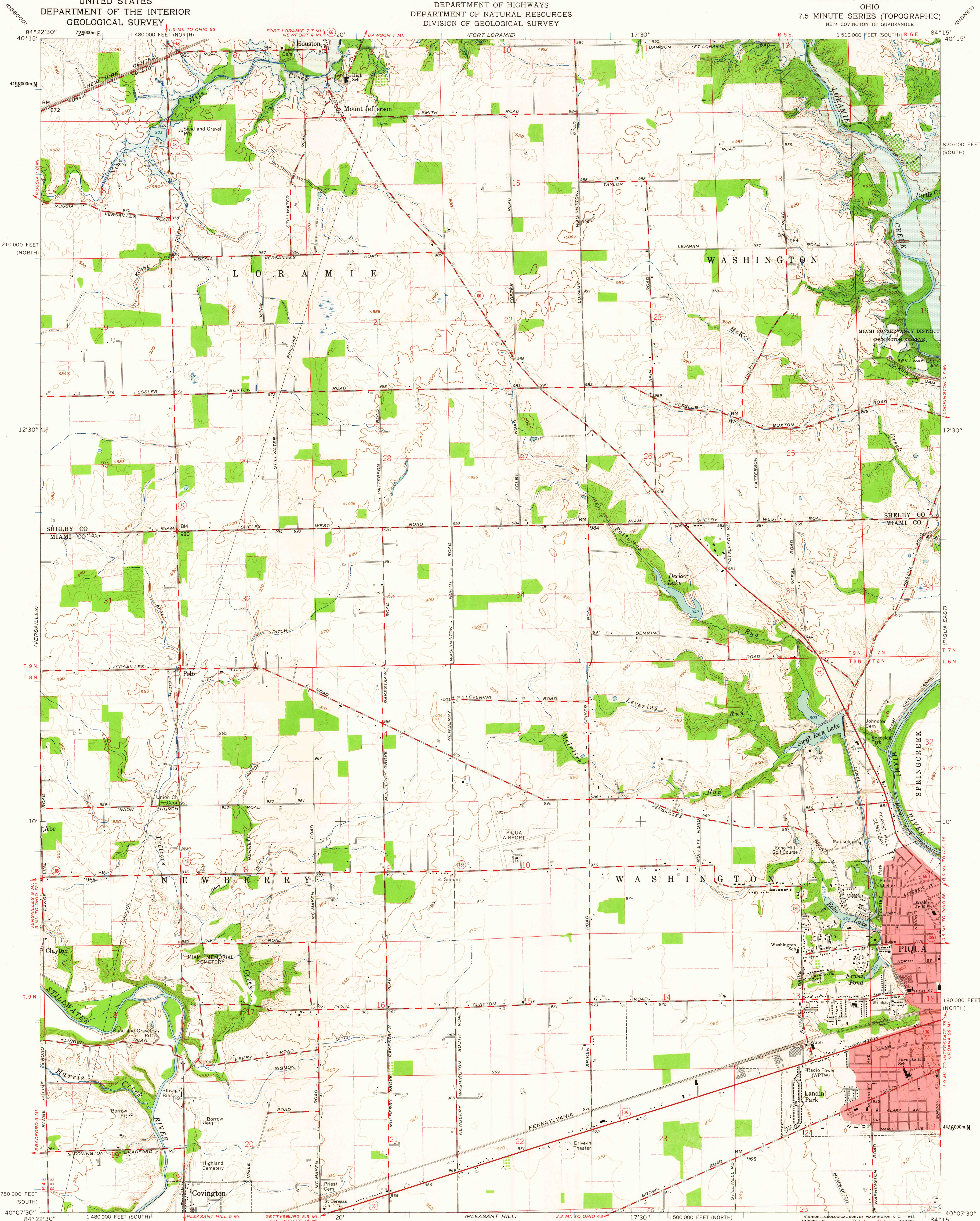


UNITED STATES
DEPARTMENT OF THE INTERIOR
GEOLOGICAL SURVEY

STATE OF OHIO
DEPARTMENT OF HIGHWAYS
DEPARTMENT OF NATURAL RESOURCES
DIVISION OF GEOLOGICAL SURVEY

PIQUA WEST QUADRANGLE
OHIO
7.5 MINUTE SERIES (TOPOGRAPHIC)
NE 4 COVINGTON 15' QUADRANGLE
1:50,000 FEET (SOUTH) R 5 E R 6 E



Mapped, edited, and published by the Geological Survey
Control by USGS and USC&GS
Topography by photogrammetric methods from aerial
photographs taken 1959. Field checked 1961
Polyconic projection. 1927 North American datum
10,000-foot grids based on Ohio coordinate system, south and north zones
1000-meter Universal Transverse Mercator grid ticks,
zone 16, shown in blue
Fine red dashed lines indicate selected fence and field lines where
generally visible on aerial photographs. This information is unchecked
Red tint indicates area in which only landmark buildings are shown
Areas covered by dashed light-blue pattern are subject to
controlled inundation to 938 feet
Area west of the Miami River lies within the Miami River Survey
Area east of the Miami River lies within the Between the Miamis
Land lines based on The Great Miami River Base

APPROXIMATE MEAN
DECLINATION, 1961

SCALE 1:24,000
1000 0 1000 2000 3000 4000 5000 6000 7000 FEET
1 KILOMETER
CONTOUR INTERVAL 10 FEET
DOTTED LINES REPRESENT 5-FOOT CONTOURS
DATUM IS MEAN SEA LEVEL

THIS MAP COMPLIES WITH NATIONAL MAP ACCURACY STANDARDS
FOR SALE BY U.S. GEOLOGICAL SURVEY, WASHINGTON 25, D. C.
A FOLDER DESCRIBING TOPOGRAPHIC MAPS AND SYMBOLS IS AVAILABLE ON REQUEST

USGS
Historical File
Topographic Division



ROAD CLASSIFICATION
Heavy-duty ——— Light-duty ———
Medium-duty ——— Unimproved dirt ———
U.S. Route ——— State Route ———

PIQUA WEST, OHIO
NE 4 COVINGTON 15' QUADRANGLE
N4007.5—W8415.7.5

1961

USGS 2465
FILE COPY
TOPOGRAPHIC DIVISION

OCT 19 1962