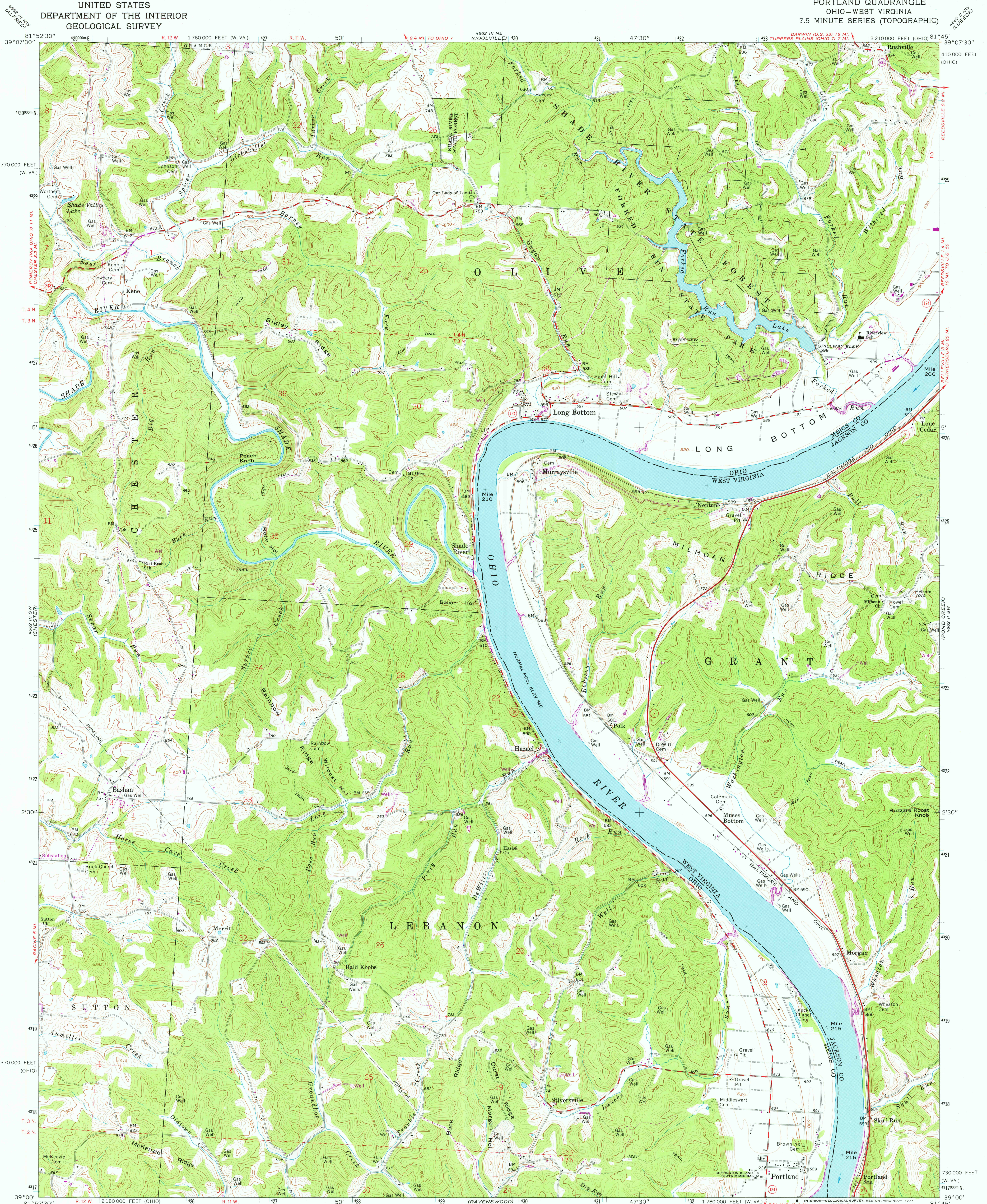


UNITED STATES  
DEPARTMENT OF THE INTERIOR  
GEOLOGICAL SURVEY

PORTLAND QUADRANGLE  
OHIO - WEST VIRGINIA  
7.5 MINUTE SERIES (TOPOGRAPHIC)



Mapped, edited, and published by the Geological Survey

Control by USGS, USC&GS, and USCE

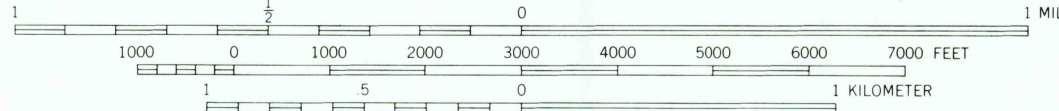
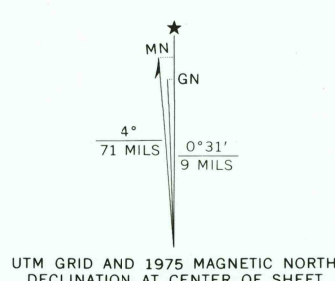
Topography by photogrammetric methods from aerial photographs taken 1957. Field checked 1960

Polyconic projection. 1927 North American datum 10,000-foot grids based on Ohio coordinate system, south zone and West Virginia coordinate system, south zone, 1000-meter Universal Transverse Mercator grid ticks, zone 17, shown in blue

Fine red dashed lines indicate selected fence and field lines where generally visible on aerial photographs. This information is unchecked

The state line as shown represents the approximate position of the low water line as determined from U.S. Corps of Engineers Ohio River Charts, surveyed 1913, and supplementary information

Land lines based on the Ohio River Base. Dotted land lines established by private subdivision of the Ohio Company Purchase



CONTOUR INTERVAL 20 FEET  
DOTTED LINES REPRESENT 10-FOOT CONTOURS  
NATIONAL GEODETIC VERTICAL DATUM OF 1929

THIS MAP COMPLIES WITH NATIONAL MAP ACCURACY STANDARDS  
FOR SALE BY U.S. GEOLOGICAL SURVEY, RESTON, VIRGINIA 22092  
A FOLDER DESCRIBING TOPOGRAPHIC MAPS AND SYMBOLS IS AVAILABLE ON REQUEST

Revisions shown in purple compiled in cooperation with States of Ohio and West Virginia agencies from aerial photographs taken 1971 and 1975. This information not field checked

USGS  
Historical File  
Topographic Division  
REVISED 1971 AND 1975  
AMS 4662 III SE-SERIES V852

ROAD CLASSIFICATION  
Heavy-duty ——— Light-duty ———  
Medium-duty ——— Unimproved dirt ———  
State Route ———

APR 12 1977

PORTLAND, OHIO - W. VA.

3720