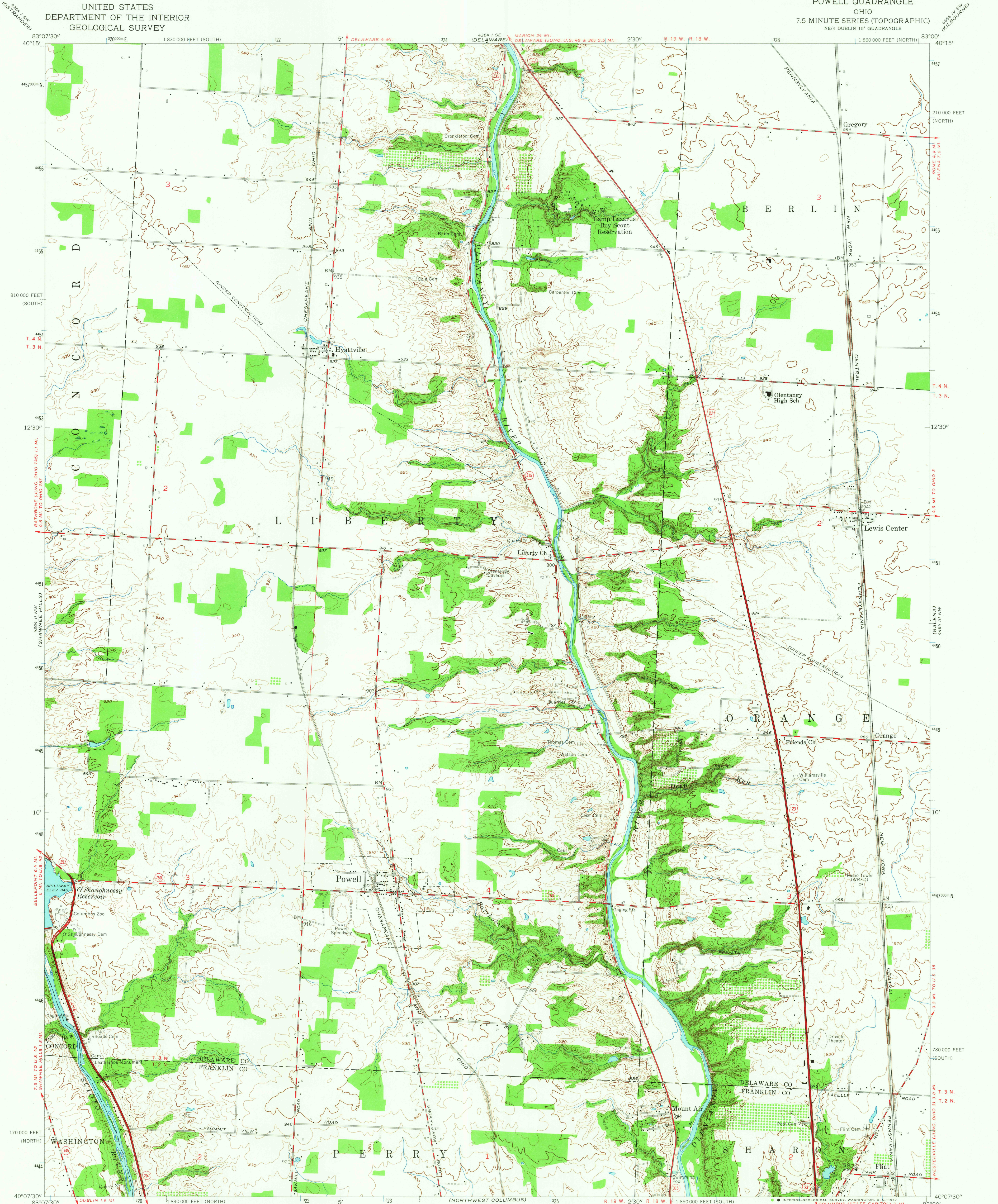


UNITED STATES
DEPARTMENT OF THE INTERIOR
GEOLOGICAL SURVEY

POWELL QUADRANGLE
OHIO
7.5 MINUTE SERIES (TOPOGRAPHIC)
NE/4 DUBLIN 1° QUADRANGLE



Mapped, edited, and published by the Geological Survey
Control by USGS and USC&GS
Topography from aerial photographs by photogrammetric methods
and by planetable surveys 1955. Aerial photographs taken 1953
Polyconic projection. 1927 North American datum
10,000-foot grids based on Ohio coordinate system,
north and south zones
Area west of the Scioto River lies within the
Virginia Military District
Land lines east of the Scioto River based on
the Scioto River Base
1000-meter Universal Transverse Mercator grid ticks,
zone 17, shown in blue

UTM GRID AND 1955 MAGNETIC NORTH
DECLINATION AT CENTER OF SHEET



THIS MAP COMPLIES WITH NATIONAL MAP ACCURACY STANDARDS
FOR SALE BY U.S. GEOLOGICAL SURVEY, WASHINGTON, D.C. 20242
A FOLDER DESCRIBING TOPOGRAPHIC MAPS AND SYMBOLS IS AVAILABLE ON REQUEST

USGS
Historical File
Topographic Division



U.S.G.S.
TOPOGRAPHIC DIVISION

ROAD CLASSIFICATION
Heavy-duty ——— Light-duty ———
Medium-duty ——— Unimproved dirt ———
U.S. Route ——— State Route ———

POWELL, OHIO
NE/4 DUBLIN 1° QUADRANGLE
N 4007.5—W 8300/7.5

1955
AMS 4364 II NE—SERIES V852

3640