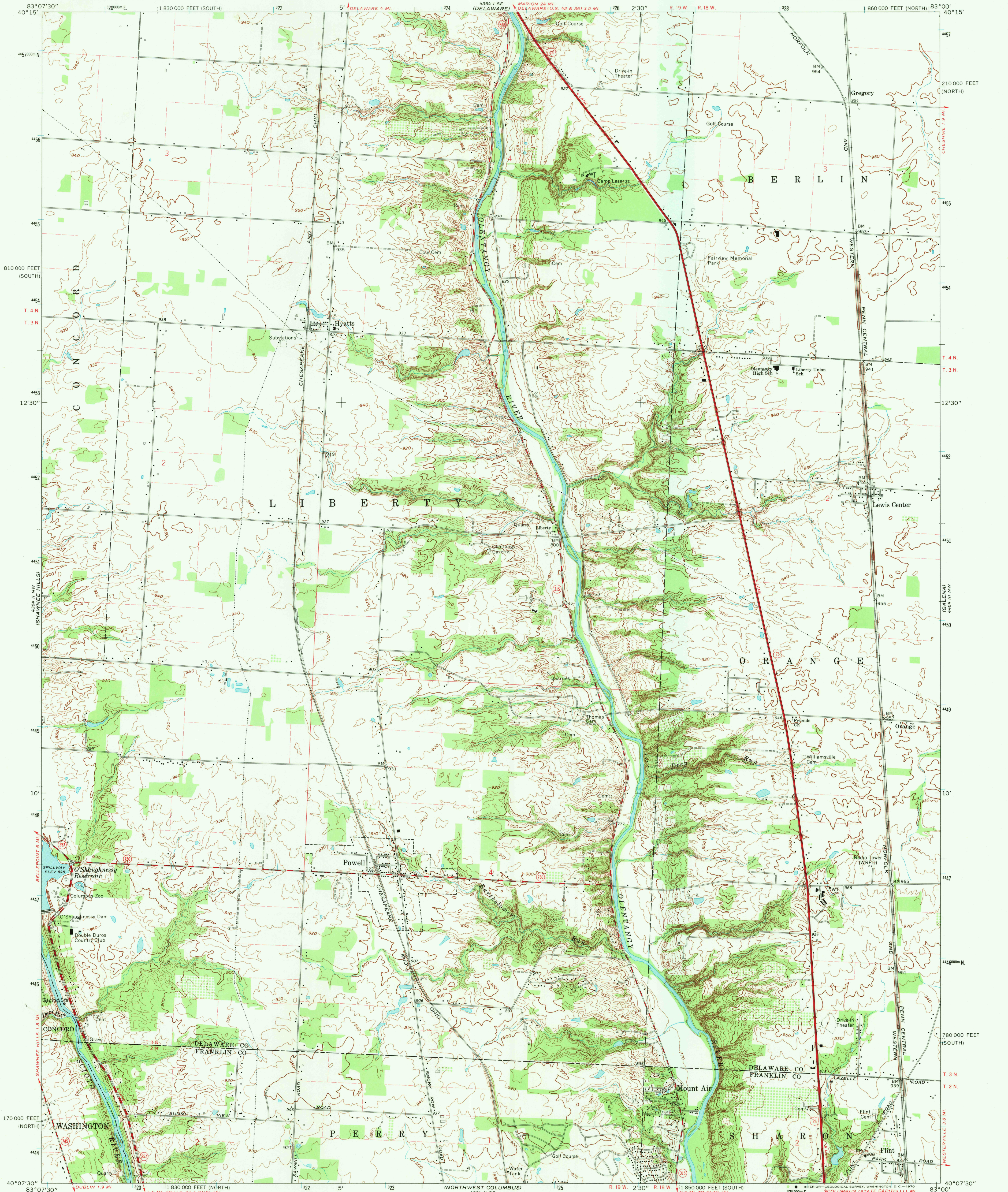
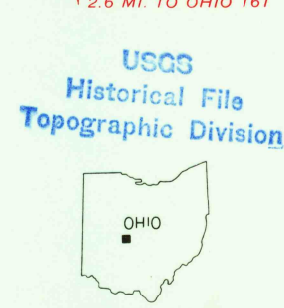
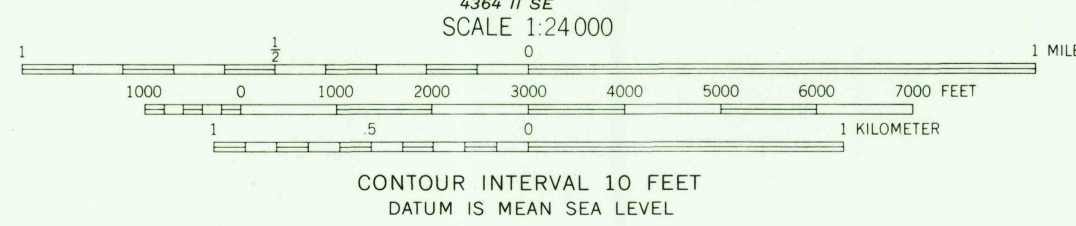
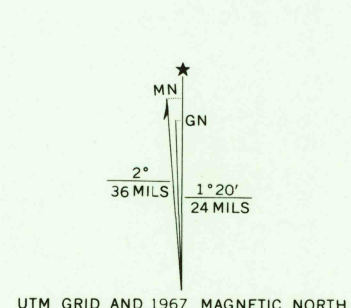


UNITED STATES
DEPARTMENT OF THE INTERIOR
GEOLOGICAL SURVEY

POWELL QUADRANGLE
OHIO
7.5 MINUTE SERIES (TOPOGRAPHIC)
NE/4 DUBLIN 15' QUADRANGLE



Maped, edited, and published by the Geological Survey
Revised in cooperation with State of Ohio agencies
Control by USGS and USC&GS
Topography by photogrammetric methods from aerial
photographs taken 1953 and planetable surveys 1955
Revised from aerial photographs taken 1966. Field checked 1967
Polyconic projection. 1927 North American datum
10,000-foot grids based on Ohio coordinate system,
north zone and south zone
1000-meter Universal Transverse Mercator grid ticks,
zone 17, shown in blue
Fine red dashed lines indicate selected fence and field lines where
generally visible on aerial photographs. This information is unchecked
Area west of the Scioto River lies within the Virginia Military District
Area east of the Scioto River lies within the United States Military District
Land lines based on the Base Line of the Military District



ROAD CLASSIFICATION
Primary highway, all weather, hard surface
Secondary highway, all weather, hard surface
Light-duty road, all weather, improved surface
Unimproved road, fair or dry weather
U. S. Route
State Route

THIS MAP COMPLIES WITH NATIONAL MAP ACCURACY STANDARDS
FOR SALE BY U. S. GEOLOGICAL SURVEY, WASHINGTON, D. C. 20242
A FOLDER DESCRIBING TOPOGRAPHIC MAPS AND SYMBOLS IS AVAILABLE ON REQUEST

U.S.G.S.
FILE COPY
TOPOGRAPHIC DIVISION

POWELL, OHIO
NE/4 DUBLIN 15' QUADRANGLE
N4007.5-W8300.7.5
1967
AMS 4364 II NE-SERIES V852

3325
AUG 4 1970